



ADMINISTRATIVE OFFICE
45 SOUTH FRUIT STREET
CONCORD, NH 03301-4857



GEORGE N. COPADIS, COMMISSIONER
RICHARD J. LAVERS, DEPUTY COMMISSIONER

FIS 22-079
Withdrawn By Agency

February 10, 2022

The Honorable Karen Umberger, Chairman
Fiscal Committee of the General Court
State House
Concord, NH 03301

Dear Chairman Umberger:

New Hampshire Employment Security (NHES) respectfully requests to withdraw item FIS 22-079 from the February 18, 2022 Fiscal Committee agenda.

Respectfully submitted,

George N. Copadis
Commissioner



STATE OF NEW HAMPSHIRE
 DEPARTMENT of NATURAL and CULTURAL RESOURCES
 STATE COUNCIL on the ARTS

19 Pillsbury Street CONCORD, NEW HAMPSHIRE 03301

February 8, 2022

The Honorable Karen Umberger, Chairman
 Fiscal Committee of the General Court
and
 His Excellency, Governor Christopher T. Sununu
 and the Honorable Executive Council
 State House
 Concord, New Hampshire 03301

REQUESTED ACTION

Pursuant to RSA 14:30-a, VI, the Department of Natural and Cultural Resources, NH State Council on the Arts, requests authorization to accept and expend American Rescue Plan Act (ARPA) funds in the amount of \$1,011,000 from the State of New Hampshire effective upon Fiscal Committee and Governor and Executive Council approvals through June 30, 2023. This is an allowable use of ARP FRF funds under Section 602 (c)(1)(A) to respond to the public health emergency or its negative economic impacts. 100% Federal Funds.

Funds are to be budgeted in the following account:

03-35-35-353510-24930000 - ARPA Grant DNCR Arts Council

Class-Account	Class Description	FY22 Current Adjusted Authorized	Requested Action	Revised FY22 Adjusted Authorized
000-400338	Federal Funds	(\$758,900)	(\$1,011,000)	(\$1,769,900)
	Total Revenue	(\$758,900)	(\$1,011,000)	(\$1,769,900)
040-500800	Indirect Costs	\$6,186	\$10,000	\$16,186
041-500801	Audit Fund Set Aside	\$760	\$1,000	\$1,760
050-500109	Personal Service Temp Appoi	\$39,994		\$39,994
060-500601	Benefits	\$3,060		\$3,060
072-500575	Grants Federal	\$708,900	\$1,000,000	\$1,708,900
	Total Expenses	\$758,900	\$1,011,000	\$1,769,900

The following appropriation authorities are being requested:

Class 040 – Indirect Costs - Appropriation for recovery of eligible administrative support expenses estimated as 1% of total.

Class 041 – Audit Fund set Aside - Appropriation to pay for required audit fees.

Class 072 – Grants – Federal - Appropriation needed to pay competitive subgrants to nonprofit and for-profit performing arts venues.

EXPLANATION

The Save Our Granite Stages (SOGS) Fund was created in the Arts Council’s budget by Chapter 91 of 2021 (HB2), Section 91:443, which amended RSA 19-A to add a new Section 15 creating the Fund. The Fund would make grants in FY2022 to nonprofit and for-profit New Hampshire performing arts venues that did **not** receive grants from the federal [Shuttered Venue Operators Grant](#) (SVOG) program, operated by the U.S. Small Business Administration. The language allows the state to direct to the Fund federal funds received by the state in response to the COVID-19 public health emergency. The fund is non-lapsing and sunsets at the end of Fiscal Year 2023.

The New Hampshire State Council on the Arts will create a competitive grant program for nonprofit and for-profit New Hampshire performing arts venues and/or performing arts production entities that did **not** receive grants from the federal SVOG program and are not majority-owned or controlled by a publicly traded corporation. “Performing arts venue” is defined as a nonprofit or for-profit facility that is **primarily** engaged in hosting live theatrical presentations or musical or other entertainment events that are seated, ticketed and open to the public, and “performing arts production entity,” is defined as “an entity that is **primarily** engaged in producing live theatrical presentations at a fixed New Hampshire venue that are seated, ticketed and open to the public”. The program will be open to New Hampshire venues seating 300 or fewer patrons meeting these criteria.

All direct program costs will be accounted for using activity 00FRF602PH3502A and all administrative and indirect costs will be accounted for using activity 00FRF602PH3502Z. Accounting classifications may be subject to technical changes at the discretion of the Department of Administrative Services’ Division of Accounting Services

Key program details:

Eligibility –Small performing arts venues and/or performing arts production entities that operate independently at fixed New Hampshire locations such as municipal or other public venues.

1. New Hampshire nonprofit and for-profit performing arts venues, which are defined as “facilities primarily engaged in hosting live theatrical presentations or musical or other entertainment events that are seated, ticketed, and open to the public,” and/or “performing arts production entities,” defined as “an entity that is primarily engaged in producing live theatrical presentations at a fixed New Hampshire venue that are seated, ticketed and open to the public.”
2. Venues must not be majority-owned or controlled by a publicly traded corporation.
3. Venues must not have received an award under the federal Shuttered Venue Operators Grant Program
4. Venues must have seating capacity of 300 or less (as considered by [SB132](#)).
5. Venues must be in good standing with NH Secretary of State.

Operation

1. Applicants would be able to apply through the State Council on the Arts for unrestricted operating support up to 70% of the eligible entity’s COVID-related revenue loss from March 3, 2021 – December 31, 2021, which is calculated by subtracting gross receipts between March 3, 2021, and December 31, 2021, from gross receipts between March 3, 2019, and December 31, 2019.

2. Award amounts would be adjusted to account for other COVID-related funding received by the entity for 2021 expenses or revenue losses, including:

- a. State of NH CARES Act CRF or American Rescue Plan Act (ARPA) funds (including funds administered by NH State Council on the Arts).
- b. County or municipal CARES Act CRF or ARPA funded awards.
- c. Federal Paycheck Protection Program (PPP) awards.
- d. Federal Economic Injury Disaster Loan (EIDL) or Advance.
- e. Other Federal CARES Act or ARPA programs entities may have received.
- f. Adjusted award amounts will be further subject to a pro rata share of the overall fund, to be determined based on all award recipients' gross receipts losses adjusted for COVID-19 assistance received from all sources, compared with the program allocation of \$1,000,000 and a cap of \$25,000 per entity (enabling up to 40 awards).

In the event Federal Funds become no longer available, General Funds will not be requested to support these expenditures.

Respectfully submitted,



A handwritten signature in black ink that reads "Sarah L. Stewart". The signature is written in a cursive style with a long horizontal line extending from the end of the name.

Sarah L. Stewart
Commissioner

State of New Hampshire
Department of Natural and Cultural Resources
New Hampshire State Council on the Arts

FISCAL SITUATION

**03-035-035-353510-24930000 Save Our Granite Stages
DNCR Arts Council**

FY 22 Current Adjusted Authorized	\$758,900
Requested Action	<u>\$1,011,000</u>
FY 22 Revised Adjusted Authorized	\$1,769,900



Lori A. Shibinette
Commissioner

STATE OF NEW HAMPSHIRE
DEPARTMENT OF HEALTH AND HUMAN SERVICES

OFFICE OF THE COMMISSIONER

129 PLEASANT STREET, CONCORD, NH 03301
603-271-9474 1-800-852-3345 Ext. 9474
Fax: 603-271-4230 TDD Access: 1-800-735-2964 www.dhhs.nh.gov

FEB 11 2022 3:26 PM
FIS 22 083

Late Item

February 10, 2022

The Honorable Karen Umberger, Chairman
Fiscal Committee of the General Court and

His Excellency, Governor Christopher T. Sununu
and the Honorable Council
State House
Concord, NH 03301

REQUESTED ACTION

1. Pursuant to the provisions of RSA 14:30-a, VI, authorize the Department of Health and Human Services, Office of the Commissioner, to accept and expend the American Rescue Plan Act (ARPA), in the amount of \$1,763,253 effective upon Fiscal Committee and Governor and Executive Council approval through June 30, 2023 and further authorize the allocation of these funds in the accounts below. These funds will be used for the purchase of Hampstead Hospital, a 111-bed licensed and accredited hospital in Hampstead, New Hampshire to improve the State's ability to provide inpatient psychiatric, behavioral and substance use services. This is an allowable use of ARP FRF funds under Section 602 (c)(1)(A) to respond to the public health emergency or its negative economic impacts.¹
2. Contingent upon approval of Requested Action #1, pursuant to RSA 124:15, authorize the Department of Health and Human Services to establish 6 full-time, non-classified positions effective upon Fiscal Committee and Governor and Executive Council approval through June 30, 2023.

¹ All direct program costs will be accounted for using activity 00FRF602PH9507A and all administrative and indirect costs will be accounted for using activity 00FRF602PH9507Z. Accounting classifications may be subject to technical changes at the discretion of the Department of Administrative Services' Division of Accounting Services.

05-95-95-957510-24380000 HEALTH AND SOCIAL SERVICES, DEPT OF HEALTH AND HUMAN SVCS, HAMPSTEAD HOSPITAL, HAMPSTEAD PURCHASE

Class/Object	Class Title	Current Authorized Budget	Requested Change	Adjusted Budget
Revenue				
000-400338	Federal Funds	\$ 15,117,252	\$ 1,763,253	\$ 16,880,505
	Total Revenue:	\$ 15,117,252	\$ 1,763,253	\$ 16,880,505
Expense				
016-500141	Salary Non Class Employees	\$ -	\$ 765,154	\$ 765,154
027-582703	Transfers to DoIT	\$ -	\$ 200,000	\$ 200,000
033-500150	Land Acquisitions and Easement	\$ 13,000,000	\$ 20,000	\$ 13,020,000
033-500150	Land Acquisitions and Easement	\$ 2,000,000	\$ -	\$ 2,000,000
041-500801	Audit Set Aside	\$ 15,102	\$ 1,762.00	\$ 16,864
060-500612	Benefits	\$ -	\$ 366,337	\$ 366,337
085-588514	Inter-Agency Transfers out of Federal Funds	\$ 73,900	\$ -	\$ 73,900
085-588520	Inter-Agency Transfers out of Federal Funds	\$ -	\$ 300,000	\$ 300,000
103-502507	Contracts for Operational Services	\$ 28,250	\$ 110,000	\$ 138,250
	Total Expense:	\$ 15,117,252	\$ 1,763,253	\$ 16,880,505

EXPLANATION

Hampstead Hospital has served an important role as New Hampshire has adapted its behavioral health system to meet population needs across the lifespan. This includes moving pediatric services outside of the New Hampshire Hospital campus to ensure appropriate focus on child-specific treatment needs while allowing more treatment and space options for transitional and supported housing for New Hampshire Hospital’s adult patients. Through its contract with DHHS, Hampstead Hospital has been an important partner in addressing the needs of children.

This item is to budget additional costs that had not been calculated as of the submittal of the initial purchase document. The change includes the purchase of title insurance, the initial costs for the electronic medical record system, the legal fees incurred by the Attorney General’s Office, conducting a condition analysis of the building as well as other miscellaneous inspections and the standing up of non-classified positions as a temporary solution until unclassified positions are created by the legislature.

Funds will be budgeted as follows:

Class 016-500141 Salary Non Class Employees

The following positions are being budgeted, based on the maximum of an expected unclassified pay level. This is for 12 months of expenditures, as it is expected that some of these positions will be hired prior to acquisition completion, and that the unclassified position establishment will take several months into FY23.

The Honorable Ken Weyler, Chairman
Fiscal Committee of the General Court

His Excellency, Governor Christopher T. Sununu
and the Honorable Council

Page 3

Chief Executive Officer	PP (\$165,282.00)
Chief Operations Officer	HH (119,184.00)
Chief Financial Officer	II (\$126,048.00)
Compliance Officer	HH(\$119,184.00)
General Counsel	II (\$126,048.00)
Contract Manager	GG(\$109,408.00)

Class 027-582703 Transfers to DoIT

These funds will be used for the initial costs to have Hampstead use the same Electronic Health Record (EHR) as New Hampshire Hospital. This is necessary to ensure the billing functions are transferable skills between NHH and Hampstead Hospital.

Class 041-500801 Audit Set Aside

As required by Department of Administrative Services

Class 060-500612, Benefits

Benefits for the positions budgeted in class 016.

Class 085-588520, Inter-Agency Transfers out of Federal Funds

These funds will be used to pay for contracted costs incurred by the Department of Justice.

Class 103-502507, Contracts for Operational Services

An inspection of the building is required, called a 'Facility Assessment.' This assessment will include a team of design professionals visiting the building to assess the structure, envelope, MEP systems, site, etc. The result will be a report compiling all their gathered data on existing conditions and the buildings' suitability for the continued use. The estimated cost for this assessment is up to \$100,000. There are additional miscellaneous inspections that are expected to be conducted, like a septic inspection.

This item does not include any funding for operating the facility. A separate item will be presented for the operating budget. In order to design an effective and appropriate operating budget for the facility, the Department is actively reviewing financial reports, Medicare Cost Reports, contract needs, and general operating requirements. As the facility was not state-run previously, there are many implications relative to state finance and procurement law that must be considered, and as such the Department is working diligently to resolve these questions and be able to bring forth an operating budget for the facility.

The Honorable Karen Umberger, Chairman
Fiscal Committee of the General Court

His Excellency, Governor Christopher T. Sununu
and the Honorable Council
Page 4

The following information is provided in accordance with the Comptroller's instructional memorandum dated September 21, 1981.

1) List of personnel involved:

Chief Executive Officer, Chief Operations Officer, Chief Financial Officer, Compliance Officer, General Counsel, Contract Manager

2) Nature, Need, and Duration:

The positions are being budgeted, based on the maximum of an expected unclassified pay level. This is for 12 months of expenditures, as it is expected that some of these positions will be hired prior to acquisition completion, and that the unclassified position establishment will take several months into FY23.

3) Relationship to existing agency programs:

These leadership positions will work in partnership with Hampstead Hospital leadership (executed by a third party vendor) for determining strategic direction and oversight of day-to-day operations of the Hospital, a similar model used at New Hampshire Hospital.

4) Has a similar program been requested of the legislature and denied?

No. However, SB 430 requests establishment of new positions at Hampstead Hospital for inpatient treatment of children's behavioral health.

5) Why wasn't funding included in the agency's budget request?

The opportunity to purchase Hampstead Hospital happened after the budget was completed.

6) Can portions of the grant funds be utilized?

This request is for ARPA funds.

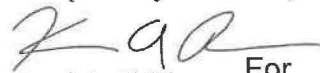
7) Estimate the funds required to continue this position(s):

The operating budget is still be constructed.

Area served: Statewide

Source of funds: These funds are 100% Federal

Respectfully submitted,


Lori A. Shibinette For
Commissioner



Lori A. Shibinette
Commissioner

FIS 22 084

MAC

Late Item

**STATE OF NEW HAMPSHIRE
DEPARTMENT OF HEALTH AND HUMAN SERVICES
OFFICE OF THE COMMISSIONER**

129 PLEASANT STREET, CONCORD, NH 03301
603-271-9474 1-800-852-3345 Ext. 9474
Fax: 603-271-4230 TDD Access: 1-800-735-2964 www.dhhs.nh.gov

February 2, 2022

The Honorable Karen Umberger, Chairman
Fiscal Committee of the General Court and

His Excellency, Governor Christopher T. Sununu
and the Honorable Council
State House
Concord, NH 03301

REQUESTED ACTION

Pursuant to the provisions of RSA 14:30-a, VI, authorize the Department of Health and Human Services, Office of the Commissioner, to accept and expend federal funds from the American Rescue Plan Act (ARPA), in the amount of \$300,300 effective upon Fiscal Committee and Governor and Executive Council approval through June 30, 2023 and further authorize the allocation of these funds in the account below. These funds will be used for the Department to provide a wage enhancement for Licensed Nursing Assistants (LNAs) at Glencliff Home (GH). This is an allowable use of ARP FRF funds under Section 602 (c)(1)(A) to respond to the public health emergency or its negative economic impacts. 100% Federal Funds.

05-095-940010-24650000¹ HEALTH AND SOCIAL SERVICES, DEPT OF HEALTH AND HUMAN SERVICES, HHS: NEW HAMPSHIRE HOSPITAL, NEW HAMPSHIRE HOSPITAL, ARPA DHHS FISCAL RECOVERY FUNDS

Class/Obj	Class Title	Current Modified Budget	Increase (Decrease) Amount	Revised Modified Budget
000-400338	Federal Funds	\$73,522,293.	\$300,300	\$73,822,593
	General Funds			
	Total Revenue			
010-500100	Personal Services	\$0	\$245,500	\$245,500
020-500200	Current Expense	\$1	\$0	\$1
030-500301	Equipment New/Replacement	\$1	\$0	\$1
040-500800	Indirect Costs	\$2,121,473	\$0	\$2,121,473
041-500801	Audit Fund Set Aside	\$52,181	\$300	\$52,481
042-500620	Additional Fringe Benefits	\$8,733	\$0	\$8,733
046-500462	Consultants	\$1	\$0	\$1
047-500240	Own Forces Maintenance (Bldg-Grnds)	\$1	\$0	\$1
048-500226	Contract Repairs;Bldg. Grounds	\$1	\$0	\$1

¹ All direct program costs will be accounted for using activity 00FRF602PH9520A and all administrative and indirect costs will be accounted for using activity 00FRF602PH9520Z. Accounting classifications may be subject to technical changes at the discretion of the Department of Administrative Services' Division of Accounting Services.

The Honorable Karen Umberger, Chairman
Fiscal Committee of the General Court

His Excellency, Governor Christopher T. Sununu
and the Honorable Council

Page 2

059-500117	Temp Full Time	\$98,792	\$0	\$98,792
060-500601	Benefits	\$126,251	\$54,500	
102-500731	Contracts for Program Services	\$59,343,634	\$0	
103-502507	Contracts for Operational Svcs	\$11,771,224	\$0	
	Total Expenses	\$73,522,293	\$300,300	\$73,822,593

EXPLANATION

Throughout the COVID-19 pandemic, Long-term care facilities have struggled to maintain appropriate levels of staffing to care for their patients, and in recent months, with funding provided by the State of New Hampshire, new wage and benefit programs are being renewed and offered by a variety of long-term care facilities in the state of New Hampshire. Glencliff Home has lost numerous staff to these programs. Glencliff Home's LNA vacancy rate is 18% for funded positions (40% for authorized positions) causing the Department to invest heavily in high-cost travel-Nurse and travel-LNA contracts to maintain safe and effective operations, but this is not a sustainable model. Furthermore, the Department is concerned additional vacancies may occur as staff pursue employment at facilities initiating similar benefit programs to the one being proposed. Even a small change in staffing at Glencliff Home could result in a significant impact in operations, and will likely result in the facility further reducing census to ensure appropriate and safe care standards are maintained.

The funds are to be budgeted as follows:

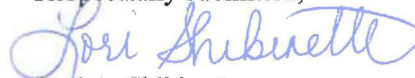
- Class 010 – The funds will be used to provide a 16-week enhancement for LNAs at GH.
- Class 041 - The funds will be used to pay for audit fund set aside per State requirement.
- Class 060 - The funds will be used to cover payroll taxes associated with the overtime incurred.

Area served: Statewide

Source of funds: These funds are 100% Federal.

In the event that Federal Funds become no longer available, General Funds will not be requested to support this program.

Respectfully submitted,



Lori A. Shibinette
Commissioner



Lori A. Shibinette
Commissioner

Kerrin A. Rounds
Chief Financial Officer

STATE OF NEW HAMPSHIRE
DEPARTMENT OF HEALTH AND HUMAN SERVICES
FINANCIAL SERVICES

129 PLEASANT STREET, CONCORD, NH 03301-3857
603-271-9546 1-800-852-3345 Ext. 9546
TDD Access: 1-800-735-2964 www.dhhs.nh.gov

FIS 22 085
Late Item

mar

February 11, 2022

The Honorable Karen Umberger, Chairman
Fiscal Committee of the General Court
State House
Concord, NH 03301

Re: INFORMATIONAL ITEM: Health and Human Services Statistics SFY22

Informational Item

The Department of Health and Human Services (DHHS) hereby submits as an information item that includes the Department's caseload information through December 31, 2021 (SFY 21).

The current projected FY22 Lapse is \$20,000,000 of general fund expenditure lapse. This lapse may be reduced to satisfy budget reduction requirements for the salary and benefits reductions. Revenue lapses are not able to be estimated at this time. The Department is in process of trying to implement software to better estimate revenue lapse and we hope to have it in place for the FY 24/25 biennium. We anticipate at least one more department wide transfer before 6/30/22. I don't expect the transfer to impact the current lapse estimate.

DEPARTMENT OF HEALTH AND HUMAN SERVICES



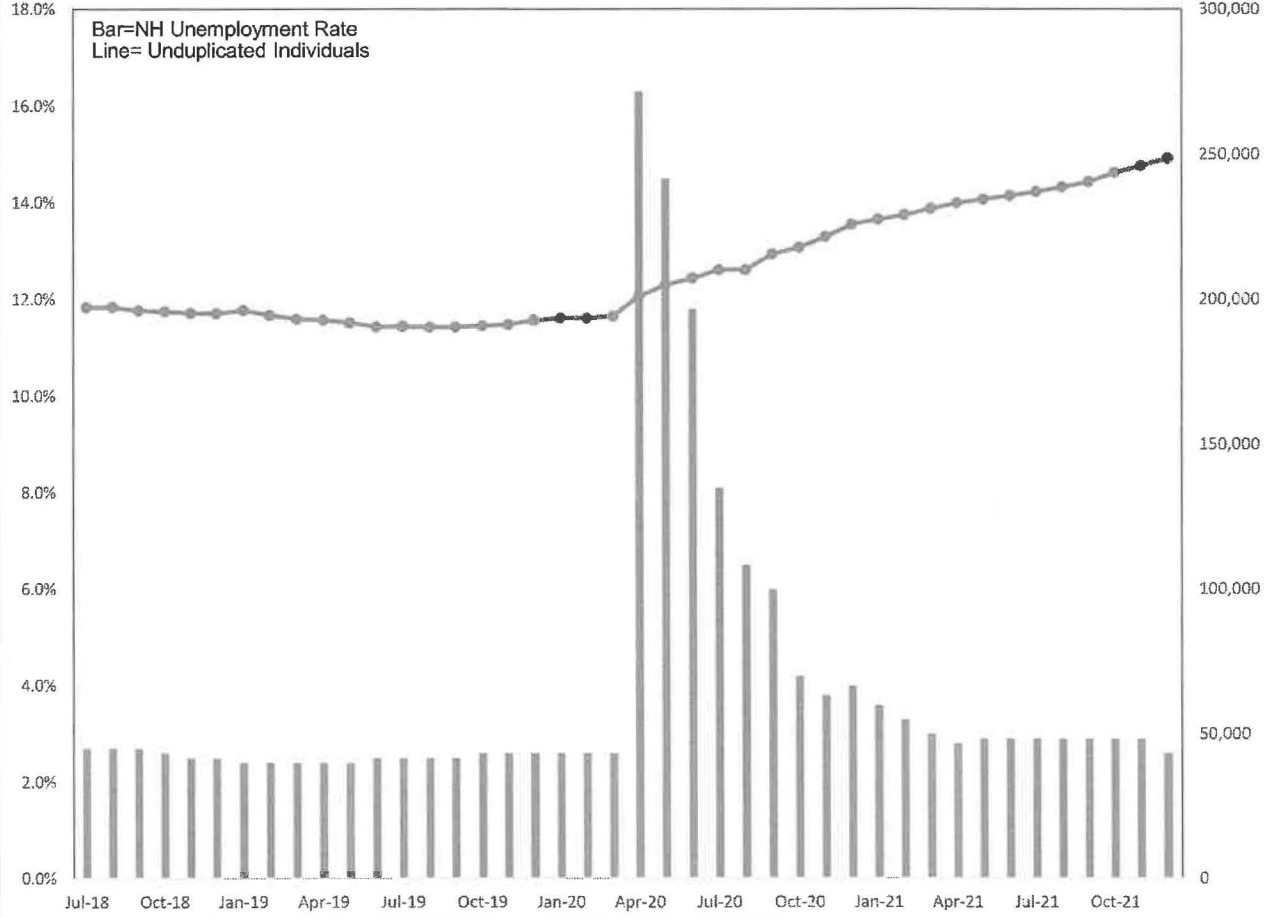
OPERATING STATISTICS DASHBOARD

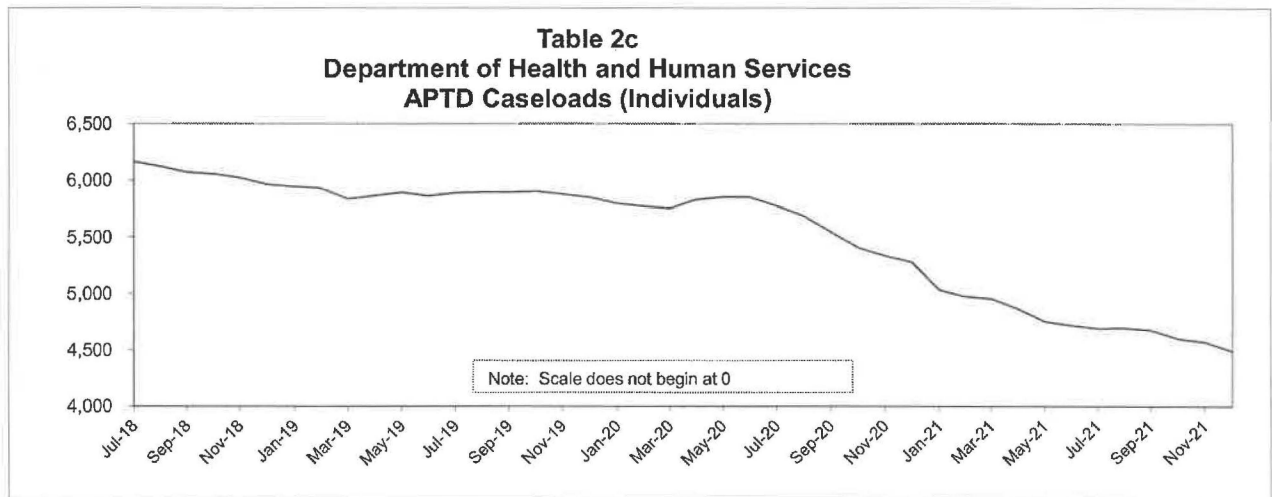
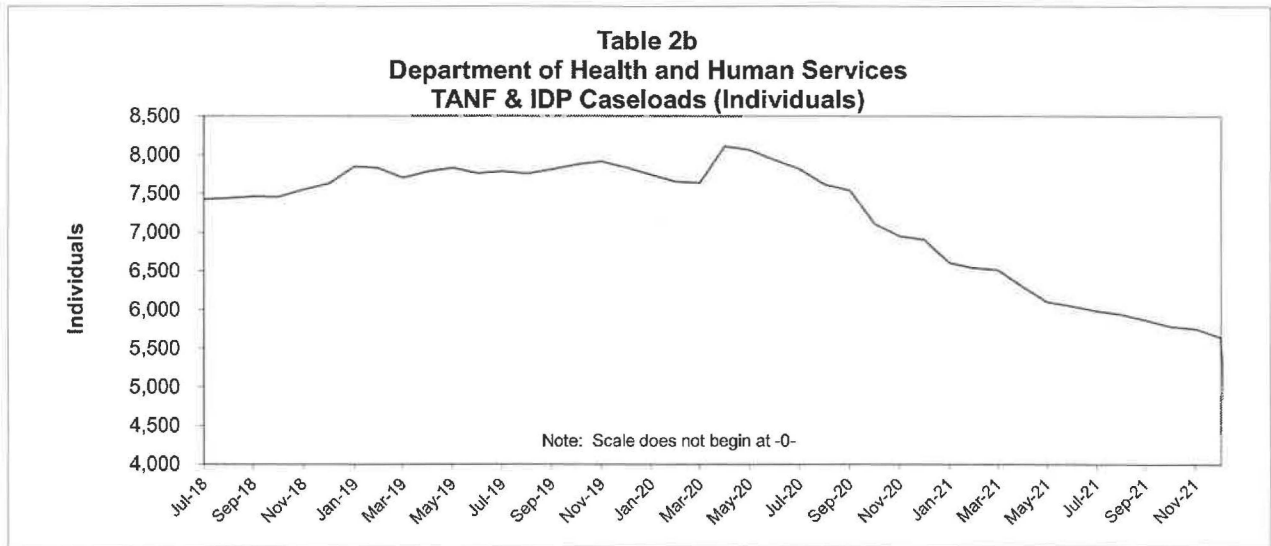
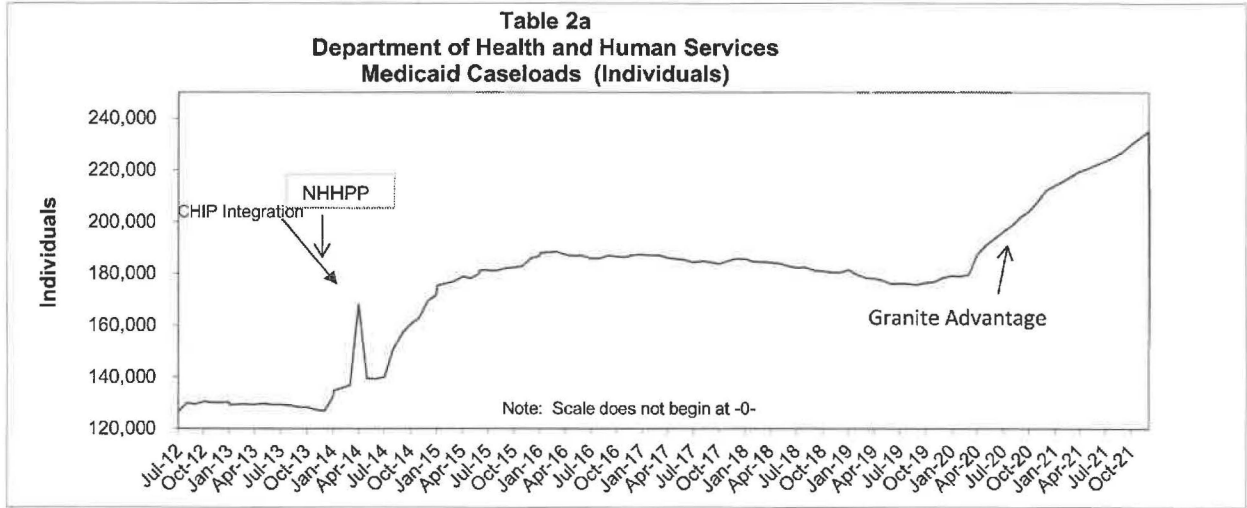
Fiscal Meeting February 2022

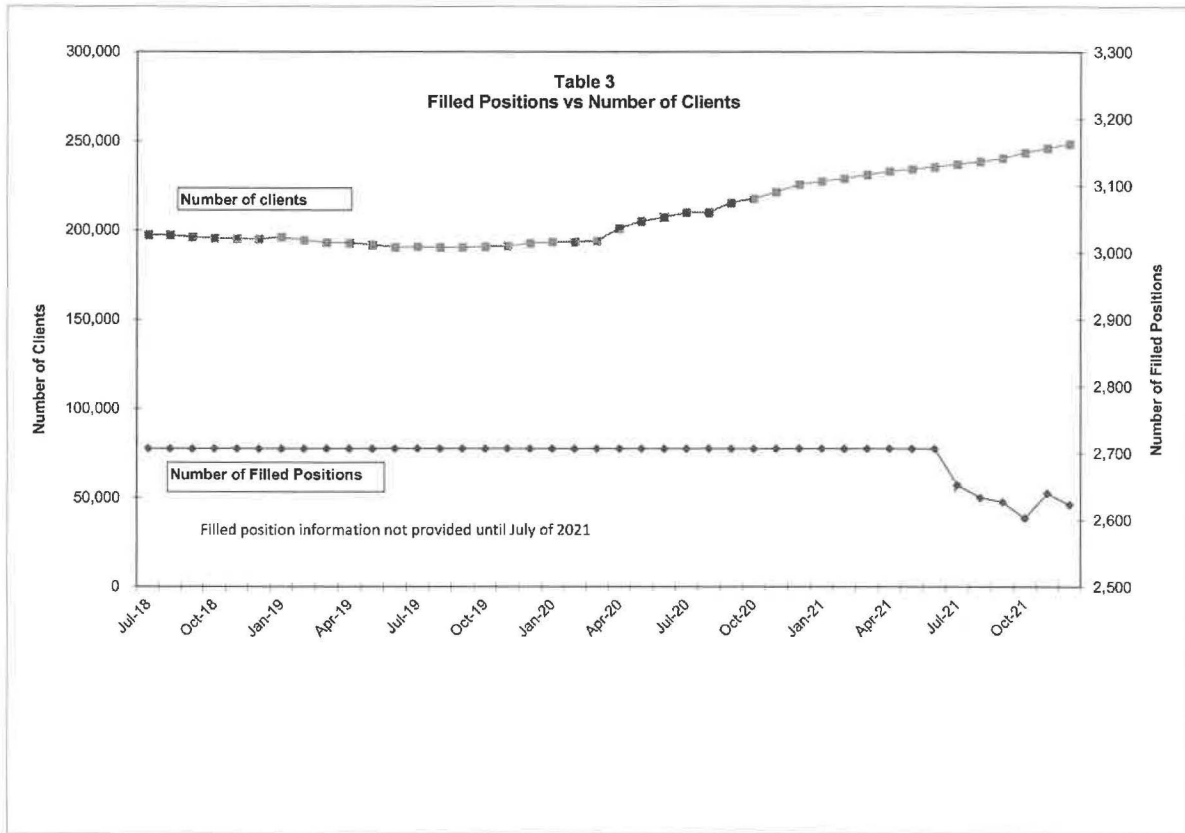
SFY22

Data/Caseloads as of 12/31/21
Except for SUD as of 10/31/21

TABLE 1
Department of Health and Human Services
Caseload vs Unemployment Rate







	A	B	C	D	E	F	G
1	Table 4						
2	Department of Health and Human Services						
3	Operating Statistics						
4	Children In Services						
5							
6		DCYF	DCYF	Family Foster	Residential	Child Care	Child Care
7		Referrals	Assessments	Care	Placement	Employment	Wait List
8			Closed	Placement	Placement	Related	Wait List
9		Actual	Actual	Actual	Actual	Actual	Actual
118	Jul-18	1,289	935	1,080	369	5,334	0
119	Aug-18	1,362	1,133	1,098	361	5,218	0
120	Sep-18	1,513	685	1,043	337	5,176	0
121	Oct-18	1,757	810	1,064	355	5,007	0
122	Nov-18	1,472	732	1,037	371	4,769	0
123	Dec-18	1,406	800	1,036	370	4,770	0
124	Jan-19	1,618	813	1,021	371	4,832	0
125	Feb-19	1,371	883	995	372	4,838	0
126	Mar-19	1,543	998	1,014	382	4,897	0
127	Apr-19	1,586	1,133	995	388	4,910	0
128	May-19	1,816	829	993	388	4,816	0
129	Jun-19	1,398	798	979	387	4,858	0
130	Jul-19	1,232	1,046	977	372	4,744	0
131	Aug-19	1,205	821	955	375	4,604	0
132	Sep-19	1,637	734	939	358	4,648	0
133	Oct-19	1,734	930	934	357	4,440	0
134	Nov-19	1,517	818	949	356	4,209	0
135	Dec-19	1,343	903	969	354	4,270	0
136	Jan-20	1,719	1,113	942	359	4,184	0
137	Feb-20	1,347	1,123	937	366	4,217	0
138	Mar-20	1,301	1,368	950	371	4,361	0
139	Apr-20	1,021	1,240	934	351	4,255	0
140	May-20	1,219	705	924	337	4,217	0
141	Jun-20	1,254	705	937	337	4,357	0
142	Jul-20	1,311	695	919	328	4,020	0
143	Aug-20	1,215	636	923	327	3,663	0
144	Sep-20	1,453	693	923	322	3,618	0
145	Oct-20	1,517	748	934	317	3,462	0
146	Nov-20	1,370	640	915	308	3,314	0
147	Dec-20	1,280	767	909	303	3,291	0
148	Jan-21	1,502	716	582	291	3,303	0
149	Feb-21	1,298	720	887	301	3,184	0
150	Mar-21	1,747	917	899	306	3,281	0
151	Apr-21	1,554	885	919	301	3,226	0
152	May-21	1,616	863	897	301	3,252	0
153	Jun-21	1,489	1,036			3,308	0
154	Jul-21	1,406	905	812	286	3,439	0
155	Aug-21	1,406	905	791	290	3,403	0
156	Sep-21	1,670	699	783	286	3,447	0
157	Oct-21	1,651	768	804	285	3,229	0
158	Nov-21	1,597	762	811	291	3,085	0
159	Dec-21	1,469	846	854	289	3,011	0
166							
167	ANNUAL AVERAGE						
168	SFY11	1,140	743	630	415	4,833	1,178
169	SFY12	1,189	771	596	322	5,043	0
170	SFY13	1,177	745	606	321	5,180	0
171	SFY14	1,200	719	551	309	5,450	0
172	SFY15	1,261	764	537	310	5,479	0
173	SFY16	1,235	968	641	327	5,658	0
174	SFY17	1,322	815	847	342	5,070	0
175	SFY18	1,501	936	1,052	365	5,066	0
176	SFY19	1,511	879	1,030	371	4,952	0
177	SFY20	1,377	959	946	358	4,376	0
178	SFY21	1,446	776	882	310	3,410	0
179	SFY22-YTD	1,533	814	809	288	3,269	0
180	Source of Data						
181	Column						
182	B	DCYF SFY Management Database Report: Bridges.					
183	C	DCYF Assessment Supervisory Report: Bridges.					
184	D	Bridges placement authorizations during the month, unduplicated.					
185	E	Bridges placement authorizations during the month, unduplicated.					
186	F	Bridges Expenditure Report, NHB-OAR8-128					
187	G	Child Care Wait List Screen: New Heights					
188	H	Bridges Service Day Query - Bed days divided by days in month					

Table 5
Department of Health and Human Services
Operating Statistics
DCYF- CHILD PROTECTION SOCIAL WORKERS - STAFFING UPDATE

ASSESSMENT WORKERS						FAMILY SERVICE WORKERS					INTAKE WORKERS				
SFY 20	Positions/ Authorized	Staff with Cases	CORE training	FMLA	Vacant/ Transition	Positions/ Authorized	Staff with Cases	CORE training	FMLA	Vacant/ transition	Positions/ Authorized	Staff with Cases	CORE training	FMLA	Vacant/ Transition
Jul-19	141	85	21	6	29	116	85	4	3	24	13	13	0	0	0
Aug-19	141	87	22	4	28	116	88	3	0	25	13	13	0	0	0
Sep-19	141	83	28	3	27	116	83	6	1	26	13	13	0	0	0
Oct-19	141	81	34	0	26	116	78	16	2	20	13	13	0	0	0
Nov-19	141	86	31	1	23	116	77	17	1	21	13	13	0	0	0
Dec-19	141	93	23	1	24	116	75	19	1	21	13	13	0	0	0
Jan-20	141	93	23	1	24	116	75	21	3	17	13	13	0	0	0
Feb-20	141	89	25	2	25	116	78	24	2	12	13	13	0	0	0
Mar-20	141	87	33	1	20	116	80	27	0	9	13	12	0	0	1
Apr-20	141	85	33	3	20	116	80	24	1	11	13	11	0	1	1
May-20	141	91	29	4	17	116	87	20	1	8	13	13	0	0	0
Jun-20	141	93	32	5	11	116	85	20	2	9	13	13	0	0	0
SFY 21	Positions/ Authorized	Staff with Cases	CORE training	FMLA	Vacant/ Transition	Positions/ Authorized	Staff with Cases	CORE training	FMLA	Vacant/ transition	Positions/ Authorized	Staff with Cases	CORE training	FMLA	Vacant/ Transition
Jul-20	162	101	30	3	28	122	86	21	1	14	13	13	0	0	0
Aug-20	162	95	34	3	30	122	83	18	2	19	13	13	0	0	0
Sep-20	162	100	27	3	32	122	82	22	3	15	13	12	0	0	1
Oct-20	162	100	30	2	30	122	82	18	3	19	13	11	0	0	2
Nov-20	162	100	31	1	30	122	78	18	1	25	13	12	0	0	1
Dec-20	162	111	21	1	29	122	85	13	2	22	13	13	0	0	0
Jan-21	162	111	24	1	26	122	84	15	4	19	13	13	0	0	0
Feb-21	162	110	22	3	27	122	85	17	3	17	13	13	0	0	0
Mar-21	161	111	26	3	21	122	85	18	4	15	14	12	1	0	1
Apr-21	161	107	26	5	23	122	84	17	3	18	14	12	1	0	1
May-21	161	135	31	6	26	122	110	16	4	12	14	12	1	0	1
Jun-21															
SFY 22	Positions/ Authorized	Staff with Cases	CORE training	FMLA	Vacant/ Transition	Positions/ Authorized	Staff with Cases	CORE training	FMLA	Vacant/ transition	Positions/ Authorized	Staff with Cases	CORE training	FMLA	Vacant/ Transition
Jul-21															
Aug-21	161	134	22	1	27	122	111	17	3	11	14	14	0	0	0
Sep-21	161	137	26	2	24	122	109	16	2	13	14	14	0	0	0
Oct-21															
Nov-21															
Dec-21															

Note: the newly authorized positions (20) budgeted in SFY18 are reflected in the counts above as authorized and vacant as they are currently being established & activated by DOP (July and August)

Note: Assessment workers include statewide assessment team workers, but does not include SIU; Family service workers are all workers that carry a caseload, it does not include Resource workers.

TABLE 6
Department of Health and Human Services
Operating Statistics
DCYF- Sununu Youth Services Center Census

SFY 19	Average Daily Census	ADC Committed Youth	ADC Detained Youth	Admissions
Jul-18	36	29	7	12
Aug-18	33	29	4	8
Sep-18	31	25	6	15
Oct-18	28	22	6	13
Nov-18	24	21	3	13
Dec-18	25	20	5	7
Jan-19	24	20	4	13
Feb-19	24	19	5	14
Mar-19	27	18	9	17
Apr-19	25	17	8	13
May-19	23	17	6	11
Jun-19	22	17	5	9

SFY 20	Average Daily Census	ADC Committed Youth	ADC Detained Youth	Admissions
Jul-19	20	16	4	8
Aug-19	16	13	3	7
Sep-19	14	10	4	15
Oct-19	14	10	4	7
Nov-19	13	8	5	8
Dec-19	13	7	6	6
Jan-20	21	11	10	19
Feb-20	23	11	12	13
Mar-20	20	10	10	4
Apr-20	16	9	7	8
May-20	18	10	8	5
Jun-20	17	10	7	6

SFY 21	Average Daily Census	ADC Committed Youth	ADC Detained Youth	Admissions
Jul-20	12	6	6	9
Aug-20	14	6	8	12
Sep-20	14	7	7	8
Oct-20	11	5	6	3
Nov-20	11	6	5	6
Dec-20	10	5	5	6
Jan-21	9	5	4	9
Feb-21	13	6	7	12
Mar-21	16	6	10	18
Apr-21	14	5	8	7
May-21	12	5	7	5
Jun-21				

SFY 22	Average Daily Census	ADC Committed Youth	ADC Detained Youth	Admissions
Jul-21	11	4	7	
Aug-21	12	4	8	5
Sep-21	13	7	6	11
Oct-21	11	7	4	4
Nov-21	12	10	2	11
Dec-21	13	9	4	10

"ADC" = Average Daily Census

	A	B	C	D	E	F	G	H	I	J	K	L
1	Table 7											
2	Department of Health and Human Services											
3	Operating Statistics											
4	Social Services											
5												
6						Child Support Cases						
7		TANF & Interim Disabled Parents	APTD Persons	SNAP Persons	Current Cases	Former Cases	Never Cases	Total Cases				
8		Actual	Actual	Actual	Actual	Actual	Actual	Actual				
9		Actual	Actual	Actual	Actual	Actual	Actual	Actual				
118	Jul-18	7,425	6,163	84,338	4,608	16,835	16,380	37,823				
119	Aug-18	7,440	6,121	83,632	4,556	16,849	16,462	37,867				
120	Sep-18	7,461	6,070	82,277	4,677	16,674	16,402	37,753				
121	Oct-18	7,454	6,057	79,947	4,591	16,718	16,402	37,711				
122	Nov-18	7,551	6,022	79,319				0		Not Available, system change		
123	Dec-18	7,630	5,963	78,169	4,589	15,374	17,727	37,690				
124	Jan-19	7,849	5,941	78,683				0				
125	Feb-19	7,831	5,931	77,613	4,675	15,291	17,782	37,748				
126	Mar-19	7,705	5,835	76,805	4,822	15,162	17,911	37,895				
127	Apr-19	7,785	5,865	76,197	4,768	15,162	17,963	37,893				
128	May-19	7,834	5,891	75,478	4,804	15,096	17,953	37,853				
129	Jun-19	7,761	5,860	74,440	4,861	15,014	17,978	37,853				
130	Jul-19	7,788	5,889	73,970	4,717	15,078	17,865	37,660				
131	Aug-19	7,758	5,895	73,959	4,819	14,893	17,738	37,450				
132	Sep-19	7,812	5,893	73,673	4,698	14,922	17,462	37,082				
133	Oct-19	7,878	5,902	73,666	4,775	14,821	17,294	36,890				
134	Nov-19	7,912	5,878	73,084	4,855	14,665	17,186	36,706				
135	Dec-19	7,836	5,850	72,635	4,679	14,596	16,924	36,199				
136	Jan-20	7,742	5,794	72,466	4,651	14,479	16,780	35,910				
137	Feb-20	7,653	5,772	72,096	4,657	14,404	16,696	35,757				
138	Mar-20	7,635	5,753	72,139	4,618	14,409	16,610	35,637				
139	Apr-20	8,107	5,828	77,455	4,808	14,095	16,454	35,357				
140	May-20	8,063	5,852	77,965	4,820	13,943	16,305	35,068				
141	Jun-20	7,937	5,852	72,263	4,669	13,915	16,161	34,745				
142	Jul-20	7,814	5,771	69,898	4,601	13,869	16,048	34,518				
143	Aug-20	7,612	5,686	69,700	4,492	13,768	15,923	34,183				
144	Sep-20	7,542	5,543	69,992	4,392	13,722	15,753	33,867				
145	Oct-20	7,106	5,407	70,292	4,341	13,714	15,712	33,767				
146	Nov-20	6,951	5,337	70,109	4,219	13,748	15,608	33,575				
147	Dec-20	6,906	5,277	70,222	4,074	13,779	15,515	33,368				
148	Jan-21	6,605	5,032	68,883	4,083	13,705	15,494	33,282				
149	Feb-21	6,543	4,975	68,595	4,037	13,692	15,445	33,174				
150	Mar-21	6,511	4,953	69,748	3,945	13,703	15,387	33,035				
151	Apr-21	6,300	4,863	69,005	3,868	13,652	15,345	32,865				
152	May-21	6,100	4,750	68,912	3,854	13,555	15,310	32,719				
153	Jun-21	6,046	4,719	68,482	3,731	13,491	15,217	32,439				
154	Jul-21	5,983	4,692	68,250	3,806	13,351	15,157	32,314				
155	Aug-21	5,938	4,696	68,213	3,715	13,320	15,040	32,075				
156	Sep-21	5,870	4,678	68,713	3,632	13,264	14,912	31,808				
157	Oct-21	5,780	4,600	68,852	3,642	13,161	14,814	31,617				
158	Nov-21	5,752	4,570	68,903	3,506	13,181	14,697	31,384				
159	Dec-21	5,646	4,493	68,581	3,541	13,043	14,607	31,191				
167	ANNUAL AVERAGES											
168	SFY11	13,696	8,794	112,302	5,581	17,264	13,006	35,850				
169	SFY12	10,870	8,774	115,987	4,951	17,416	12,823	35,190				
170	SFY13	8,494	8,136	117,899	4,086	17,677	12,942	34,705				
171	SFY14	7,449	7,835	113,331	3,821	17,765	13,342	34,927				
172	SFY15	6,582	7,603	107,685	3,780	18,700	13,939	36,419				
173	SFY16	5,481	7,166	100,500	3,693	19,268	15,443	38,404				
174	SFY17	4,996	6,752	93,907	3,648	18,823	16,166	38,637				
175	SFY18	6,580	6,366	88,384	4,299	17,384	16,222	37,905				
176	SFY19	7,644	5,977	78,908	4,695	15,818	17,296	31,507				
177	SFY20	7,843	5,847	73,781	4,731	14,518	16,956	36,205				
178	SFY21	6,836	5,193	69,487	4,136	13,700	15,563	33,399				
179	SFY22	5,828	4,622	68,585	3,640	13,220	14,871	15,866				
181	Source of Data											
182	Column											
183	B	Reporting & Analysis Services, Caseload Statistics										
184	C	Reporting & Analysis Services, Caseload Statistics										
185	D	Reporting & Analysis Services, Caseload Statistics										
186	E-H	DCSS Caseload (Month End Actual from NECSES)										
187												
188	Note	* Effective 3/1/12, SSI or SSP is considered when determining FANF eligibility. Those child support cases no longer eligible, are now "Former" assistance cases.										
189												
190												
191												

	A	B	C	D	E
1	Table 8				
2	Department of Health and Human Services				
3	Operating Statistics				
4	Clients Served by Community Mental Health Centers				
5					
6		Annual Totals			
7		Adults	Children	Total	
8	FY2012	36,407	13,122	49,529	
9	FY2013	34,819	13,013	47,832	
10	FY2014	35,657	14,202	49,859	
11	FY2015	34,725	10,736	45,461	
12	FY2016	32,600	11,699	44,299	
13	FY2017	30,597	11,432	42,029	
14	FY2018	31,171	12,088	43,259	
15	FY2019	32,153	12,351	44,504	
16	FY2020	32,455	12,405	44,860	
67	Jul-18	14,811	6,453	21,264	
68	Aug-18	15,363	6,497	21,860	
69	Sep-18	14,999	6,503	21,502	
70	Oct-18	15,673	6,719	22,392	
71	Nov-18	14,661	6,611	21,272	
72	Dec-18	14,595	6,733	21,328	
73	Jan-19	15,670	7,052	22,722	
74	Feb-19	15,028	6,985	22,013	
75	Mar-19	15,589	7,109	22,698	
76	Apr-19	15,830	7,303	23,133	
77	May-19	15,718	7,274	22,992	
78	Jun-19	15,361	7,136	22,497	
79	Jul-19	15,707	6,834	22,541	
80	Aug-19	15,594	6,774	22,368	
81	Sep-19	15,717	6,964	22,681	
82	Oct-19	16,130	7,287	23,417	
83	Nov-19	15,465	7,251	22,716	
84	Dec-19	15,559	7,124	22,683	
85	Jan-20	16,712	7,389	24,101	
86	Feb-20	15,890	7,361	23,251	
87	Mar-20	16,120	7,318	23,438	
88	Apr-20	16,219	7,122	23,341	
89	May-20	15,740	6,974	22,714	
90	Jun-20	16,183	6,918	23,101	
91	Jul-20	16,698	6,929	23,627	
92	Aug-20	16,748	6,852	23,600	
93	Sep-20	16,853	6,835	23,688	
94	Oct-20	16,970	7,038	24,008	
95	Nov-20	16,197	6,727	22,924	
96	Dec-20	14,813	6,346	21,159	
97	Jan-21	17,506	7,383	24,889	
98	Feb-21	17,264	7,504	24,768	
99	Mar-21	18,164	7,780	25,944	
100	Apr-21	17,881	7,742	25,623	
101	May-21	17,847	7,701	25,548	
102	Jun-21	17,913	7,757	25,670	
103	Jul-21	17,096	7,293	24,389	
104	Aug-21	17,342	7,212	24,554	
105	Sep-21	17,176	7,222	24,398	
106	Oct-21	16,925	7,202	24,127	
107	Nov-21	16,593	7,258	23,851	
108	Dec-21	16,516	7,174	23,690	
117					
118	Notes:				
119	1. Monthly data is a duplicated count.				
120	2. Year-end data is unduplicated.				

	A	B	C	D	E	F	G	H	I	J	K	L	M
1	Table 9												
2	Department of Health and Human Services												
3	Operating Statistics												
4	Elderly & Adult Long Term Care												
5													
6		Total Nursing Clients		CFI Home Health	CFI Midlevel	Other Nursing	Nursing Home Beds		Pct in NF	APS Clients Assmnts	APS Cases Ongoing	SSBG AIHC Waitlist	Total SSBG IHCS
7		Actual	Budget	Note 2		Note 1	3 mo. Avg	Budget					Note 3
128	Jul-19	7,654	7,036	2,905	548	35	4,201	4,100	54.9%	318	414	0	1,336
129	Aug-19	7,580	7,036	2,930	553	23	4,097	4,100	54.1%	298	401	0	1,189
130	Sep-19	7,552	7,036	3,084	554	25	3,914	4,100	51.8%	249	399	0	1,470
131	Oct-19	7,831	7,036	3,167	577	23	4,087	4,100	52.2%	334	406	0	1,358
132	Nov-19	7,522	7,036	3,174	555	35	3,793	4,100	50.4%	288	407	0	1,360
133	Dec-19	7,474	7,036	3,162	546	32	3,766	4,100	50.4%	310	399	0	1,321
134	Jan-20	7,624	7,036	3,190	561	27	3,873	4,100	50.8%	320	417	0	1,297
135	Feb-20	7,660	7,036	3,150	519	29	3,991	4,100	52.1%	270	416	0	1,059
136	Mar-20	7,215	7,036	3,184	485	24	3,546	4,100	49.1%	252	444	0	1,576
137	Apr-20	7,713	7,036	3,231	495	21	3,987	4,100	51.7%	241	456	0	1,303
138	May-20	7,512	7,036	3,229	478	23	3,805	4,100	50.7%	219	458	0	762
139	Jun-20	7,664	7,036	3,290	497	31	3,877	4,100	50.6%	313	444	0	801
140	Jul-20	7,479	7,036	3,264	506	22	3,709	4,100	49.6%	350	421	0	1,067
141	Aug-20	7,490	7,036	3,248	498	21	3,744	4,100	50.0%	306	432	0	898
142	Sep-20	7,656	7,036	3,203	515	21	3,938	4,100	51.4%	316	439	0	1,398
143	Oct-20	7,566	7,036	3,258	507	22	3,801	4,100	50.2%	350	416	0	1,170
144	Nov-20	7,536	7,036	3,307	464	21	3,765	4,100	50.0%	284	420	0	1,203
145	Dec-20	7,584	7,036	3,312	489	21	3,783	4,100	49.9%	315	420	0	1,161
146	Jan-21	7,134	7,036	3,301	471	18	3,362	4,100	47.1%	287	422	0	1,149
147	Feb-21	7,357	7,036	3,342	470	19	3,545	4,100	48.2%	298	438	0	1,126
148	Mar-21	7,268	7,036	3,388	515	25	3,365	4,100	46.3%	402	429	0	1,173
149	Apr-21	7,200	7,036	3,292	512	20	3,396	4,100	47.2%	287	425	0	1,201
150	May-21	7,262	7,036	3,353	497	23	3,412	4,100	47.0%	280	428	0	1,167
151	Jun-21	7,500	7,036	3,304	525	30	3,671	4,100	48.9%	258	404	0	944
152	Jul-21	7,248	7,036	3,286	513	24	3,449	4,100	47.6%	265	405	0	1,221
153	Aug-21	7,248	7,036	3,286	513	24	3,449	4,100	47.6%	307	409	0	954
154	Sep-21	7,666	7,036	3,311	521	28	3,834	4,100	50.0%	305	392	0	1,432
155	Oct-21	7,244	7,036	3,343	496	21	3,405	4,100	47.0%	333	375	0	1,021
156	Nov-21	7,303	7,036	3,318	526	23	3,459	4,100	47.4%	307	352	0	1,300
157	Dec-21	7,269	7,036	3,348	497	23	3,424	4,100	47.1%	265	336	0	1,137
164													
165	ANNUAL AVERAGES												
166	SFY11	7,188	7,740	2,513	399	33	4,277	4,063	59.5%	212	1,071	3	620
167	SFY12	7,237	7,515	2,426	440	33	4,370	4,400	60.4%	226	1,084	6	681
168	SFY13	7,152	7,578	2,445	431	29	4,276	4,422	59.8%	211	1,172	2	657
169	SFY14	7,228	7,356	2,416	462	31	4,350	4,380	60.2%	277	1,249	1	594
170	SFY15	7,145	7,421	2,422	463	35	4,261	4,380	59.6%	265	751	0	1,541
171	SFY16	7,111	7,232	2,444	446	36	4,222	4,325	59.4%	306	737	0	1,626
172	SFY17	7,126	7,286	2,574	441	33	4,112	4,350	57.7%	292	626	0	1,560
173	SFY18	7,500	7,036	2,912	487	31	4,100	4,100	54.7%	253	443	0	1,398
174	SFY19	7,577	7,036	3,041	516	27	4,019	4,100	53.0%	273	395	0	1,301
175	SFY20	7,583	7,036	3,141	531	27	3,911	4,100	51.6%	284	422	0	1,236
176	SFY21	7,419	7,036	3,298	497	22	3,624	4,100	48.8%	311	425	0	1,138
177	SFY22	7,330	7,036	3,315	511	24	3,503	4,100	47.8%	297	378	0	1,178
178													
179	Note 1: These clients are also captured under OMBP Provider Payments												
180	Note 2: CFI Home Health = CFI Home Support and Home Health Care Waiver Services												
181	Note 3: In preparation for 2016, Converted IHCS to monthly paid basis												
182	Note 4: Four Midlevel facilities did not file claims during the month representing about 100 clients.												
183	Due to the reporting of Case Management under Home Health,												
184	these clients are however reported in the HH column.												
185													
186	Source of Data												
187	Columns												
188	D-F	MDSS monthly client counts											
189	G	3 month Avg of the number of paid bed days in the month/days in prior month											
190		by the number of days in the previous month. MDSS											
191	J	Options Monthly Protective Reports											
192	K	Options Monthly Activity Report											
193	L	SSBG Adult In-Home Care verbal report from Adult Protective Services Administrator											
194	M	Quarterly Options Paid Claims from Business Systems Unit Manager											

	A	B	C	D	E	F	G	H		
4	Developmental Services Long Term Care									
5										
6		Programs served FYTD**	FYTD Unduplicated Count	Early Supports & Services	Special Medical Services	Partners in Health Program	Devl. Serv. Priority #1 DD Waitlist	Devl. Serv. ABD Waitlist		
7					(8-09 to 8-12 Actual)	(8-09 to 8-12 Actual)	Actual*	Actual*		
117	NOTE: 9-1-18 --Column B "BDS Programs served FYTD" recalculated due to change in reports.									
118	Jul-18	11,078	7,383	2,404	1,291	870	See Tab 11.1	See Tab 11.2		
119	Aug-18	12,909	8,713	2,782	1,414	894				
120	Sep-18	11,897	9,480	3,053	1,515	902				
121	Oct-18	12,409	9,919	3,324	1,569	921				
122	Nov-18	12,835	10,265	3,541	1,629	941				
123	Dec-18	13,174	10,558	3,725	1,668	948				
124	Jan-19	13,696	11,009	4,009	1,714	973				
125	Feb-19	14,187	11,356	4,249	1,846	985				
126	Mar-19	14,718	11,769	4,550	1,938	1,011				
127	Apr-19	14,945	11,889	4,607	2,028	1,028				
129	Jun-19	15,670	12,464	5,038	2,150	1,056	See Tab 11.1	See Tab 11.2		
130	Jul-19	9,864	7,433	2,302	1,591	840				
131	Aug-19	11,464	8,924	2,732	1,679	861				
132	Sep-19	12,162	9,551	3,062	1,737	874				
133	Oct-19	12,646	9,928	3,277	1,826	892				
134	Nov-19	13,127	10,318	3,547	1,915	894				
135	Dec-19	13,573	10,664	3,776	2,001	908				
136	Jan-20	13,861	10,882	3,814	2,062	917				
137	Feb-20	14,579	11,523	4,040	2,122	934				
138	Mar-20	14,857	11,752	4,259	2,168	937				
139	Apr-20	15,024	11,899	4,362	2,180	945	See Tab 11.1	See Tab 11.2		
140	May-20	15,287	12,126	4,493	2,212	949				
141	Jun-20	15,538	12,294	4,595	2,286	958				
142	Jul-20	9,175	6,966	1,837	1,396	813				
143	Aug-20	10,413	8,153	2,141	1,444	816				
144	Sep-20	11,428	9,104	2,431	1,497	827				
145	Oct-20	11,932	9,520	2,703	1,577	835				
146	Nov-20	12,362	9,875	2,906	1,648	839				
147	Dec-20	12,654	10,104	3,038	1,704	846				
148	Jan-21	13,124	10,508	3,290	1,766	850				
149	Feb-21	13,334	10,648	3,363	1,827	859	See Tab 11.1	See Tab 11.2		
150	Mar-21	13,903	11,124	3,785	1,916	863				
151	Apr-21	14,268	11,407	3,991	1,983	878				
152	May-21	14,731	11,795	4,294	2,050	886				
153	Jun-21	15,082	12,089	4,532	2,112	881				
154		Programs Served FYTD **	FYTD Unduplicated Count	Early Supports & Services	Special Medical Services	Partners in Health Program			Devl. Serv. Priority #1 DD Waitlist	Devl. Serv. ABD Waitlist
155	Beginning 7/1/21, BDS Programs- FYTD Unduplicated Count will be BDS only and not include ESS									
156	Jul-21	9,247	5,218	1,919	1,377	733			See Tab 11.1	See Tab 11.2
157	Aug-21	10,817	6,142	2,525	1,404	746				
158	Sep-21	11,610	6,637	2,790	1,435	748				
159	Oct-21	12,249	6,902	3,114	1,478	755				
160	Nov-21	12,605	7,001	3,334	1,503	767				
161	Dec-21	12,924	7,083	3,534	1,535	772				
168										
169	ANNUAL AVERAGES ***									
170	SFY11	12,718	9,873	2,125	1,701	1,144	22	0		
171	SFY12	12,373	9,568	3,160	1,744	1,061	64	4		
172	SFY13	12,750	9,612	3,135	2,059	1,079	201	1		
173	SFY14	12,750	9,562	3,261	2,116	1,072	106	12		
174	SFY15	13,522	9,867	3,294	2,618	1,038	116	4		
175	SFY16	13,569	10,016	3,625	2,547	1,006	161	4		
176	SFY17	13,424	10,139	3,497	2,351	935	196	16		
177	SFY18	15,901	10,393	3,732	1,776	926	See Tab 11.1	See Tab 11.2		
178	SFY19	13,576	10,590	3,851	1,737	964				
179	SFY20	13,499	10,608	3,688	1,982	909	See Tab 11.1	See Tab 11.2		
180	SFY21	12,701	10,108	3,193	1,743	849				
181	SFY22	5,788	6,497	2,869	1,455	754	Tab 11.1	Tab 11.2		
182	***(1/4/16 - formulas corrected)									
183	Data Sources:	NHLeads	NHLeads	NHLeads	SMSdb	PIHdb	Registry	Registry		
184										
185	*G & *H Represent the number of individuals waiting at least 90-days for DD or ABD									
186	Waiver funding. Final SFY17 data only thru May 2017, then see Tab 11.1 & 11.2									
187	** BDS count excludes MTS Students served									
188	E & F Represents year-to-date total number served									

Table 11.2
Department of Health and Human Services
Operating Statistics
Acquired Brain Disorder (ABD) & In-Home Supports (IHS) Waitlist

	ABD Waitlist (1)				IHS Waitlist (1)			
	Begin WL	OFF (-)	NEW (+)	Ending WL	Begin WL	OFF (-)	NEW (+)	Ending WL
Jul-17	12	(1)	1	12	76	(23)	4	57
Aug-17	12	(5)	2	9	57	(10)	15	62
Sep-17	9	(1)	3	11	62	(13)	1	50
Oct-17	11	(1)	3	13	50	0	3	53
Nov-17	13	0	1	14	53	(5)	0	48
Dec-17	14	(1)	1	14	48	(12)	7	43
Jan-18	14	(14)	0	0	43	(43)	0	0
Feb-18	0	0	1	1	0	0	3	3
Mar-18	1	(1)	1	1	3	(2)	6	7
Apr-18	1	0	0	1	7	0	2	9
May-18	1	0	2	3	9	(1)	11	19
Jun-18	3	(3)	0	0	19	(3)	2	18
TOTALS FOR SFY18	12	(27)	15	0	76	(112)	54	18
Jul-18	0	0	0	0	18	(18)	16	16
Aug-18	0	0	2	2	16	(11)	5	10
Sep-18	2	(2)	0	0	10	(6)	4	8
Oct-18	0	0	0	0	8	(2)	4	10
Nov-18	0	0	0	0	10	(1)	7	16
Dec-18	0	0	0	0	16	(16)	0	0
Jan-19	0	0	0	0	0	0	6	6
Feb-19	0	0	0	0	6	(6)	1	1
Mar-19	0	0	0	0	1	(1)	0	0
Apr-19	0	0	0	0	0	0	0	0
May-19	0	(1)	1	0	0	(3)	3	0
Jun-19	0	0	0	0	0	0	0	0
TOTALS FOR SFY19	0	(3)	3	0	18	(64)	46	0
Jul-19	0	0	5	5	0	0	16	16
Aug-19	5	(3)	4	6	16	(4)	2	14
Sep-19	6	(1)	3	8	14	(5)	0	9
Oct-19	8	(8)	0	0	9	(9)	0	0
Nov-19	0	0	1	1	0	0	3	3
Dec-19	1	(1)	2	2	3	(2)	0	1
Jan-20	2	(2)	2	2	1	(1)	1	1
Feb-20	2	(2)	0	0	1	(1)	0	0
Mar-20	0	0	0	0	0	0	0	0
Apr-20	0	0	1	1	0	0	0	0
May-20	1	(1)	0	0	0	0	0	0
Jun-20	0	0	0	0	0	0	0	0
TOTALS FOR SFY20	0	(18)	18	0	0	(22)	22	0
Jul-20	0	0	0	0	0	0	0	0
Aug-20	0	0	1	1	0	0	1	1
Sep-20	1	(1)	0	0	1	(1)	0	0
Oct-20	0	0	1	1	0	0	1	1
Nov-20	1	(1)	0	0	1	(1)	0	0
Dec-20	0	0	0	0	0	0	0	0
Jan-21	0	0	0	0	0	0	1	1
Feb-21	0	0	0	0	1	(1)	0	0
Mar-21	0	0	0	0	0	0	0	0
Apr-21	0	0	1	1	0	0	1	1
May-21	1	(1)	0	0	1	(1)	1	1
Jun-21	0	0	0	0	1	(1)	0	0
TOTALS FOR SFY21	0	(3)	3	0	0	(5)	5	0
Jul-21	0	0	0	0	0	0	0	0
Aug-21	0	0	0	0	0	0	0	0
Sep-21	0	0	0	0	0	0	0	0
Oct-21	0	0	0	0	0	0	0	0
Nov-21	0	0	0	0	0	0	0	0
Dec-21	0	0	0	0	0	0	0	0
TOTALS FOR SFY22	0	0	0	0	0	0	0	0

(1) For SFY17 BDS did not track the "off" and "new" for ABD & IHS WL.

	A	B	C	D	E	F	G	H	I	J
1	Table 12									
2	Department of Health and Human Services									
3	Operating Statistics									
4	Shelters & Institutions									
5										
6		NHH					BHS			Glenciff
7		APS & APC Census Actual	APS & APC Admissions Actual	Adult APS Waiting List Actual	Adolescent APC Waiting List Actual	THS Census Actual	Emergency Shelter Clients Served Actual	Street Outreach Clients Served Actual	Clients Exited to Permanent Destinations Actual	GH Census Actual
8										
117	Jul-18	154	94	52	2	n/a				116
118	Aug-18	152	99	55	1	n/a				116
119	Sep-18	155	90	49	3	n/a				111
120	Oct-18	159	117	44	3	n/a				111
121	Nov-18	159	100	40	6	n/a				111
122	Dec-18	156	92	30	5	n/a				111
123	Jan-19	154	94	43	5	n/a				109
124	Feb-19	156	89	39	6	n/a				111
125	Mar-19	156	109	33	5	n/a				115
126	Apr-19	159	103	32	6	n/a				117
127	May-19	157	102	26	8	n/a				117
128	Jun-19	155	156	23	3	n/a				118
129	Jul-19	154	118	27	2	n/a				117
130	Aug-19	157	107	33	2	n/a				115
131	Sep-19	160	100	38	5	n/a				112
132	Oct-19	161	120	41	7	n/a				113
133	Nov-19	162	160	34	10	n/a				110
134	Dec-19	161	94	22	7	n/a				109
135	Jan-20	158	93	30	6	n/a				110
136	Feb-20	163	156	34	9	n/a				114
137	Mar-20	159	161	27	9	n/a				112
138	Apr-20	161	163	12	0	n/a				115
139	May-20	165	91	18	0	n/a				115
140	Jun-20	172	111	22	0	n/a				115
141	Jul-20	179	101	34	7	n/a				117
142	Aug-20	174	64	49	13	n/a				117
143	Sep-20	174	80	45	10	n/a				116
144	Oct-20	174	80	39	24	n/a				115
145	Nov-20	165	56	44	17	n/a				115
146	Dec-20	157	63	42	7	n/a				114
147	Jan-21	163	41	56	20	n/a				113
148	Feb-21	167	67	50	34	n/a				110
149	Mar-21	171	92	56	25	n/a				109
150	Apr-21	171	87	46	14	n/a				108
151	May-21	172	110	31	21	n/a				104
152	Jun-21	182	120	6	25	n/a				98
153	Jul-21	175	103	18	13	n/a	866	863	39	94
154	Aug-21	173	115	14	11	n/a	888	610	69	90
155	Sep-21	168	109	15	18	n/a	845	987	56	79
156	Oct-21	173	96	15	22	n/a	840	661	83	78
157	Nov-21					n/a	866	1,065	71	79
158	Dec-21	166	67	15	12	n/a	880	672	98	77
165										
166	YEAR-TO-DATE AVERAGE									
167	SFY11	151	192			42	n/a	n/a	n/a	111
168	SFY12	148	197			39	n/a	n/a	n/a	116
169	SFY13	153	164				n/a	n/a	n/a	118
170	SFY14	160	173				n/a	n/a	n/a	117
171	SFY15	148	167	21	5	n/a	n/a	n/a	n/a	116
172	SFY16	151	161	24	5	n/a	n/a	n/a	n/a	114
173	SFY17	160	148	35	5	n/a	n/a	n/a	n/a	108
174	SFY18	160	115	51	5	n/a	n/a	n/a	n/a	111
175	SFY19	156	104	39	4	n/a	n/a	n/a	n/a	114
176	SFY20	161	123	28	5	n/a	n/a	n/a	n/a	113
177	SFY21	171	80	42	18	n/a	n/a	n/a	n/a	111
178	SFY22-YTD	171	98	15	15	n/a	864	810	69	83
179										
180	Source of Data									
181	Column									
182	B	Daily in-house midnight census averaged per month*; April 2020 children's svc privatized and removed from #s								
183	C	Daily census report of admissions totalled per month; Children (APC) services were privatized in April 2020.								
184	D	Daily Average wait list for adults								
185	E	Daily average wait list for adolescents-Effective 4/1/2020 Under 18 transferred out of NHH								
186	F	Daily Average census in Transitional Housing (privatized 12/2011)								
187	G	Total number of Emergency Shelter Clients Served								
188	H	Total number of clients served by Street Outreach								
189	I	Total number of clients exited to permanent destinations								
190	J	Daily in-house midnight census averaged per month								
191										
192		* July 2014 average Census no longer reflects Pts on Leave								
193		4/29/2020 NHH discharged last child. facility is now 100% adult care.								

	A	AR	BD	BP	BQ	BR	BS	BT	BU	BV	BW	BX	BY	BZ	CA	CB	CC	CD	CE	CF	CG	CO
1	Table 13																					
2	Medicaid Medical Caseloads (Persons)																					
3		SFY 18			SFY 19			SFY 20			SFY 21			SFY 22								
4	Enrollment as of	6/30/2018	6/30/2019	6/30/2020	7/31/2020	8/30/2020	9/30/2020	10/31/2020	11/30/2020	12/31/2020	1/31/2021	2/28/2021	3/31/2021	4/30/2021	5/31/2021	6/30/2021	7/31/2021	8/30/2021	9/30/2021	10/31/2021	11/30/2021	12/31/2021
5																						
6	1. Low-Income Children (Age 0-18)	86,840	84,346	88,441	89,269	89,914	90,785	91,385	92,255	93,362	93,718	94,037	94,442	94,864	95,023	95,346	95,546	95,707	96,227	96,741	97,359	
7	2. Children With Severe Disabilities (Age 0-18)	1,400	1,328	1,276	1,265	1,259	1,262	1,254	1,251	1,237	1,231	1,221	1,214	1,204	1,200	1,207	1,194	1,190	1,204	1,195	1,194	
8	3. Foster Care & Adoption Subsidy (Age 0-25)	2,433	2,616	2,897	2,903	2,923	2,941	2,961	2,963	2,953	2,979	3,001	3,018	3,040	3,064	3,081	3,103	3,131	3,148	3,186	3,226	
9	4. Low-Income Parents (Age 19-64)	10,814	10,175	12,868	13,315	13,671	14,094	14,298	14,741	15,230	14,879	14,881	14,999	15,166	15,138	15,265	15,618	15,786	16,167	16,477	16,852	
10	5. Low-Income Pregnant Women (Age 19+)	1,974	1,930	2,072	2,168	2,218	2,231	2,268	2,364	2,451	2,458	2,436	2,459	2,274	2,243	2,292	2,278	2,289	2,313	2,344	2,378	
11	6. Adults With Disabilities (Age 19-64)	17,862	16,992	17,512	17,601	17,645	17,719	17,783	17,806	17,829	17,879	17,843	17,885	17,903	17,907	17,940	17,995	18,052	18,065	18,081	18,069	
12	7. Elderly & Elderly With Disabilities (Age 65+)	9,059	9,269	9,452	9,544	9,488	9,668	9,670	9,758	9,766	9,823	9,763	9,792	9,876	9,945	9,886	10,039	10,159	10,202	10,226	10,278	
13	8. BCCP (Age 19-64) ***	146	123	N/A	N/A	N/A	N/A	N/A	N/A	N/A	N/A	N/A	N/A	N/A	N/A	N/A	N/A	N/A	N/A	N/A	N/A	
14	9. Sub-Total Medicaid excluding Expansion	130,337	126,779	134,618	136,065	137,118	138,680	139,599	141,138	142,828	142,967	143,182	143,809	144,327	144,520	145,117	145,713	146,383	147,326	148,250	149,158	
15	9. NH Health Protection Program / Granite Advantage (A)	52,507	49,155	58,918	60,134	61,460	63,105	64,525	66,708	69,443	71,073	72,392	73,829	75,208	76,268	77,030	77,748	78,815	79,612	81,629	83,316	
16	Total By Category - Full Medicaid	182,844	175,934	193,436	196,199	198,578	201,785	204,124	207,844	212,271	214,040	215,574	217,638	219,535	220,788	222,207	223,459	225,198	226,938	230,079	232,474	
17																						
18																						
19	Limited Medicaid Benefits:				7/31/2020	8/30/2020	9/30/2020	10/31/2020	11/30/2020	12/31/2020	1/31/2021	2/28/2021	3/31/2021	4/30/2021	5/31/2021	6/30/2021	7/31/2021	8/30/2021	9/30/2021	10/31/2021	11/30/2021	
20	Limited Family Planning Benefit				640	617	631	683	703	669	654	689	722	744	713	697	665	650	633	619	591	
21	Limited Coronavirus Testing Benefit				1,738	1,841	1,841	1,834	3,602	5,489	6,546	7,133	7,715	8,078	8,291	8,438	8,537	8,828	9,238	9,466	9,818	
22	Total Limited Medicaid Benefit				2,378	2,458	2,472	2,517	4,305	6,158	7,200	7,802	8,437	8,822	9,004	9,133	9,232	9,468	9,869	10,085	10,409	
23																						
24	*** Not reporting just BCCP. This category is now included in Low Income Parents and BCCP (Age 19-64)																					

		A	B	C	D	E	F	G	H	I	J	K	L	M	N	O	P	Q	R	S											
1		Table 14																													
2		Department of Health and Human Services																													
3		Caseloads Versus Prior Year & Prior Month																													
4		Unduplicated Persons					Medicaid Persons					Long Term Care-Seniors					FANF Persons					APTD Persons					SNAP Persons				
5		Actual	Vs PY	Vs Pmo	Actual	Vs PY	Vs Pmo	Actual	Vs PY	Vs Pmo	Actual	Vs PY	Vs Pmo	Actual	Vs PY	Vs Pmo	Actual	Vs PY	Vs Pmo	Actual	Vs PY	Vs Pmo	Actual	Vs PY	Vs Pmo	Actual	Vs PY	Vs Pmo			
6		Actual	Vs PY	Vs Pmo	Actual	Vs PY	Vs Pmo	Actual	Vs PY	Vs Pmo	Actual	Vs PY	Vs Pmo	Actual	Vs PY	Vs Pmo	Actual	Vs PY	Vs Pmo	Actual	Vs PY	Vs Pmo	Actual	Vs PY	Vs Pmo	Actual	Vs PY	Vs Pmo			
128	Jul-18	197,192	-1.1%	-0.3%	182,207	-1.1%	-0.3%	7,591	2.7%	0.0%	7,425	49.0%	0.8%	6,163	-6.1%	-0.9%	84,338	-6.8%	-1.2%												
129	Aug-18	197,232	-1.3%	0.0%	182,386	-1.3%	0.1%	7,624	2.9%	0.4%	7,440	36.8%	0.2%	6,121	-6.7%	-0.7%	83,632	-7.3%	-0.8%												
130	Sep-18	196,054	-1.7%	-0.6%	181,148	-1.7%	-0.7%	7,532	1.7%	-1.2%	7,461	29.2%	0.3%	6,070	-6.7%	-0.8%	82,277	-8.5%	-1.6%												
131	Oct-18	195,717	-1.6%	-0.2%	180,639	-1.5%	-0.2%	7,609	2.8%	1.0%	7,454	19.2%	-0.1%	6,057	-5.8%	-0.2%	79,947	-10.8%	-2.8%												
132	Nov-18	195,238	-2.3%	-0.2%	180,348	-2.4%	-0.3%	7,468	0.2%	-1.9%	7,551	14.8%	1.3%	6,022	-5.9%	-0.6%	79,319	-10.9%	-0.8%												
133	Dec-18	195,073	-2.8%	-0.1%	180,313	-2.9%	0.0%	7,471	0.8%	0.0%	7,630	12.0%	1.0%	5,963	-5.4%	-1.0%	78,169	-11.7%	-1.4%												
134	Jan-19	196,159	-2.2%	0.6%	181,283	-2.3%	0.5%	7,458	-2.4%	-0.2%	7,849	11.1%	2.9%	5,941	-5.8%	-0.4%	78,683	-11.0%	0.7%												
135	Feb-19	194,463	-2.6%	-0.9%	179,492	-2.7%	-1.0%	7,613	-0.3%	2.1%	7,831	9.3%	-0.2%	5,931	-5.7%	-0.2%	77,613	-11.8%	-1.4%												
136	Mar-19	193,087	-3.3%	-0.7%	178,248	-3.4%	-0.7%	7,550	-1.0%	-0.8%	7,705	9.0%	-1.6%	5,835	-6.7%	-1.6%	76,805	-12.4%	-1.0%												
137	Apr-19	192,791	-3.2%	-0.2%	178,012	-3.3%	-0.1%	7,533	1.1%	-0.2%	7,785	8.8%	1.0%	5,865	-6.1%	0.5%	76,197	-12.5%	-0.8%												
138	May-19	191,883	-3.5%	-0.5%	177,265	-3.6%	-0.4%	7,884	4.0%	11500.0%	7,834	7.1%	0.6%	5,891	-5.7%	0.4%	75,478	-12.5%	-0.9%												
139	Jun-19	190,487	-3.7%	-0.7%	175,934	-3.8%	-0.8%	7,244	-4.6%	-8.1%	7,761	5.4%	-0.9%	5,860	-5.7%	-0.5%	74,440	-12.8%	-1.4%												
140	Jul-19	190,663	-3.3%	0.1%	176,125	-3.3%	0.1%	7,654	0.8%	5.7%	7,788	4.9%	0.3%	5,889	-4.4%	0.5%	73,970	-12.3%	-0.6%												
141	Aug-19	190,361	-3.5%	-0.2%	175,834	-3.6%	-0.2%	7,580	-0.6%	-1.0%	7,758	4.3%	-0.4%	5,895	-3.7%	0.1%	73,959	-11.6%	0.0%												
142	Sep-19	190,385	-2.9%	0.0%	175,653	-3.0%	-0.1%	7,552	0.3%	-0.4%	7,812	4.7%	0.7%	5,893	-2.9%	0.0%	73,673	-10.5%	-0.4%												
143	Oct-19	190,806	-2.5%	0.2%	176,379	-2.5%	0.4%	7,831	2.9%	3.7%	7,878	5.7%	0.8%	5,902	-2.6%	0.2%	73,666	-7.9%	0.0%												
144	Nov-19	191,216	-2.1%	0.2%	176,722	-2.0%	0.2%	7,522	0.7%	-3.9%	7,912	4.8%	0.4%	5,878	-2.4%	-0.4%	73,084	-7.9%	-0.8%												
145	Dec-19	192,708	-1.2%	0.8%	178,342	-1.1%	0.9%	7,474	0.0%	-0.6%	7,836	2.7%	-1.0%	5,860	-1.9%	-0.5%	72,635	-7.1%	-0.6%												
146	Jan-20	193,435	-1.4%	0.4%	179,100	-1.2%	0.4%	7,624	2.2%	2.0%	7,742	-1.4%	-1.2%	5,794	-2.5%	-1.0%	72,466	-7.9%	-0.2%												
147	Feb-20	193,442	-0.5%	0.0%	178,930	-0.3%	-0.1%	7,660	0.6%	0.5%	7,653	-2.3%	-1.1%	5,772	-2.7%	-0.4%	72,096	-7.1%	-0.5%												
148	Mar-20	194,079	0.5%	0.3%	179,510	0.7%	0.3%	7,215	-4.4%	-5.8%	7,635	-0.9%	-0.2%	5,753	-1.4%	-0.3%	72,139	-6.1%	0.1%												
149	Apr-20	201,105	4.3%	3.6%	187,079	5.1%	4.2%	7,713	2.4%	6.9%	8,107	4.1%	6.2%	5,828	-0.6%	1.3%	77,455	1.7%	7.4%												
150	May-20	204,937	6.8%	1.9%	190,988	7.7%	2.1%	7,512	-4.7%	-2.6%	8,063	2.9%	-0.5%	5,852	-0.7%	0.4%	77,965	3.3%	0.7%												
151	Jun-20	207,268	8.8%	1.1%	193,438	9.9%	1.3%	7,664	5.8%	2.0%	7,937	2.3%	-1.6%	5,862	-0.1%	0.0%	72,263	-2.9%	-7.3%												
152	Jul-20	210,042	10.2%	1.3%	196,200	11.4%	1.4%	7,479	-2.3%	-2.4%	7,814	0.3%	-1.5%	5,771	-2.0%	-1.4%	69,898	-5.5%	-3.3%												
153	Aug-20	210,042	10.3%	0.0%	196,200	11.6%	0.0%	7,490	-1.2%	0.1%	7,612	-1.9%	-2.6%	5,686	-3.5%	-1.5%	69,700	-5.8%	-0.3%												
154	Sep-20	215,468	13.2%	2.6%	201,788	14.9%	2.8%	7,656	1.4%	2.2%	7,542	-3.5%	-0.9%	5,543	-5.9%	-2.5%	69,992	-5.0%	0.4%												
155	Oct-20	217,791	14.1%	1.1%	204,126	15.7%	1.2%	7,666	-3.4%	-1.2%	7,106	-9.8%	-5.8%	5,407	-8.4%	-2.5%	70,292	-4.6%	0.4%												
156	Nov-20	221,424	15.8%	1.7%	207,847	17.6%	1.8%	7,536	0.2%	-0.4%	6,951	-12.1%	-2.2%	5,337	-9.2%	-1.3%	70,109	-4.1%	-0.3%												
157	Dec-20	225,760	17.2%	2.0%	212,271	19.0%	2.1%	7,584	1.5%	0.6%	6,906	-11.9%	-0.6%	5,277	-9.8%	-1.1%	70,222	-3.3%	0.2%												
158	Jan-21	227,473	17.6%	0.8%	214,040	19.5%	0.8%	7,134	-6.4%	-5.9%	6,605	-14.7%	-4.4%	5,032	-13.2%	-4.6%	68,883	-4.9%	-1.9%												
159	Feb-21	229,039	18.4%	0.7%	215,574	20.5%	0.7%	7,357	-4.0%	3.1%	6,543	-14.5%	-0.9%	4,975	-13.8%	-1.1%	68,595	-4.9%	-0.4%												
160	Mar-21	231,212	19.1%	0.9%	217,640	21.2%	1.0%	7,268	0.7%	-1.2%	6,511	-14.7%	-0.5%	4,953	-13.9%	-0.4%	69,748	-3.3%	1.7%												
161	Apr-21	233,157	19.9%	0.8%	219,536	21.3%	0.9%	7,200	-6.7%	-0.9%	6,300	-22.3%	-3.2%	4,863	-16.6%	-1.8%	69,005	-10.9%	-1.1%												
162	May-21	234,319	14.3%	0.5%	220,790	15.6%	0.6%	7,262	-3.3%	0.9%	6,100	-24.3%	-3.2%	4,750	-18.8%	-2.3%	68,912	-11.6%	-0.1%												
163	Jun-21	235,734	13.7%	0.6%	222,209	14.9%	0.6%	7,500	-2.1%	3.3%	6,046	-23.8%	-0.9%	4,719	-19.4%	-0.7%	68,482	-5.2%	-0.6%												
164	Jul-21	237,114	12.9%	0.6%	223,461	13.9%	0.6%	7,248	-3.1%	-3.4%	5,983	-23.4%	-1.0%	4,692	-18.7%	-0.6%	68,250	-2.4%	-0.3%												
165	Aug-21	238,710	13.6%	0.7%	225,201	14.8%	0.8%	7,248	-3.2%	0.0%	5,938	-22.0%	-0.8%	4,696	-17.4%	0.1%	68,213	-2.1%	-0.1%												
166	Sep-21	240,511	11.6%	0.8%	226,938	12.5%	0.8%	7,666	0.1%	5.8%	5,870	-22.2%	-1.1%	4,678	-15.6%	-0.4%	68,713	-1.8%	0.7%												
167	Oct-21	243,603	11.9%	1.3%	230,079	12.7%	1.4%	7,244	-4.3%	-5.5%	5,780	-18.7%	-1.5%	4,600	-14.9%	-1.7%	68,852	-2.0%	0.2%												
168	Nov-21	246,075	11.1%	1.0%	232,474	11.8%	1.0%	7,303	-3.1%	0.8%	5,752	-17.2%	-0.5%	4,570	-14.4%	-0.7%	68,903	-1.7%	0.1%												
169	Dec-21	248,549	10.1%	1.0%	234,957	10.7%	1.1%	7,269	-4.2%	-0.5%	5,646	-18.2%	-1.8%	4,493	-14.9%	-1.7%	68,561	-2.3%	-0.5%												
176																															
177		ANNUAL AVERAGES																													
178	SFY10	145,949			117,025			7,288			14,098			8,284			99,219														
179	SFY11	152,821	4.7%		119,612	2.2%		7,188	-1.4%		13,696	-2.8%		8,794	6.2%		112,302	13.2%													
180	SFY12	154,715	1.2%		119,832	0.2%		7,237	0.7%		10,870	-20.6%		8,778	-0.2%		115,967	3.3%													
181	SFY13	155,664	0.6%		129,721	8.3%		7,197	-0.5%		8,494	-21.9%		8,136	-7.3%		117,899	1.6%													
182	SFY14	155,707	0.0%		132,385	2.1%		7,226	0.4%		7,449	-12.3%		7,835	-3.7%		113,331	-3.9%													
183	SFY15	184,891	18.7%		166,736	25.9%		7,145	-1.2%		6,582	-11.6%		7,603	-3.0%		107,602	-6.1%													
184	SFY16	200,640	8.5%		184,547	10.9%		7,111	-0.5%		5,584	-15.2%		7,201	-5.3%		101,117	-6.0%													
185	SFY17	201,649	0.5%		186,381	0.8%		7,126	0.2%		4,996	-10.5%		6,752	-6.2%		93,907	-7.1%													
186	SFY18	199,496	-1.1%		184,411	-1.1%		7,500	5.2%		6,580	31.7%		6,361	-5.8%		88,384	-5.9%													
187	SFY19	194,615	-2.4%		179,790	-2.5%		7,548	0.6%		7,644	16.2%		5,977	-6.0%		78,908	-10.7%													
188	SFY20	195,034	0.2%		180,675	0.5%		7,583	0.5%		7,843	2.6%		5,847	-2.2%		73,781	-6.5%													
189	SFY21	224,288	15.0%		210,685	16.6%		7,419	-2.2%		6,836	-12.8%		5,193	-11.2%		69,487	-6.8%													
190	SFY22	242,427	8.1%		228,852	8.6%		3,665	-50.6%		2,914	-57.4%		2,311	-55.5%		34,293	-50.6%													

Table 15
Department of Health and Human Services
Operating Statistics
SUD Financial Activity - SUMMARY
SFY 19-22 Contracts Issued and Spent as of 12.31.21

SFY 2022 Contract Line Summary	Funding	Actual Provider Contract	Provider Contract/Obligated Funds
Governor Commission:			
Appropriation Cls 049/074/085/102	11,126,667		
Available Funds to Transfers	0		
Balance forward from Contract encumbrances	7,175,954		
Available funds brought forward from 6/30/21	0		
TOTAL AVAILABLE FUNDING TO DATE:	18,302,621		
SFY22 Contract Encumbrances	17,753,686	4,784,609	12,969,077
*Obligated funds not encumbered (Gov Comm Drugzar/SYC Renov)	390,305		
TOTAL OBLIGATED FUNDING TO DATE:	18,143,991	4,784,609	12,969,077
TOTAL FUNDS AVAILABLE TO DATE*			

SEE Detail on following page

*Note: Total funds available to date includes funds obligated but not yet encumbered, thus this will not match SOA

SFY 2022 Contract Line Summary	Funding Amount	Actual Provider Contract Spent	Provider Contract/Obligated Funds Unspent
Clinical Services			
Appropriation Cls 049/074/085/102	5,439,921		
Available Funds to Transfers	0		
Balance forward from Contract encumbrances	3,961,076		
Available funds brought forward from 6/30/21	0		
TOTAL AVAILABLE FUNDING TO DATE:	9,400,997		
SFY22 Contract Encumbrances	7,166,312	1,813,466	5,352,846
TOTAL OBLIGATED FUNDING TO DATE:	7,166,312	1,813,466	5,352,846
TOTAL FUNDS AVAILABLE TO DATE			

SEE Detail on following page

SFY 2022 Contract Line Summary	Funding Amount	Actual Provider Contract Spent	Provider Contract/Obligated Funds Unspent
Prevention Services			
Appropriation Cls 049/074/085/102	4,075,591		
Available Funds to Transfers	0		
Balance forward from Contract encumbrances	1,294,668		
Available funds brought forward from 6/30/21	0		
TOTAL AVAILABLE FUNDING TO DATE:	5,370,259		
SFY22 Contract Encumbrances	3,523,868	1,159,493	2,364,375
TOTAL OBLIGATED FUNDING TO DATE:	3,523,868	1,159,493	2,364,375
TOTAL FUNDS AVAILABLE TO DATE			

SEE Detail on following page

Table 15 - a
Department of Health and Human Services
Operating Statistics
SUD Financial Activity - DETAIL BY CONTRACT - CLINICAL SERVICE FUNDS
SFY 19-22 Contracts Issued and Spent as of 12.31.21
GOVERNOR COMMISSION FUNDED SERVICES CONTRACTS ONLY

PO #	Description	Provider	Expenses Paid SFY22	Remaining Encumbrance
	Refund Checks/Adjustments		(330,613.65)	-
1075975	Community Support after Incarceration	ADMINISTRATIVE OFFICE COURTS	607,549.32	807,109.61
1064835	Funding to Doorway to support those that aren't covered with SOR	ANDROSCOGGIN VALLEY HOSPITAL	1,944.00	23,056.00
1076202	Data Collection & Analysis	ARKANSAS FDN FOR MEDICAL CARE	113,267.91	360,924.54
	Substance Use Disorder Treatment	BETTER LIFE PARTNERS INC	-	-
1077969	Substance Use Disorder Treatment	BRIDGE STREET RECOVERY LLC	-	213,720.00
1072944	Funding to Doorway to support those that aren't covered with SOR	CATHOLIC MEDICAL CENTER	76,403.59	156,036.56
1063330	Home Visits	CENTRAL NH VNA & HOSPICE	7,230.00	17,161.00
1064838	Funding to Doorway to support those that aren't covered with SOR	CHESHIRE MEDICAL CENTER	59,530.42	8,849.39
	TBD Substance Use Disorder Treatment	CHESHIRE MEDICAL CENTER	-	60,015.00
1073073	Substance Misuse among children awareness	CITY DOVER	13,596.83	53,716.47
1063325	Home Visits	COMMUNITY ACTION PARTNERSHIP	18,483.90	68,639.34
1063324	Home Visits	COMMUNITY ACTION PROGRAM	-	73,013.00
1062982	Substance Use Disorder Treatment	COMMUNITY COUNCIL OF NASHUA	-	962.00
1062982	Substance Use Disorder Treatment	COMMUNITY COUNCIL OF NASHUA NH	1,608.54	28,144.00
1064885	Funding to Doorway to support those that aren't covered with SOR	CONCORD HOSPITAL	37,948.66	32,590.11
	Funding to Doorway to support those that aren't covered with SOR	CONCORD HOSPITAL - LACONIA	28,735.46	117,226.54
1077603	Substance Use Disorder Treatment	COUNTY OF GRAFTON	34,558.88	64,632.00
1065135	Funding to Doorway to support those that aren't covered with SOR	DARTMOUTH HITCHCOCK MEDICAL	17,044.07	13,749.24
1071712	School Climate Transformation	DEPT OF EDUCATION	-	78,732.89
1076465	Multi Tier System	DEPT OF EDUCATION	30,847.75	858,273.95
1077574	Purple Heart	DEPT OF EDUCATION	2,187.00	305,813.00
1077575	Prevention & Intervention NH School Dist	DEPT OF EDUCATION	72,645.73	359,931.54
	Ask the Question	DEPT OF MIL & VET SVS	-	105,000.00
1077330	Substance Use Disorder Treatment	DISMA'S HOME OF NEW HAMPSHIRE	8,731.00	64,884.25
1077602	Substance Use Disorder Treatment	EASTER SEALS OF NH INC	63,815.09	443,712.05
1063327 / 1063328	Home Visits	FAMILY RESOURCE CTR GORHAM	-	4,994.96
1077333	Substance Use Disorder Treatment	FIT-NHH INC	64,936.12	310,435.55
1053365	MAT in the Community	FOUNDATION F/HEALTH COMMUNITIE	291,894.06	940,028.46
	TBD Professional Awareness Campaign	FOUNDATION F/HEALTH COMMUNITIE	-	50,000.00
TBD	Student Assistance Program	FRANKLIN SCHOOL DISTRICT	-	75,667.00
1081553	Homeless Outreach	FRIENDS OF RECOVERY - NH	4,611.28	39,138.72
1081549	Homeless Outreach	GOODWIN COMMUNITY HEALTH	-	43,750.00
1078143	Family Support Coordinator	GOODWIN COMMUNITY HEALTH	36,044.54	102,782.88
n/a	Governor's Advisor	GOVERNOR'S OFFICE	50,145.94	-
1081550	Homeless Outreach	GRANITE PWY DOORWAY MANCHESTE	10,440.10	33,309.90
1077577	Recovery Friendly Workforce Initives	GRANITE UNITED WAY	232,380.59	501,071.69
1081551	Homeless Outreach	GREATER TILTON AREA FAMILY RES	4,900.52	38,849.48
1057974	Tech Assistance	GROWTH PARTNERS LLC	135,191.99	354,262.09
1063242	Substance Use Disorder Treatment	GRTR NASHUA CNCL ON ALCOHOLISM	-	17,077.10
1077604	Substance Use Disorder Treatment	HARBOR CARE	27,692.23	141,021.21
1075288	Peer Recovery Support Svs-Facilitating Org	HARBOR HOMES INC	1,061,577.76	1,878,708.42
1077331	Substance Use Disorder Treatment	HEADREST	2,990.30	96,129.50
1063331	Home Visits	HOME HEALTH HOSPICE & COMM SVS	7,814.00	-
1063243	Substance Use Disorder Treatment	HOPE ON HAVEN HILL	7,858.39	92,660.91
1057942	Home Visits Support	JSI RESEARCH & TRNG INST	61,401.22	934.80
1065160	Gov Comm Admin/Svs to Science/Prevention Ad	JSI RESEARCH & TRNG INST	641,678.78	589,045.48
1070902	Tobacco & Alcohol Surveillance	LIQUOR COMMISSION	31,488.06	120,850.36

Table 15 - a
Department of Health and Human Services
Operating Statistics
SUD Financial Activity - DETAIL BY CONTRACT - CLINICAL SERVICE FUNDS
SFY 19-22 Contracts Issued and Spent as of 12.31.21
GOVERNOR COMMISSION FUNDED SERVICES CONTRACTS ONLY

PO #	Description	Provider	Expenses Paid SFY22	Remaining Encumbrance
1064836	Funding to Doorway to support those that aren't covered with SOR	LITTLETON HOSPITAL ASSOCIATION	-	25,000.00
1064837	Funding to Doorway to support those that aren't covered with SOR	LRG HEALTHCARE	-	10,000.00
1067994	Prevent & Mitigate Adverse Childhood Experiences	NEW HAMPSHIRE CHILDREN'S TRUST	52,413.45	54,502.11
1076082	Traning	NH ALCOHOL&DRUG ABUSE COUNSEL	71,743.30	53,768.59
1070177	Prevent & Mitigate Adverse Childhood Experiences	NH COALITION AGAINST DOMESTIC	164,049.57	263,001.51
1070719	Recovery Housing Certification and Rental Assistance	NH COALITION OF RECOVERY RESID	160,975.61	485,581.88
1070611	Life of an Athlete Program	NH INTERSCHOLASTIC ATHLETIC	7,792.91	511,739.99
1053697	NH Juvenile Diversion Program	NH JUV COURT DIVERSION NETWORK	85,833.15	292,274.77
1081554	Professional Awareness Campaign	NH MEDICAL SOCIETY	-	50,000.00
1081739	Professional Awareness Campaign	NH PROVIDERS ASSOCIATION	25,000.00	25,000.00
1056422	Prevention Direct Svs	NH TEEN INST PREVENTION	99,399.26	207,229.75
1058007	Prevention Direct Svs	NORTH COUNTRY EDUCATION SVCS	101,681.11	103,127.40
1077329	Substance Use Disorder Treatment	NORTH COUNTRY HEALTH CONSORTIUM	-	39,958.77
1077329	Student Assistance	NORTH COUNTRY HEALTH CONSORTIUM	766.91	74,233.09
1062985	Substance Use Disorder Treatment	PHOENIX HOUSE OF NEW ENGLAND	70,937.55	20,661.00
1048758	Mentorship Program	PREVENTION CERTIFICATION BOARD	4,450.00	17,618.08
1058002	Prevention Direct Svs	SALEM BOYS & GIRLS CLUB	67,718.00	275,945.72
1077606	Substance Use Disorder Treatment	SE NH ALCOHOL & DRUG ABUSE SVS	-	195,027.37
1064304	Student Assistance Program	SECOND START	28,081.88	171,918.12
1072945	Funding to Doorway to support those that aren't covered with SOR	SOUTHERN NH MEDICAL CENTER	89,761.45	4,428.55
1075470	Prevention Direct Svs	THE UPPER ROOM	45,388.61	50,668.98
1063329	Home Visits	TLC FAMILY RESOURCE CTR	24,992.68	45,007.32
1063326	Home Visits	WAYPOINT	-	49,195.20
1069265	Funding to Doorway to support those that aren't covered with SOR	WENTWORTH-DOUGLASS HOSPITAL	106,700.00	82,169.00
1077334	Substance Use Disorder Treatment	WEST CENTRAL SVS INC	88.00	5,132.49
1056421	Prevention Direct Svs	YOUTH COUNCIL	38,275.44	109,276.47
3382 - Governor Commission			4,784,609.26	12,969,077.15

Table 15 - b
Department of Health and Human Services
Operating Statistics
SUD Financial Activity - DETAIL BY CONTRACT - CLINICAL SERVICE FUNDS
SFY 19-22 Contracts Issued and Spent as of 12.31.21
CLINICAL SERVICES CONTRACTS ONLY

PO #	Description	Provider	Expenses Paid SFY22	Remaining Encumbrance
	Refund checks/Adjustments		26,427.14	
1076202	Data Collection & Analysis	ARKANSAS FDN FOR MEDICAL CARE	37,756.03	120,308.27
	Substance Use Disorder Treatment	BETTER LIFE PARTNERS INC	-	-
	MAT Services	BI-STATE PRIMARY CARE ASSN	1,428.27	-
1077969	Substance Use Disorder Treatment	BRIDGE STREET RECOVERY LLC	-	452,947.00
1081693	Substance Use Disorder Treatment	CHESHIRE MEDICAL CENTER	-	127,193.00
1073698	Safe Station	CITY OF MANCHESTER	103,572.60	166,598.21
1077576	Substance Use Disorder Treatment	COMMUNITY COUNCIL OF NASHUA	3,688.56	61,399.00
1077603	Substance Use Disorder Treatment	COUNTY OF GRAFTON	52,535.86	150,206.60
1077330	Substance Use Disorder Treatment	DISMAS HOME OF NEW HAMPSHIRE	18,519.00	111,442.00
1077602	Substance Use Disorder Treatment	EASTER SEALS OF NH INC	244,710.26	1,203,911.08
1062818	SUD Sub System	FEI.COM INC	-	53,948.50
1077333	Substance Use Disorder Treatment	FIT-NHNH INC	47,831.40	868,342.20
1075974	MAT in the Community	FOUNDATIONS COUNSELING	36,564.61	34,550.22
1081586	Technical Assistance	GROWTH PARTNERS LLC	307,859.07	13,505.93
1063242	Substance Use Disorder Treatment	GRTR NASHUA CNCL ON ALCOHOLIS	-	2,785.75
1075288	PRSS - FO	HARBOR CARE	493,550.76	827,040.72
1077604	Substance Use Disorder Treatment	HARBOR HOMES INC	137,268.57	178,117.76
1077331	Substance Use Disorder Treatment	HEADREST	38,225.86	81,834.24
1077605	Substance Use Disorder Treatment	HOPE ON HAVEN HILL	18,706.38	171,162.32
1065160	Gov Comm Admin/Prevention Ad/	JSI RESEARCH & TRNG INST	1,942.95	36,515.09
1076082	Training	NH ALCOHOL&DRUG ABUSE COUNS	28,324.72	92,301.93
1077329	Substance Use Disorder Treatment	NORTH COUNTRY HEALTH CONSOR	-	180,692.70
1077332	Substance Use Disorder Treatment	PHOENIX HOUSE OF NEW ENGLAND	193,929.17	-
1077606	Substance Use Disorder Treatment	SE NH ALCOHOL & DRUG ABUSE SV.	20,404.88	368,383.66
1071017	MLADC	THERESA MCCAFFERTY	-	37,665.00
1077334	Substance Use Disorder Treatment	WEST CENTRAL SVS INC	220.00	11,994.47
	(blank)			
3384 - Clincial Svs (Treatment)			1,813,466.09	5,352,845.65

Table 15 - c
 Department of Health and Human Services
 Operating Statistics
 SUD Financial Activity - DETAIL BY CONTRACT - CLINICAL SERVICE FUNDS
 SFY 19-22 Contracts Issued and Spent as of 12.31.21
 PREVENTION SERVICES CONTRACTS ONLY

PO #	Description	Provider	Expenses Paid SFY22	Remaining Encumbrance
	Refund checks/Adjustments		(328.91)	-
1068196	Reg Public Health Network	CHESHIRE COUNTY	20,901.50	77,114.40
1081693	Reg Public Health Network	CHESHIRE MEDICAL CENTER	24,041.55	109,944.45
1068192	Reg Public Health Network	CITY OF MANCHESTER	77,444.62	136,566.01
1070165	Reg Public Health Network	CITY OF NASHUA	57,379.56	114,717.42
1064305	Student Assistance Program	CITY OF ROCHESTER	-	-
1065162	Student Assistance Program	CLAREMONT SCHOOL DISTRICT	-	-
1075456	Student Assistance Program	CONWAY SCHOOL DISTRICT SAU 9	70,000.00	70,000.00
1070241/1070662	Reg Public Health Network	DARTMOUTH HITCHCOCK MEDICAL	107,803.85	252,687.25
1058309	Student Assistance Program	FARMINGTON SCHOOL DIST SAU 61	-	-
1058310	Student Assistance Program	FRANKLIN SCHOOL DISTRICT	-	-
1068193	Reg Public Health Network	GOODWIN COMMUNITY HEALTH	66,576.43	126,637.54
1070726/1070239/				
1070242	Reg Public Health Network	GRANITE UNITED WAY	195,551.31	382,445.92
1058311	Student Assistance Program	LACONIA SCHOOL DISTRICT	12,092.99	-
1068197	Reg Public Health Network	LAKE REGION PARTNERSHIP FOR	66,916.26	110,320.66
1068191	Reg Public Health Network	LAMPREY HEALTH CARE	31,348.87	149,965.36
1070902	Surveillance on Youth (SYNAR	LIQUOR COMMISSION	20,943.90	88,566.69
1075469	Student Assistance Program	MANCHESTER SCHOOL DIST SAU 37	24,787.56	-
1070241/1070662	Reg Public Health Network	MARY HITCHCOCK MEMORIAL HOSPIT	-	38,481.19
1068190	Reg Public Health Network	MID-STATE HEALTH CTR	58,179.88	139,052.37
1058318	Student Assistance Program	MONADNOCK FAMILY SVS	-	-
1065161	Student Assistance Program	NEWPORT SCHOOL DIST SAU 43	11,400.00	168,600.00
1064306	Student Assistance Program	NORTH COUNTRY EDUCATION SVCS	26,509.17	-
1064300	Student Assistance Program	NORTH COUNTRY HEALTH CONSORTII	121,912.95	111,485.69
1068199	Reg Public Health Network	NORTH COUNTRY HEALTH CONSORTII	-	-
1058319	Student Assistance Program	RAYMOND SCHOOL DISTRICT SAU 33	20,497.95	-
1064303	Student Assistance Program	SANBORN REG SCHOOL DIST SAU 17	21,557.10	37,707.29
1064299	Student Assistance Program	SAU 64-MILTON	-	76,366.00
1056785	Student Assistance Program	SEACOAST MENTAL HEALTH CTR INC	30,262.00	60,538.00
1064302	Student Assistance Program	SEACOAST YOUTH SERVICES	48,163.64	58,166.12
1064304	Student Assistance Program	SECOND START	17,659.29	28.27
1069090	Student Assistance Program	THE CITY OF PORTSMOUTH	27,891.63	54,984.36
	3380-Prevention Svs	Grand Total	\$1,159,493.10	\$2,364,374.99

Table 16
Department of Health and Human Services
Operating Statistics
SUD Caseloads

Unique Clients Receiving Any SUD Services by Service Month

Paid Year Month	Unique Clients With Paid Claims	
	MEDICAID	Non- Medicaid SUD FUNDED
2018-07	4,431	460
2018-08	4,533	495
2018-09	4,262	437
2018-10	4,591	545
2018-11	4,638	408
2018-12	4,948	389
2019-01	6,106	378
2019-02	6,485	353
2019-03	7,322	451
2019-04	7,088	423
2019-05	7,490	443
2019-06	7,678	411
SFY 19 YTD COUNTS UNDUPLICATED		
2019-07	7,807	259
2019-08	7,658	378
2019-09	7,505	373
2019-10	7,303	388
2019-11	7,174	403
2019-12	8,109	460
2020-01	8,552	538
2020-02	8,088	507
2020-03	8,317	547
2020-04	8,096	410
2020-05	8,011	576
2020-06	8,413	363
SFY 20 YTD COUNTS UNDUPLICATED		
2020-07	8,351	413
2020-08	8,285	360
2020-09	8,436	341
2020-10	8,552	206
2020-11	8,679	197
2020-12	8,558	215
2021-01	8,219	274
2021-02	8,299	194
2021-03	9,155	260
2021-04	9,774	204
2021-05	9,898	265
2021-06	9,042	197
SFY 21 YTD COUNTS UNDUPLICATED		
2021-07	9,107	188
2021-08	9,306	298
2021-09	9,961	250
2021-10	9,174	*
2021-11		
2021-12		
SFY 22 YTD COUNTS UNDUPLICATED		

*BDAS can no longer obtain this count in the

Prepared by DHHS - OQAI - DA Andrew

Non-medicaid SUD
WITS: BDAS NH Web Information Technology System (WITS) SFY 2017
Prepared by Mike Rogers, BDAS

Sam



STATE OF NEW HAMPSHIRE 2 of 11 117 RCVG



GOVERNOR'S OFFICE

for

EMERGENCY RELIEF AND RECOVERY

FIS 22 086

Late Item

February 11, 2022

The Honorable Karen Umberger, Chairman
Fiscal Committee of the General Court
State House
Concord, New Hampshire 03301

His Excellency, Governor Christopher T. Sununu
and the Honorable Council
State House
Concord, New Hampshire 03301

REQUESTED ACTION

Pursuant to RSA 14:30-a VI, authorize the Governor's Office For Emergency Relief and Recovery (GOFERR) to accept and expend \$30,032,503 in American Rescue Plan Act (ARPA) Emergency Rental Assistance (ERA2) financial assistance funds to fund the New Hampshire Emergency Rental Assistance Program (NHERAP), effective upon Fiscal Committee and Governor and Council approval through June 30, 2023. This is an allowable use of ERA Housing Stability Services funds under ARPA, section 3201(d) to provide financial assistance to eligible households, not to exceed 18 months, including the payment of rent, rental arrears, utilities and home energy costs, utilities and home energy costs arrears, and other expenses related to housing as allowed by U.S. Treasury to help keep households stably housed. 100% Federal Funds.

Funds are to be budgeted in FY2022 in the following account:

Table with 5 columns: CLASS, ACCOUNT, CURRENT MODIFIED BUDGET, BUDGET REQUEST, REVISED BUDGET. Rows include EXPENDITURES (040, 041, 072, TOTAL EXPENSES) and SOURCE OF FUNDS (000 - Federal Funds, TOTAL REVENUE).

The Honorable Karen Umberger, Chairman
Fiscal Committee of the General Court

His Excellency, Governor Christopher T. Sununu
and the Honorable Council
Page 2 of 3

EXPLANATION

GOFERR is requesting to accept and expend \$30,032,503 in American Rescue Plan Act (ARPA), Emergency Rental Assistance (ERA2) financial assistance funds to support the New Hampshire Emergency Rental Assistance Program (NHERAP).

Housing stability and access to affordable housing were a problem in New Hampshire before the pandemic and they have been exacerbated by it. More than 50 percent of New Hampshire households reported losing at least some income as a result of the pandemic. As a result, many tenants fell behind in rent, putting their housing at risk, and stressing the finances of landlords as well.

NHERAP provides financial assistance and housing stability services to eligible households that have lost income or experienced other financial hardship because of the Coronavirus Disease 2019 (COVID-19) pandemic, including the payment of (i) rent, (ii) rental arrears, (iii) utilities and home energy costs, (iv) utilities and home energy costs arrears, and (v) other expenses related to housing.

To date, NHERAP has been funded from federal funds made available pursuant to Section 501(a) of Division N of the Consolidated Appropriations Act of 2021 (ERA1). ERA2 provides the same financial assistance provided under ERA1 for a greater number of households. Under ERA1, an eligible household must have experienced a reduction in household income, incurred significant costs, or experienced other financial hardship *due to* COVID-19. ERA2 has the potential to serve a greater number of households because an eligible household need only show that it experienced a reduction in household income, incurred significant costs, or experienced other financial hardship *during* COVID-19. Additionally, under ERA2 households may receive 3 additional months of assistance. Further, while the State has not yet expended all of the ERA1 funds allocated, switching to ERA2 at this time will allow the State an opportunity to maintain its full allocation under ERA2 funding and expand the uses of that funding to include “affordable rental housing and eviction prevention activities, as defined by [U.S. Treasury] serving very low-income families.”

NHERAP is administered by New Hampshire Housing Finance Authority (NHHFA), in collaboration with the Governor’s Office For Emergency Relief and Recovery (GOFERR). NHHFA is working with the five regional Community Action Partnerships (CAPs), which are accepting and processing applications and payments for the program.

All sub-grantees selected by NHHFA shall use the funding only to address NHERAP allowable costs.

Funds are budgeted as follows:

Class 040 – Indirect Costs

Class 041 – Audit Fund Set-Aside - .001 of federal funds payable to DAS for audit fees

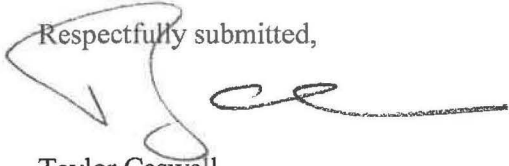
Class 072 – Grants out of Federal Funds as described in the explanation

The Honorable Karen Umberger, Chairman
Fiscal Committee of the General Court

His Excellency, Governor Christopher T. Sununu
and the Honorable Council
Page 3 of 3

In the event that Federal Funds become no longer available, General Funds will not be requested to support this program.

Respectfully submitted,

A handwritten signature in black ink, appearing to read 'Taylor Caswell', written over a circular stamp or mark.

Taylor Caswell
Executive Director

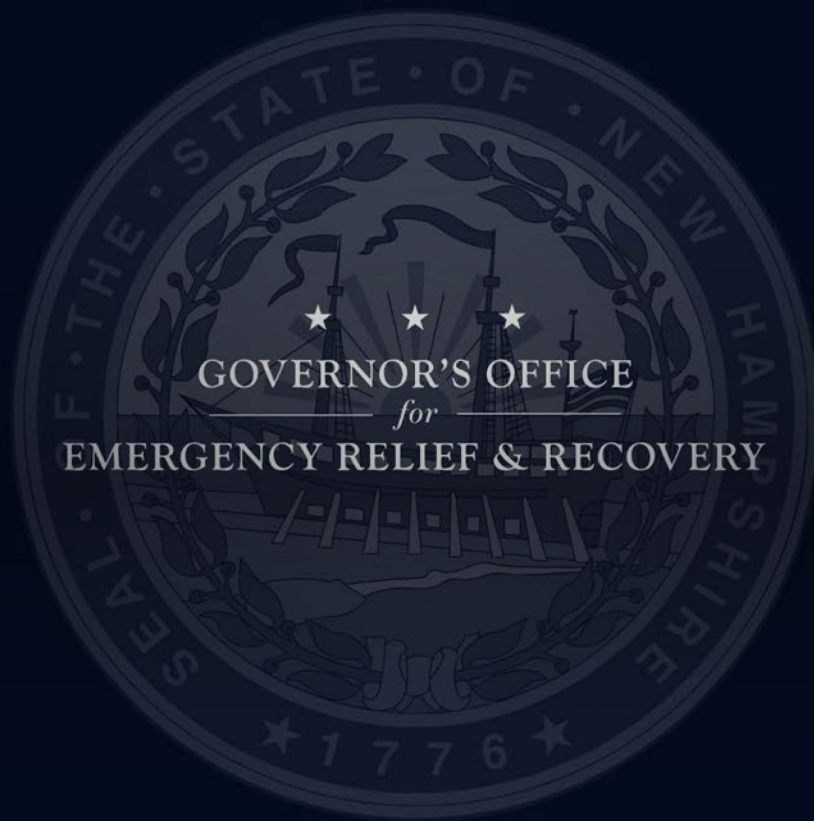
GOFERR - CARES Act Funds Overview

All funds as of February 11, 2022

Fund Name	Program Name	
Administrative Budget	Administrative Budget	\$3,387,352
Agency Support	Board of Tax and Land Appeals	\$9,023
	Call Center Support Services for NHES	\$4,317,395
	Department of Information Technology	\$4,748,582
	Department of Safety	\$511,225
	DHHS COVID-19 Support Funds	\$22,725,199
	Mutual Link	\$1,853,685
	New Hampshire Liquor Commission Employee Wage Enhancement	\$1,388,745
	NH DOE iLearnNH System	\$1,251,056
	NHES Support	\$250,000
	State Agency COVID Related Reimbursements	\$15,480,816
Agriculture COVID-19 Relief Fund	Agriculture COVID-19 Relief Fund	\$6,992,378
Connecting New Hampshire - Emergency Broadband Expansion Program	Connecting New Hampshire - Emergency Broadband Expansion Program	\$13,083,527
COVID Business Expense Relief	COVID Business Expense Relief	\$11,803,436
Domestic and Sexual Violence Relief Program	Domestic and Sexual Violence Relief Program	\$600,000
First Responder & Correctional Officer Incentive Stipend Program	First Responder & Correctional Officer Incentive Stipend Program	\$19,863,219
General Court COVID-19 Expense Reimbursement	General Court COVID-19 Expense Reimbursement	\$537,348
Healthcare System Relief Fund	Healthcare Provider Relief Program	\$89,738,947
	Long Term Care Provider Program	\$26,059,577
Hospital Reimbursement for Covid-19 Surge	Hospital Reimbursement for Covid-19 Surge	\$8,540,545
Housing Relief Fund	Housing Relief Fund	\$14,952,550
Inter-City Transportation Program	Inter-City Transportation Program	\$7,500,000
Live Venue Relief Program	2021 Live Venue Relief Program	\$1,493,017
	Live Venue Relief Program	\$12,078,762
Lodging Relief Program	Lodging Relief Program	\$9,214,439

Fund Name	Program Name	
Long Term Care Relief	Long Term Care Relief	\$7,667,500
Long Term Care Stabilization Program	Long Term Care Stabilization Program	\$98,145,900
Main Street Relief Fund	Main Street Relief 2.0	\$99,196,581
	Main Street Relief Fund	\$326,993,846
	Self Employed Livelihood Fund (SELF)	\$39,619,925
Mental Health and Substance Use Disorder (SUD) Support and Relief Fund For Adults	Additional Substance Use Disorder (SUD) Associated Programs	\$2,068,485
	Mental Health and Substance Use Disorder (SUD) Support and Re..	\$3,372,374
Municipal & County COVID-19 Cost Reimbursement Program	County COVID-19 Cost Reimbursement Program	\$8,000,000
	Municipal COVID-19 Cost Reimbursement Program	\$30,599,424
New Hampshire Access To Justice Fund	Judicial Council Programs	\$1,553,345
	Safer Courthouses Program	\$1,515,660
New Hampshire Childcare Recovery and Stabili..	New Hampshire Childcare Recovery and Stabilization Program (C..	\$34,804,818
New Hampshire COVID Community Support Program	New Hampshire COVID Community Support Program	\$477,291
	Office of Child Advocate	\$12,135
New Hampshire Economic Restart Fund	New Hampshire Chamber of Commerce Partnership Program	\$1,965,349
	New Hampshire Economic Restart Fund	\$1,498,500
	Stay Safe Public Service Announcement	\$199,869
New Hampshire General Assistance & Preserva..	New Hampshire General Assistance & Preservation (GAP) Fund	\$20,364,916
New Hampshire Higher Education COVID-19 Response Fund	Public Higher Education System Relief Program - CCSNH	\$8,008,178
	Public Higher Education System Relief Program - USNH	\$33,000,000
	Safer Scholars - COVID-19 Campus Modification Program	\$8,073,669
New Hampshire Internet Crimes Against Children Taskforce Grant	New Hampshire Internet Crimes Against Children Taskforce Grant	\$698,530
New Hampshire Invest In the Future Fund	Education Enrichment Provider Program	\$1,476,286
	Empowering Youth Program	\$3,368,964
	Governor's Youth Council Program	\$703,120
	Special Education Provider Fund	\$3,815,506
	Support for ESL Remote Learning	\$586,237
	Supporting Children In Care Program	\$475,500
New Hampshire Veterans COVID-19 Relief and Support Fund	New Hampshire Charities for Veterans Relief Program	\$777,624
	New Hampshire Veterans Homelessness and Mental Health Supp..	\$4,000,000
	NH Veterans COVID-19 Relief and Support Fund	\$3,000,000
New Hampshire Volunteers COVID-19 Response Program	New Hampshire Volunteers COVID-19 Response Program	\$1,019,582
NHES Summer Stipend Return to Work Program	NHES Summer Stipend Return to Work Program	\$2,500,000
Nonprofit Emergency Relief Fund (NERF)	Nonprofit Emergency Relief Fund (NERF)	\$41,219,926

Fund Name	Program Name	
Raymond Sunview Grant	Raymond Sunview Grant	\$20,928
Relief and Recovery - Unemployment Trust Fund	Relief and Recovery - Unemployment Trust Fund	\$50,000,000
Secretary of State	Secretary of State	\$27,600
Senior Center Relief	Senior Center Relief	\$203,397
Shelter Relief Programs	Safer Spaces - COVID-19 Shelter Modification Program	\$12,910,350
	Shelter Relief	\$309,671
Snowmobile	Snowmobile	\$249,878
Supplemental Public School Response Fund	Supplemental Public School Response Fund	\$44,426,845
Virtual Learning Academy Support	Virtual Learning Academy Support	\$5,424,855
	Total	\$1,183,106,763



GOVERNOR'S OFFICE
for
EMERGENCY RELIEF & RECOVERY

Summary Outline

- Statutory Background and Guidance
- Fund Usage and Data
- Program Process
- Federal Recoupment Requirements
- CARES Act CRF Status
- Questions

Important Dates & Timeline

March 13, 2020

Governor Sununu Declares State of Emergency

March 27, 2020

CARES Act Signed Into Law

April 14, 2020

Governor Establishes GOFERR through Executive Order 2020-06

May 15, 2020

\$400M Main Street Relief Fund begins accepting applications

July 17, 2020

\$1B in CARES Act funds have been allocated towards relief programs

December 27, 2020

CARES Act Deadline Extended To December 31, 2021, GOFERR begins extending CARES Act programming

June 11, 2021

New Hampshire State of Emergency Expires

June 24, 2021

GOFERR begins opening Business and Healthcare Recoupment Relief Programs

December 31, 2021

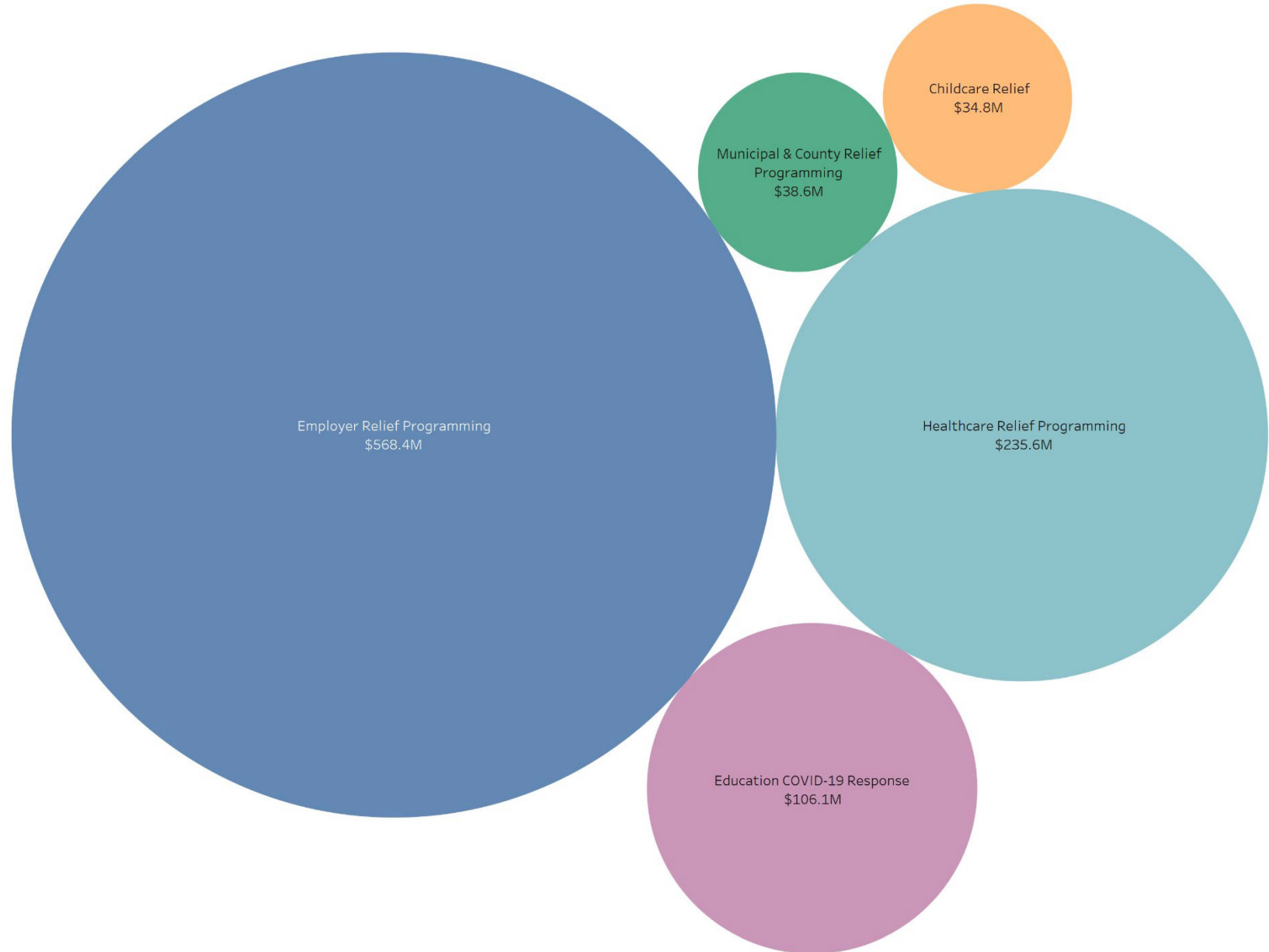
CARES Act eligible-use period ends, funds cannot be allocated any longer

CARES Act At-A-Glance

- Since April, 2020, \$1.18B in CARES Act CRF funds have been expended
- Over 70 relief programs, and over 15,000 recipients
- Roughly half of CRF funds were invested in employer-targeted relief

Snapshot

- \$568.4M for Employer Relief Programming
- \$235.6M for Healthcare Relief Programming
- \$106.1M for Education COVID-19 Response
- \$38.6M for Municipal & County Relief Programming
- \$34.8M for Childcare Relief Programming



Program Process

- I. Eligibility review
- II. Program definition
 - i. e.g., application design, review
- III. Technical assistance
- IV. Awards/monitoring
- V. Reporting

CARES Act CRF Status

- **Authorizations & Programs being closed out**

- Including: Assessing final expenditures & Processing recouped funds

- **Waterfall**

- Remaining CARES Act funds go into NH Unemployment Trust Fund

- **Final process**

- Federal reporting requirements remain
- Final closeout will continue through September 2022