

Joint Economic Briefing Public Health Update

Patricia M Tilley

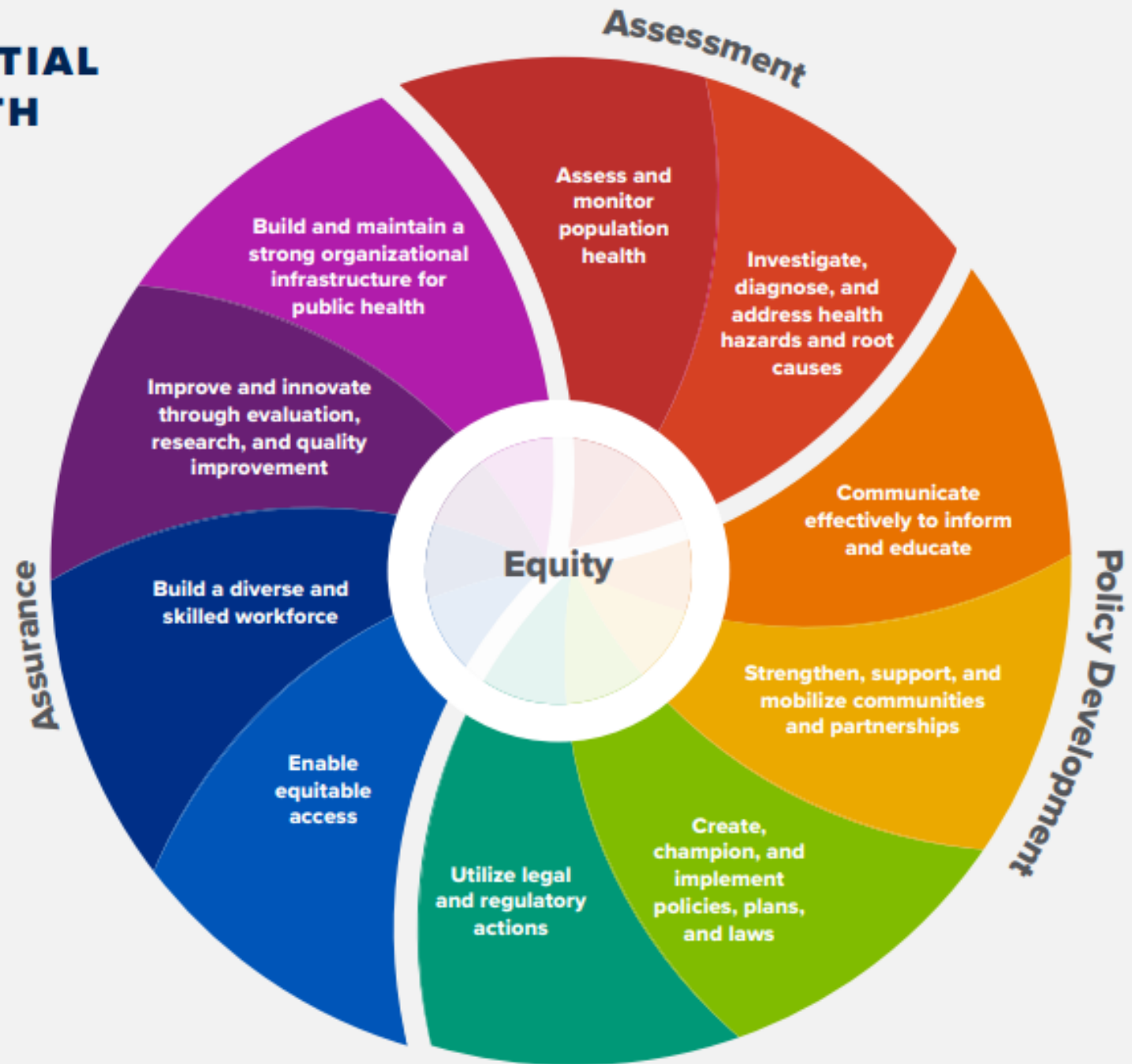
Deputy Director, NH Division of Public Health Services

1/20/21

THE 10 ESSENTIAL PUBLIC HEALTH SERVICES

To protect and promote the health of all people in all communities

The 10 Essential Public Health Services provide a framework for public health to protect and promote the health of all people in all communities. To achieve optimal health for all, the Essential Public Health Services actively promote policies, systems, and services that enable good health and seek to remove obstacles and systemic and structural barriers, such as poverty, racism, gender discrimination, and other forms of oppression, that have resulted in health inequities. Everyone should have a fair and just opportunity to achieve good health and well-being.



Authority to Respond to COVID 19

RSA 141-C:1

The outbreak and spread of communicable disease cause unnecessary risks to health and life, interfere with the orderly workings of business, industry, government, and the process of education, and disrupt the day-to-day affairs of communities and citizens.

Because the control of communicable disease may be attained by personal actions, the timely intervention of medical practices, and cooperation among health care providers, federal, state, and municipal officials, and other groups and agencies, it is hereby declared to be the policy of this state that communicable diseases be prevented, and that such occurrences be identified, controlled, and, when possible, eradicated at the earliest possible time by application of appropriate public health measures and medical practices.

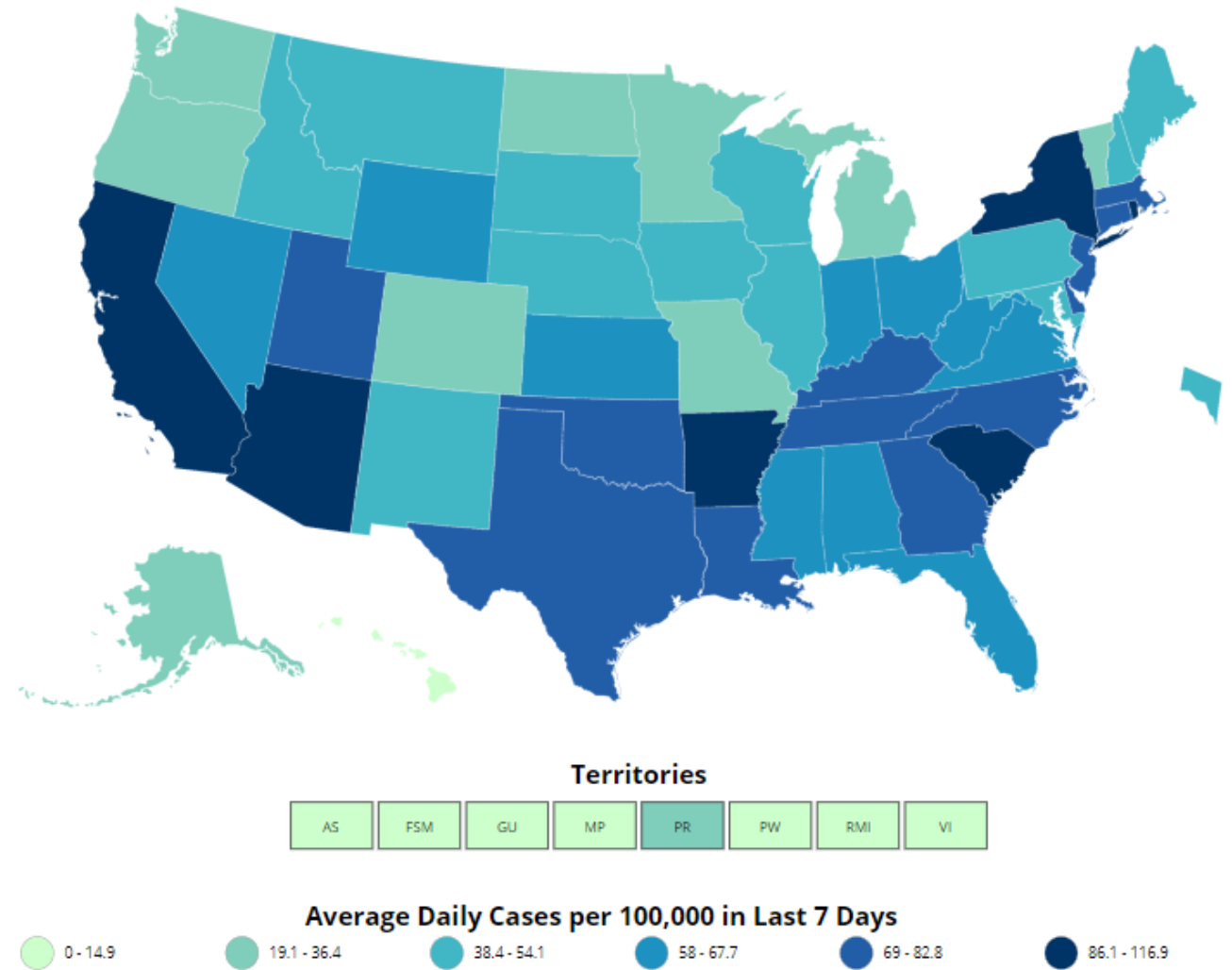
US COVID-19 Average Daily Case Rate in Last 7 Days (cases per 100K)

Global Confirmed
96,269,168

Global Deaths
2,059,772





U.S. Confirmed
24,254,283

U.S. Deaths
401,777

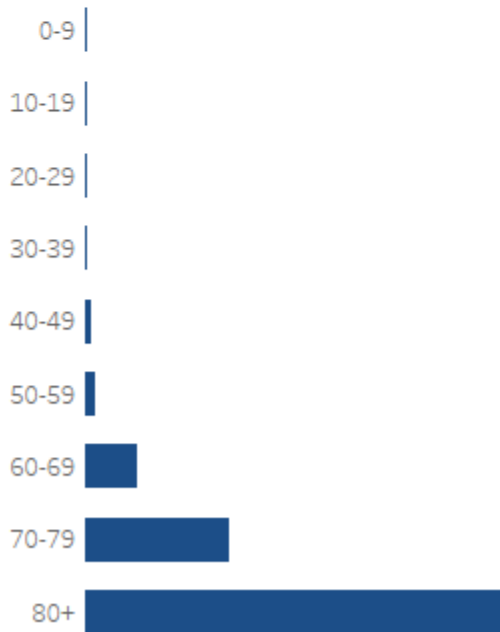




New Hampshire announced **334 cases** for January 19. There were an average of **615 cases per day** over the most recent 7-day period (January 13 to January 19). This is a **27% decrease** compared to the previous 7-day period.

	58,709 Total Cases 6,126 Active Cases		971 Total Hosp. 254 Current Hosp.		6.9% 7-Day Test Positivity 9,265 Avg. Daily Tests		51,645 Total Recovered 938 Total Deaths
---	--	---	--	---	--	---	--

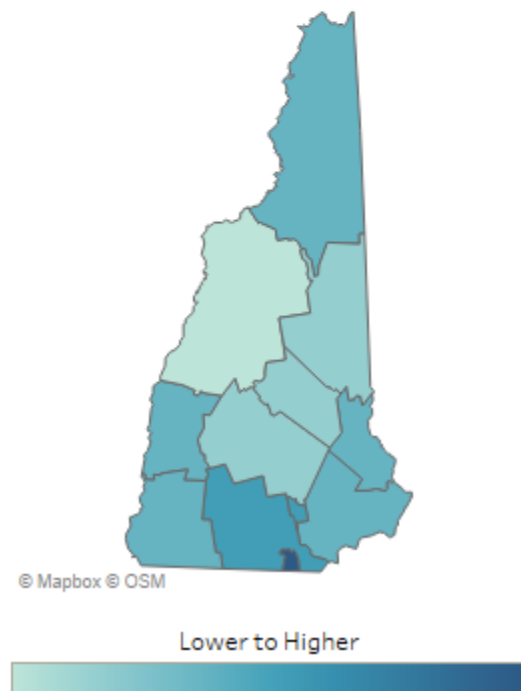
↓ Total Deaths by Age



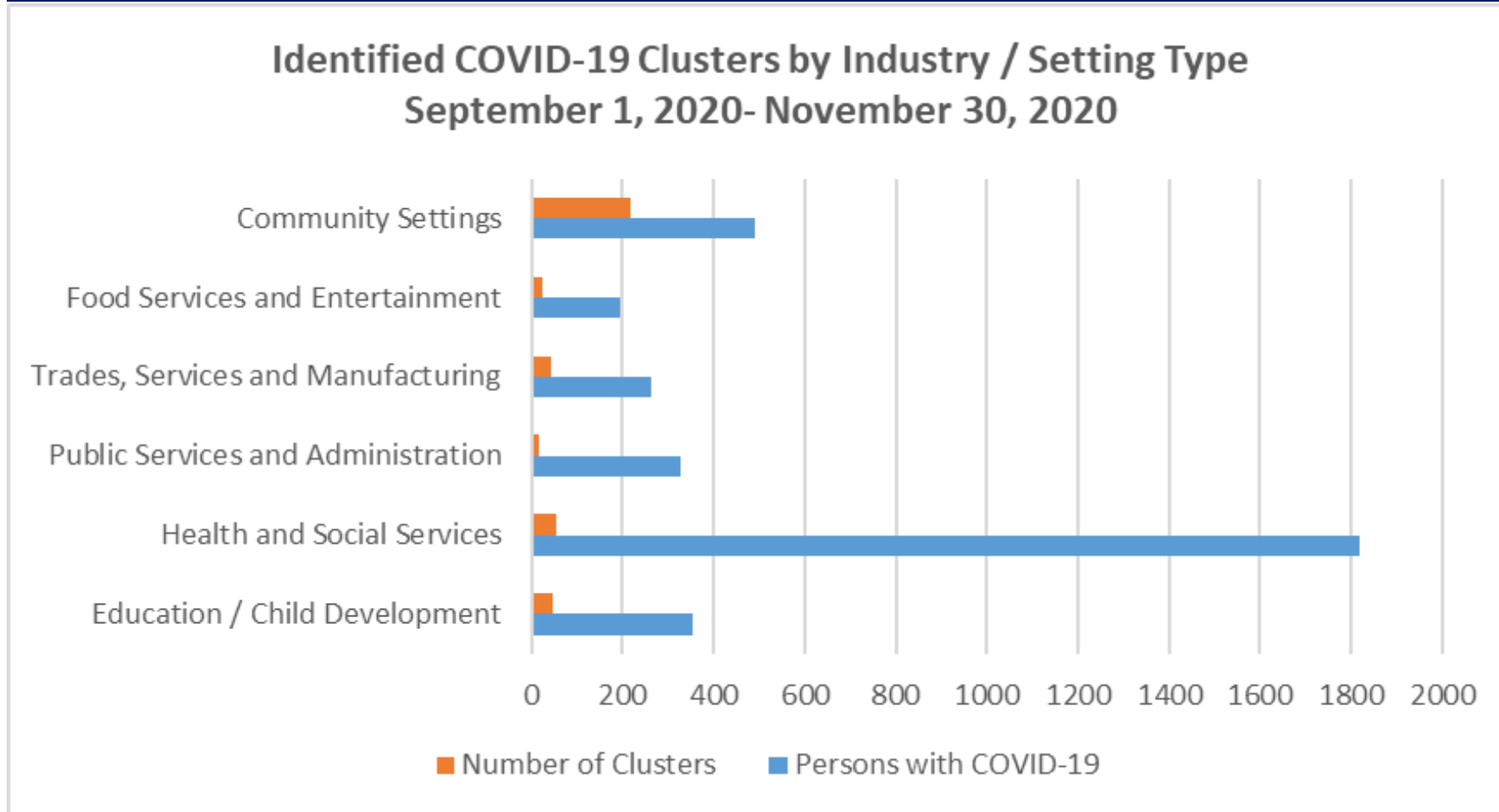
↓ Daily Trend for New Cases



↓ New Cases per 100k over 14 days



Data Snapshot: *September-November 2020*



A cluster of COVID-19 is **three or more people** with COVID-19 occurring at the same location or within a group of individuals who do not live in the same household and evidence of transmission within that setting.

All data are based upon information provided to the New Hampshire Department of Health and Human Services under specific legislative authority. The numbers reported may represent an underestimate of the true absolute number. The department is not responsible for any duplication or misrepresentation of surveillance data released in this report. Data are complete as of 12-31-2020.

1/20/2021

New virus variants that spread more easily could lead to a rapid rise in COVID-19 cases

NOW, more than ever, it is important to **slow the spread**

In the U.S.

- ⚠️ New cases are the highest ever and rising
- ⚠️ Some health care systems are at or near capacity
- ⚠️ New variants are emerging that spread more easily

MORE SPREAD

MORE CASES

MORE DEATHS



Wear a mask



Stay at least 6 feet apart



Avoid crowds



Get vaccinated when available to you



All businesses deemed 'essential' under the Governor's [Emergency Order 17](#) as well as those industries provided new guidance to re-open under [Stay at Home 2.0](#), must adhere to [Universal Guidelines](#).



Safer at Home

UNIVERSAL GUIDELINES

Universal Guidelines apply to all businesses, organizations, and individual business operators for the operation of their business and must be complied with in conjunction with any applicable industry specific guidelines issued by the State of New Hampshire.

- *Screening employees and the public for COVID symptoms and travel risk*
- *Cleaning and disinfection*
- *Work process modifications for social distancing and mask use*
- *Quarantine and isolation requirements*

CORONAVIRUS DISEASE 2019

(COVID-19)

COVID-19 vaccines will be an important tool to help stop the pandemic.



[cdc.gov/coronavirus](https://www.cdc.gov/coronavirus)



When can I get a **COVID-19 VACCINE** in NH?

Updated: 1/14/2021



PHASE 1

PHASE 1A

- High-risk health workers
- First responders
- Older adults living in residential care settings

PHASE 1B

- People ≥ 65 years old
- Medically vulnerable at *significantly* higher risk with 2 or more conditions
 - Family caregivers of those medically vulnerable persons, ≤ 16 years old not eligible for vaccine
- Residents and staff of residential facilities for persons with intellectual and developmental disabilities
- Corrections officers and staff working in correctional facilities
- First responders and health workers not already vaccinated

DECEMBER - MARCH*



PHASE 2

PHASE 2A

- K-12 school and childcare staff

PHASE 2B

- People 50 - 64 years old

MARCH - MAY*



PHASE 3

PHASE 3A

- Medically vulnerable < 50 years old at *moderately* higher risk with 1 or more conditions

PHASE 3B

- Everyone else not already vaccinated

MAY and BEYOND*

Additional details are coming soon.

Contact 2-1-1 for more information and visit nh.gov/covid19 for updates.



ReadyNH.gov
TAKE ACTION. BE SAFE.



*Estimated time frame depends on vaccine doses allocated to NH from the federal government and vaccine uptake.

1/14/21

Updated NH Quarantine Guidance

If you have been identified as a close contact to someone diagnosed with COVID-19, you DO NOT need to quarantine if:

- You are fully vaccinated against COVID-19 (2 doses) and more than 14 days have passed since you have received your second dose; or
- You have tested positive for active COVID-19 infection (PCR or Antigen testing) in the last 90 days.



Frequently Asked Questions

[COVID-19 Vaccine Frequently Asked Questions \(FAQs\) for NH Schools, Employers, Employees and Businesses](#)

[What You Should Know About COVID-19 and the ADA, the Rehabilitation Act, and Other EEO Laws.](#)

- Will the COVID-19 vaccines be added to the list of mandatory vaccinations for schools?
- What should a business consider before imposing a COVID-19 vaccine mandate?
- Can an employer require its employees to get a COVID-19 vaccine in order to come to work?
- Can a business require customers to show proof of COVID-19 vaccination in order to patronize that business?

What's Next?



- Phase 1b registration starts **January 22**
- Phase 1b vaccinations start **January 26**
- Figure out when it is your turn at NH Vaccine Phase Check

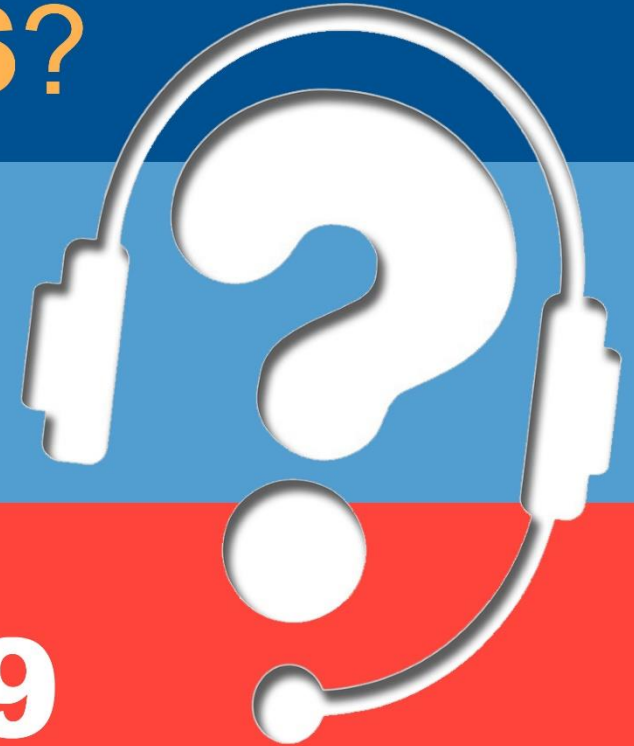
<https://www.vaccines.nh.gov/>



COVID-19 **QUESTIONS?**

CALL

2.1.1



Or visit **nh.gov/covid19**

COVID-19 specific call-takers are available Monday through Friday 8am-7pm and Saturdays 8am-5pm.
2-1-1 NH is available 24/7.

STAY INFORMED

For up-to-the-minute updates on #COVID19
in New Hampshire, check out:
nh.gov/covid19