



New Hampshire State Health Assessment and State Health Improvement Plan Advisory Council

May 21, 2021



Meeting Hygiene

- Be present
- Assume good intentions and take responsibility for impact (ouch and oops)
- Be able to express as much vulnerability as you are able to offer — It's ok to be raggedy
- Be open to another perspective
- Be ready to actively listen
- Expect and accept non-closure — we are a work in progress
- Honor Confidentiality
- Step Up/Step Back (3-4 voices before me)

Endowment for Health” Race & Equity in New Hampshire: Building Foundations for the Future.” <http://www.endowmentforhealth.org/what-we-fund/advancing-health-equity-for-racial-ethnic-and-language-minorities/symposium-on-race-and-equity-in-nh>



SHA Vision and Clarifying Statements

All people in NH have equitable opportunity to flourish and achieve optimal mental, physical, social, spiritual, and emotional wellness.

- Equity is shaped at state and local levels such that individuals and communities have equitable access to opportunities
- Wellness happens where people live, learn, work, and play
- People include individuals and families across the lifespan



Agenda

1. Welcome and *Virtual* Hellos
2. Approval of Minutes
3. Health Care Services Assessment Subcommittee Formation
4. Subcommittee on Community Engagement
5. Domain 1: Access to Opportunity – Housing and Domain 2:
Community Discussion
6. Public Comment

A large, dark blue ink splatter or blotch is centered on a white background. The splatter has irregular, feathered edges and contains several smaller, lighter blue spots. The text is centered within the dark blue area.

Community Engagement
Subcommittee:
PRELIMINARY Survey
Analysis

NH SHA/SHIP



Question 6: Services or Resources Needed or Received in the Last Year

Services or resources needed or received in the last year	Yes, services/resources were needed or received	No, services/resources were not needed or received
Health insurance	61.8%	38.2%
Reliable internet	56.3%	43.7%
Dental health care	52.7%	47.3%
Health care services	51.2%	48.8%
Dental insurance	44.9%	55.1%
Healthy food options	41.0%	59.0%
Mental health services	25.2%	74.8%
Facilities for physical activity	23.1%	76.9%
Job opportunities	20.3%	79.7%



Question 6: Services or Resources Needed or Received in the Last Year, Cont.

Services or resources needed or received in the last year	Yes, services/resources were needed or received	No, services/resources were not needed or received
Education	15.7%	84.3%
Safe housing	12.9%	87.1%
I did not use any of these	12.1%	87.9%
Community supports and services (meal support, etc.)	7.4%	92.6%
Services for people living with disabilities	7.1%	92.9%
Public transportation options	6.7%	93.3%
Services for older adults	6.2%	93.8%
Child Care	6.0%	94.0%
Substance use and addiction services	3.8%	96.2%

Question 6.
 Services or
 Resources
 Needed or
 Received in the
 Last Year

Reliable Internet

Reliable Internet

Responses by County

County	Yes, services/resources were needed or received
Belknap	29.6%
Carroll	41.8%
Cheshire	66.3%
Coos	82.1%
Grafton	73.8%
Hillsborough	54.7%
Merrimack	49.7%
Rockingham	58.3%
Strafford	51.2%
Sullivan	73.1%

Responses by Ethnicity

Ethnicity	Yes, services/resources were needed or received
Hispanic or Latino	47.9%
Not Hispanic or Latino	56.8%

Healthy Food Options

Responses by County

County	Yes, services/resources were needed or received
Belknap	65.4%
Carroll	60.0%
Cheshire	35.7%
Coos	12.7%
Grafton	50.5%
Hillsborough	33.7%
Merrimack	40.8%
Rockingham	45.9%
Strafford	39.4%
Sullivan	46.2%

Responses by Ethnicity

Ethnicity	Yes, services/resources were needed or received
Hispanic or Latino	25.5%
Not Hispanic or Latino	41.6%

Question 6.
Services or
Resources
Needed or
Received in the
Last Year

Healthy Food
Options

Facilities for Physical Activity

Responses by County

County	Yes, services/resources were needed or received
Belknap	18.5%
Carroll	25.9%
Cheshire	16.3%
Coos	0.0%
Grafton	13.9%
Hillsborough	22.6%
Merrimack	34.1%
Rockingham	25.4%
Strafford	24.2%
Sullivan	31.4%

Responses by Race

Race	Yes, services/resources were needed or received
White Alone	21.3%
Not White Alone (Other or multiple races)	41.6%

Question 6.
Services or
Resources
Needed or
Received in the
Last Year

Facilities for
Physical Activity

Question 6.
Services or
Resources
Needed or
Received in the
Last Year

Safe Housing

Safe Housing

Responses by County

County	Yes, services/resources were needed or received
Belknap	11.1%
Carroll	20.0%
Cheshire	7.1%
Coos	3.6%
Grafton	10.2%
Hillsborough	7.3%
Merrimack	9.6%
Rockingham	24.8%
Strafford	8.5%
Sullivan	28.8%

Responses by Ethnicity

Ethnicity	Yes, services/resources were needed or received
Hispanic or Latino	4.2%
Not Hispanic or Latino	13.4%

Question 6.
Services or
Resources
Needed or
Received in the
Last Year

Community
Supports and
Services

Responses by County

County	Yes, services/resources were needed or received
Belknap	7.4%
Carroll	18.2%
Cheshire	4.1%
Coos	0.0%
Grafton	1.9%
Hillsborough	4.0%
Merrimack	16.8%
Rockingham	5.2%
Strafford	18.2%
Sullivan	2.0%

Community Supports and Services

Responses by Ethnicity

Ethnicity	Yes, services/resources were needed or received
Hispanic or Latino	7.0%
Not Hispanic or Latino	14.6%

Responses by Race

Race	Yes, services/resources were needed or received
White Alone	6.1%
Not White Alone (Other or multiple races)	23.8%

Question 6.
Services or
Resources
Needed or
Received in the
Last Year

Community
Supports and
Services

Services for People Living with Disabilities

Question 6.
 Services or
 Resources
 Needed
 or Received in
 the Last Year

Services for
 People Living
 with Disabilities

Responses by County

County	Yes, services/resources were needed or received
Belknap	45.7%
Carroll	0.0%
Cheshire	0.0%
Coos	1.8%
Grafton	6.5%
Hillsborough	5.7%
Merrimack	5.6%
Rockingham	4.1%
Strafford	3.0%
Sullivan	25.5%

Responses by Ethnicity

Ethnicity	Yes, services/resources were needed or received
Hispanic or Latino	14.6%
Not Hispanic or Latino	6.7%

Responses by Gender Identity

Gender Identity	Yes, services/resources were needed or received
Male	2.7%
Female	11.0%

Public Transportation

Responses by County

County	Yes, services/resources were needed or received
Belknap	42.7%
Carroll	5.6%
Cheshire	3.1%
Coos	0.0%
Grafton	7.4%
Hillsborough	4.3%
Merrimack	4.5%
Rockingham	3.3%
Strafford	9.1%
Sullivan	5.8%

Responses by Gender Identity

Gender Identity	Yes, services/resources were needed or received
Male	3.0%
Female	8.7%

Question 6.
Services or
Resources
Needed or
Received in the
Last Year

Public Transportation

Public Transportation

Question 6.
Services or
Resources
Needed or
Received in the
Last Year

Public Transportation

Responses by Ethnicity

Ethnicity	Yes, services/resources were needed or received
Hispanic or Latino	21.3%
Not Hispanic or Latino	6.2%

Responses by Race

Race	Yes, services/resources were needed or received
White Alone	5.9%
Not White Alone (Other or multiple races)	18.8%

Services for Older Adults

Responses by County

County	Yes, services/resources were needed or received
Belknap	0.0%
Carroll	5.5%
Cheshire	3.1%
Coos	10.7%
Grafton	7.4%
Hillsborough	6.9%
Merrimack	7.3%
Rockingham	3.3%
Strafford	5.5%
Sullivan	27.5%

Question 6.
Services or
Resources
Needed
or Received in
the Last Year

Services for Older
Adults

Question 6.
 Services or
 Resources
 Needed
 or Received in
 the Last Year
 Child Care

Child Care

Responses by Ethnicity

Ethnicity	Yes, services/resources were needed or received
Hispanic or Latino	14.6%
Not Hispanic or Latino	5.6%

Responses by Race

Race	Yes, services/resources were needed or received
White Alone	5.1%
Not White Alone (Other or multiple races)	19.0%



Question 7o: Experience with Reliable Internet

Among people who said “Yes” to needing or receiving Reliable Internet:

Reliable Internet Experience	Selected (‘Yes’)	Not selected (‘No’)
I have no challenges with access	635 (70.1%)	270 (29.9%)
I don’t know how to find what I need	4 (0.4%)	901 (99.6%)
Does not meet my needs	66 (7.3%)	839 (92.7%)
I don’t qualify for assistance	19 (2.1%)	886 (97.9%)
It takes too long to receive services	47 (5.2%)	858 (94.8%)
Costs are too high	120 (13.2%)	785 (86.8%)
Not high quality	91 (10.1%)	814 (89.9%)
Too far away	1 (0.1%)	904 (99.9%)
I cannot get transportation to receive services	1 (0.1%)	904 (99.9%)
Not available in my language	0 (0.0%)	905 (100.0%)
I don’t feel comfortable communicating my needs	9 (1.0%)	896 (99.0%)

(905 participants responded to this question)



Question 7k: Experience with Healthy Food Options

Among people who said “Yes” to needing or receiving Healthy Food Options:

Healthy Food Options Experience	Selected (‘Yes’)	Not selected (‘No’)
I have no challenges with access	476 (71.7%)	188 (28.3%)
I don’t know how to find what I need	23 (3.4%)	642 (96.6%)
Does not meet my needs	8 (1.2%)	656 (98.8%)
I don’t qualify for assistance	29 (4.3%)	635 (95.7%)
It takes too long to receive services	2 (0.3%)	662 (99.7%)
Costs are too high	115 (17.3%)	549 (82.7%)
Not high quality	48 (7.3%)	616 (92.7%)
Too far away	15 (2.3%)	649 (97.7%)
I cannot get transportation to receive services	0 (0%)	664 (100%)
Not available in my language	0 (0%)	664 (100%)
I don’t feel comfortable communicating my needs	7 (1%)	657 (99%)

(664 participants responded to this question)



Question 7q: Experience with Facilities for Physical Activity

Among people who said “Yes” to needing or receiving Facilities for Physical Activity:

Physical Activity Facilities Experience	Selected (‘Yes’)	Not selected (‘No’)
I have no challenges with access	227 (64.2%)	126 (35.8%)
I don’t know how to find what I need	30 (8.5%)	323 (91.5%)
Does not meet my needs	25 (7%)	328 (93%)
I don’t qualify for assistance	6 (1.7%)	347 (98.3%)
It takes too long to receive services	16 (4.5%)	337 (95.5%)
Costs are too high	38 (10.8%)	315 (89.2%)
Not high quality	9 (2.4%)	345 (97.6%)
Too far away	18 (5%)	336 (95%)
I cannot get transportation to receive services	6 (1.7%)	347 (98.3%)
Not available in my language	0 (0%)	353 (100%)
I don’t feel comfortable communicating my needs	13 (3.6%)	340 (96.4%)

(353 participants responded to this question)



Question 7n: Experience with Safe Housing

Among people who said “Yes” to needing or receiving Safe Housing:

Safe Housing Experience	Selected (‘Yes’)	Not selected (‘No’)
I have no challenges with access	159 (75.9%)	50 (24.1%)
I don’t know how to find what I need	0 (0%)	209 (100%)
Does not meet my needs	1 (0.7%)	208 (99.3%)
I don’t qualify for assistance	6 (3%)	203 (97%)
It takes too long to receive services	5 (2.5%)	204 (97.5%)
Costs are too high	7 (3.5%)	202 (96.5%)
Not high quality	0 (0%)	209 (100%)
Too far away	5 (2.5%)	204 (97.5%)
I cannot get transportation to receive services	0 (0%)	209 (100%)
Not available in my language	0 (0%)	664 (100%)
I don’t feel comfortable communicating my needs	39 (18.6%)	170 (81.4%)

(209 participants responded to this question)



Question 7I: Experience with Community Supports and Services

Among people who said “Yes” to needing or receiving Community Supports and Services:

Community Supports and Services Experience	Selected ('Yes')	Not selected ('No')
I have no challenges with access	62 (52.4%)	56 (47.6%)
I don't know how to find what I need	10 (8.8%)	108 (91.2%)
Does not meet my needs	37 (31.2%)	81 (68.8%)
I don't qualify for assistance	6 (4.8%)	113 (95.2%)
It takes too long to receive services	5 (4.5%)	113 (95.5%)
Costs are too high	7 (6.2%)	111 (93.8%)
Not high quality	7 (6.2%)	111 (93.8%)
Too far away	12 (10.2%)	106 (89.8%)
I cannot get transportation to receive services	4 (3.5%)	114 (96.5%)
Not available in my language	0 (0.0%)	118 (100.0%)
I don't feel comfortable communicating my needs	12 (10.2%)	106 (89.8%)

(118 participants responded to this question)



Question 7h: Experience with Services for People Living with Disabilities

Among people who said “Yes” to needing or receiving Services for People Living with Disabilities:

Services for People Living with Disabilities Experience	Selected ('Yes')	Not selected ('No')
I have no challenges with access	56 (50.6%)	55 (49.4%)
I don't know how to find what I need	29 (26.5%)	82 (73.5%)
Does not meet my needs	7 (6.6%)	104 (93.4%)
I don't qualify for assistance	31 (27.5%)	81 (72.5%)
It takes too long to receive services	5 (4.9%)	106 (95.1%)
Costs are too high	9 (8.0%)	102 (92.0%)
Not high quality	10 (9.4%)	101 (90.6%)
Too far away	1 (0.7%)	110 (99.3%)
I cannot get transportation to receive services	4 (3.7%)	107 (96.3%)
Not available in my language	0 (0.0%)	111 (100.0%)
I don't feel comfortable communicating my needs	17 (15.1%)	94 (84.9%)

(111 participants responded to this question)



Question 7p: Experience with Public Transportation

Among people who said “Yes” to needing or receiving Public Transportation:

Public Transportation Experience	Selected ('Yes')	Not selected ('No')
I have no challenges with access	30 (27.4%)	79 (72.6%)
I don't know how to find what I need	13 (11.6%)	96 (88.4%)
Does not meet my needs	25 (22.7%)	84 (77.3%)
I don't qualify for assistance	4 (4.1%)	104 (95.9%)
It takes too long to receive services	2 (1.9%)	106 (98.1%)
Costs are too high	0 (0%)	109 (100%)
Not high quality	6 (5.5%)	103 (94.5%)
Too far away	28 (26.0%)	80 (74.0%)
I cannot get transportation to receive services	43 (39.4%)	66 (60.6%)
Not available in my language	0 (0%)	109 (100%)
I don't feel comfortable communicating my needs	1 (0.3%)	108 (99.7%)

(109 participants responded to this question)



Question 7m: Experience with Services for Older Adults

Among people who said “Yes” to needing or receiving Services for Older Adults:

Services for Older Adults Experience	Selected ('Yes')	Not selected ('No')
I have no challenges with access	47 (56.0%)	37 (44.0%)
I don't know how to find what I need	21 (24.9%)	64 (75.1%)
Does not meet my needs	7 (7.7%)	78 (92.3%)
I don't qualify for assistance	7 (8.4%)	77 (91.6%)
It takes too long to receive services	82 (97.5%)	2 (2.5%)
Costs are too high	7 (8.4%)	77 (91.6%)
Not high quality	1 (0.8%)	84 (99.2%)
Too far away	4 (4.3%)	81 (95.7%)
I cannot get transportation to receive services	1 (1.5%)	83 (98.5%)
Not available in my language	0 (0.0%)	85 (100.0%)
I don't feel comfortable communicating my needs	3 (3.7%)	81 (96.3%)

(85 participants responded to this question)



Question 7a: Experience with Child Care

Among people who said “Yes” to needing or receiving Child Care:

Child Care Experience	Selected (‘Yes’)	Not selected (‘No’)
I have no challenges with access	35 (38.6%)	56 (61.4%)
I don’t know how to find what I need	7 (8.0%)	84 (92.0%)
Does not meet my needs	25 (27.2%)	67 (72.8%)
I don’t qualify for assistance	3 (3.4%)	88 (96.6%)
It takes too long to receive services	13 (14.4%)	78 (85.6%)
Costs are too high	28 (30.3%)	64 (69.7%)
Not high quality	11 (11.8%)	81 (88.2%)
Too far away	7 (7.6%)	85 (92.4%)
I cannot get transportation to receive services	0 (0.0%)	91 (100.0%)
Not available in my language	0 (0.0%)	91 (100.0%)
I don’t feel comfortable communicating my needs	3 (3.4%)	88 (96.6%)

(91 participants responded to this question)



Question 9a: Experience with Recreational Spaces

Among people who said “Yes” to needing or receiving Recreational Spaces:

Recreational Spaces Experience	Selected (‘Yes’)	Not selected (‘No’)
I have no challenges with access	227 (64.2%)	126 (35.8%)
I don’t know how to find what I need	30 (8.5%)	323 (91.5%)
Does not meet my needs	25 (7%)	328 (93%)
I don’t qualify for assistance	6 (1.8%)	347 (98.2%)

(1,607 participants responded to this question)



Question 13: Highest Priority Health and Wellness Issues

Priority Areas	Low to No Priority	Medium Priority	High or Essential Priority
Violent crime	28.0%	22.3%	49.7%
Access to parks, green space, and other outdoor activities	27.8%	28.9%	43.4%
Property crime, burglary, vandalism	26.6%	31.1%	42.2%
Access to reliable and affordable public transportation	27.5%	31.1%	41.1%
Too much construction where I live	75.9%	17.3%	6.8%



SHA Data Collection Domains and Subcategories

- Demographics
- Domain 1: Access to Opportunity
 - Subcategory: Education
 - Subcategory: Fiscal Health
 - Subcategory: Housing
- Domain 2: Community
 - Subcategory: Community Assets and Resources
 - Subcategory: Commuting Patterns
 - Subcategory: Crime
 - Subcategory: Environmental Health
 - Subcategory: Infrastructure
- Domain 3: Health Status and Outcomes
 - Subcategory: Access and Utilization
 - Subcategory: Birth Outcomes
 - Subcategory: Cost of Care
 - Subcategory: Health Outcomes
 - Subcategory: Healthy Living
 - Subcategory: Vaccination Rates
- Domain 4: Social Connectedness
 - Subcategory: Age Friendly Community
 - Subcategory: Civic Engagement
 - Subcategory: Spirituality



Housing Affordability, Housing as Income %

	Median Home Value	% Housing Cost Above 30% of Household Income	% Rent Above 30% of Household Income
New Hampshire	\$261,040	31.0%	44.0%
Belknap County	\$228,684	31.9%	44.8%
Carroll County	\$235,922	29.8%	44.1%
Cheshire County	\$193,912	32.9%	44.9%
Coos County	\$130,429	28.2%	37.6%
Grafton County	\$239,529	31.1%	43.1%
Hillsborough County	\$271,473	32.0%	45.5%
<i>Nashua city</i>	<i>\$257,700</i>	<i>34.6%</i>	<i>45.6%</i>
<i>Manchester city</i>	<i>\$217,100</i>	<i>38.6%</i>	<i>46.9%</i>
Merrimack County	\$235,569	31.3%	43.8%
Rockingham County	\$325,789	29.7%	43.3%
Strafford County	\$233,880	32.1%	45.7%
Sullivan County	\$190,284	34.6%	44.2%

Source: DPHS WISDOM Dashboards, IN DEVELOPMENT; Data 2014-2018



Housing Affordability, by County

County	% Housing Cost Above 30% of Household Income	Range, by Town within County
Belknap	32%	19% (Gilford) – 39% (Tilton)
Carroll	30%	17% (Jackson) – 35% (Ossipee, Wolfeboro)
Cheshire	33%	18% (Harrisville) – 41% (Winchester)
Coos	28%	16% (Gorham) – 39% (Whitefield)
Grafton	31%	18% (Lyman) – 40% (Haverhill)
Hillsborough	32%	19% (Francestown) – 29% (Manchester)
Merrimack	31%	14% (Hill) – 43% (Pittsfield)
Rockingham	30%	17% (Newton) – 37% (Derry)
Strafford	32%	20% (Madbury) – 42% (Durham)
Sullivan	35%	21% (Acworth) - 39% (Newport)

Source: DPHS WISDOM Dashboards, IN DEVELOPMENT; Data 2014-2018



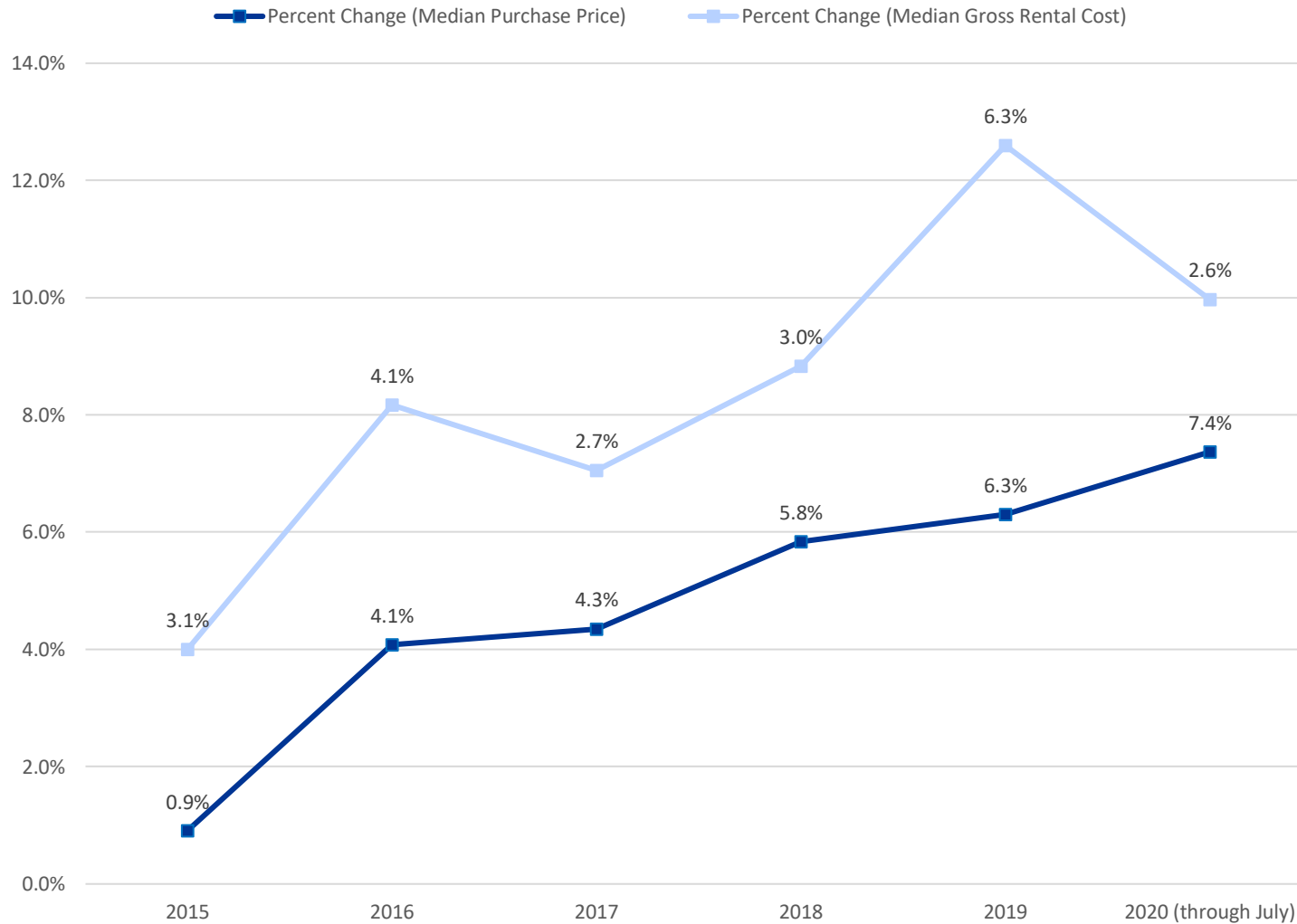
Housing Affordability, Income to Cost

	Median Household Income, 2015-2019	Median Purchase Price (Jan.-June 2020)	Median Rent
New Hampshire	\$76,768	\$289,933	\$1,413
Belknap County	\$69,447	\$250,000	\$1,145
Carroll County	\$63,153	\$240,000	\$1,066
Cheshire County	\$64,751	\$223,600	\$1,118
Coos County	\$47,117	\$140,000	\$888
Grafton County	\$63,389	\$215,000	\$1,307
Hillsborough County	\$81,460	\$310,000	\$1,534
Merrimack County	\$75,737	\$266,000	\$1,273
Rockingham County	\$93,756	\$375,000	\$1,623
Strafford County	\$72,960	\$273,500	\$1,291
Sullivan County	\$71,312	\$189,500	\$1,068

Source: New Hampshire Housing (<http://nhhousingdata.nhhfa.org/diveport#page=a0036>)



Housing Affordability



Median Gross Rental Cost		
Year	Percent Change	Monthly Cost
2020	2.6%	\$1,283
2019	6.3%	\$1,251
2018	3.0%	\$1,177
2017	2.7%	\$1,143
2016	4.1%	\$1,113
2015	3.1%	\$1,069

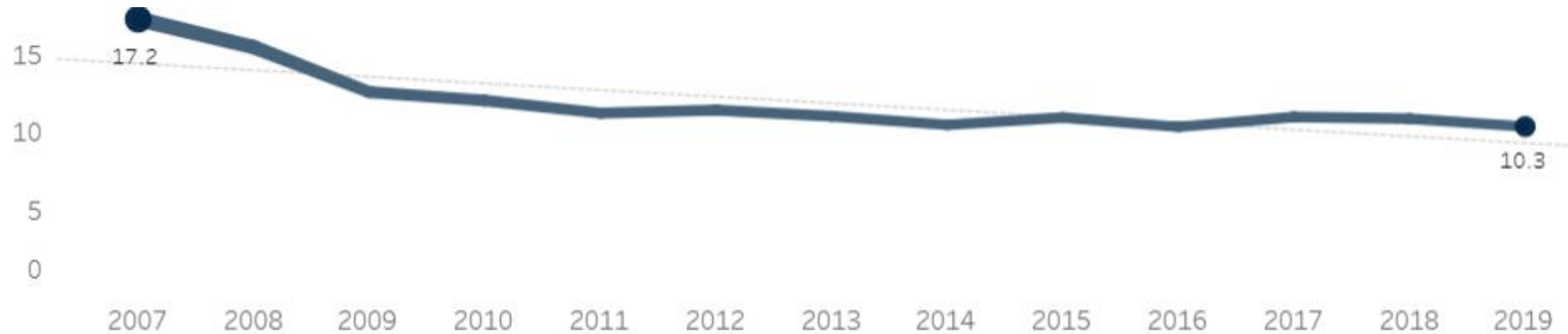
Median Gross Purchase Cost		
Year	Percent Change	Cost
2020 (through July)	7.4%	\$289,900
2019	6.3%	\$270,000
2018	5.8%	\$254,000
2017	4.3%	\$240,000
2016	4.1%	\$230,000
2015	0.9%	\$221,000

Source: New Hampshire Housing Finance Authority



Homelessness

Rate of people who are homeless per 10,000 people, NH, 2019



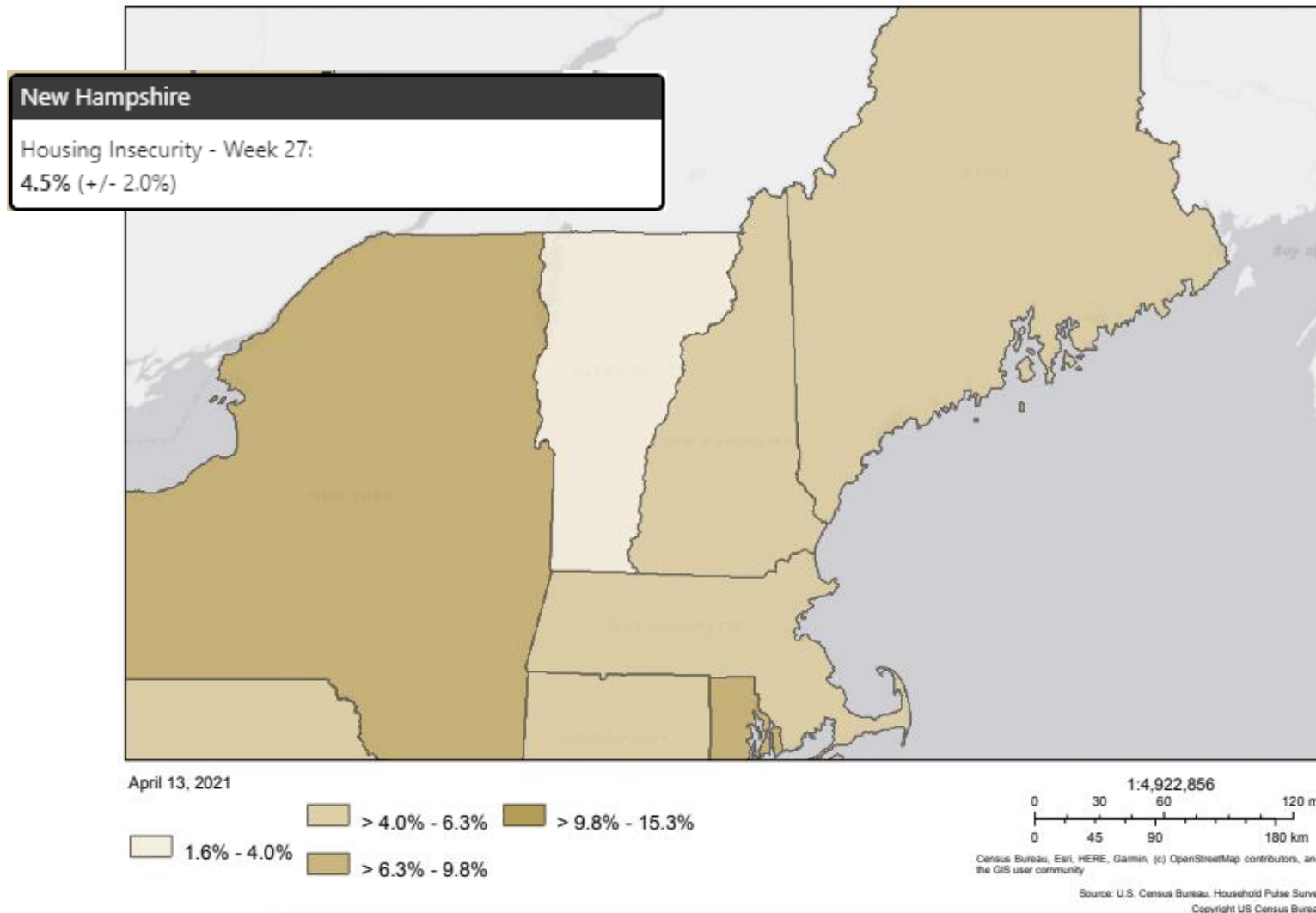
- Emergency Shelters across the State serve more than 700 people (individuals and families) on any given night in New Hampshire.
- The National Alliance to End Homelessness reports that 1,396 people were homeless on any given night in 2019

<https://endhomelessness.org/homelessness-in-america/homelessness-statistics/state-of-homelessness-dashboards/?State=New%20Hampshire>



COVID Impact: Housing Insecurity

Housing Insecurity, Household Pulse Survey: Week 27



Percentage of adults who missed last month's rent or mortgage payment, or who have slight or no confidence that their household can pay next month's rent or mortgage on time.

Source: U.S. Census Bureau, Household Pulse Survey (March 17-29, 2021)

Community

The Community section of the SHA describes characteristics of the communities in which the people of New Hampshire live, learn, work, and play. This includes the infrastructure and assets, as well as how people interact and feel about their communities.

Includes: Physical infrastructure, social service infrastructure, safety, environment, and transportation.


Physical Infrastructure – State Park System

https://www.nhstateparks.org/getmedia/d_a2da82f-6863-4b47-abe9-cba9ebde62ba/NH_State_Park_Map.pdf

WELCOME TO NEW HAMPSHIRE STATE PARKS

Escape from the hectic pace of everyday living and enjoy one of New Hampshire's State Park properties. Just think: Wherever you are in New Hampshire, you're probably no more than an hour from a New Hampshire State Park property. Our state parks, historic sites, trails, and waysides are found in a variety of settings, ranging from the white sand and surf of the Seacoast to the cool lakes and ponds inland and the inviting mountains scattered all over the state.

What's your thing? Swimming, fishing, or hiking? Camping, picnicking, or ATVing? Whatever your preference in recreation, our state parks have something for you. And best of all, you'll find that state parks offer some of the best buys for your recreation dollar. So pack your car, grab your map, and bring your family along for some fun in New Hampshire's State Parks!

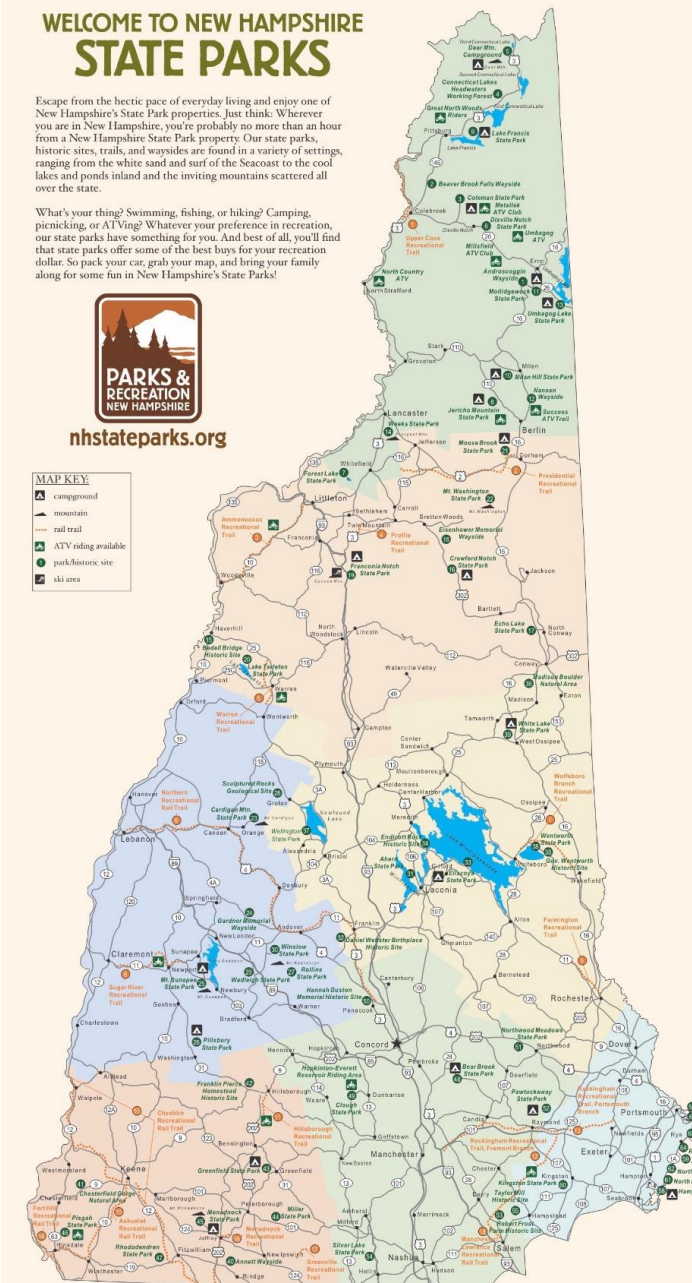


PARKS & RECREATION
NEW HAMPSHIRE

nhstateparks.org

MAP KEY

- campground
- mountain
- trail
- ATV riding available
- park/historic site
- ski area



New Hampshire State Parks Amenities at a Glance

Park	Barren	Beaver	Bird	Boat Launch	Camping	Fishing	Hiking	Picnicking	Swimming	Water Use
Great North Woods Region										
Androscoggin Wayside										
Beaver Brook Falls Wayside										
Colman State Park										
Combsville Lake Herbsters Working Forest										
Deer Mountain Campground										
Dixville Notch State Park										
Forest Lake State Park										
Green Mountains State Park										
Lake Francis State Park										
Millin Hill State Park										
Madawaski State Park										
Namur Wayside										
Unabago Lake State Park										
Whitt's State Park										
White Mountains Region										
Beckel Bridge Historic Site										
Crawford Notch State Park										
Fish Lake State Park										
Eisenhower Memorial Wayside										
Franconia Notch State Park										
Lake Umbagog State Park										
Moose Brook State Park										
Mount Washington State Park										
Dartmouth/Lake Sunapee Region										
Carillon Mountain State Park										
Caribou Memorial Wayside										
Mount Sunapee State Park										
Pillsbury State Park										
Redlin State Park										
Sculptured Rocks Geological Site										
Walleigh State Park										
Windfall State Park										
Lower Region										
Albemarle State Park										
David Webster Burleigh Historic Site										
Ellisville State Park										
London Rock Historic Site										
Governor Wentworth Historic Site										
Madison Boulder Natural Area										
Wilmington State Park										
Wintworth State Park										
White Lake State Park										
Monadnock Region										
Assent Wayside										
Chatterfield Gorge Natural Area										
Franklin Pierce Homestead Historic Site										
Greenfield State Park										
Miller State Park										
Monadnock State Park										
Prugh State Park										
Rhododendron State Park										
Merrimack Valley Region										
Bear Brook State Park										
Clough State Park										
Hamal Dawson Memorial Historic Site										
Northwood Meadows State Park										
Powell-Lawry State Park										
Toburn (Four Jans) Historic Site										
Silver Lake State Park										
Taylor Mill Historic Site										
Seacoast Region										
Fort Cassanovala Historic Site										
Fort Snark Historic Site										
Hampson Beach State Park										
Jennings State Beach										
Kingsmen State Park										
North Beach										
North Hampton State Beach										
Olden Point State Park										
Rye Harbor State Park										
Wills Sand State Park										
Wentworth-Goolidge Mansion Historic Site										
White Island Historic Site										

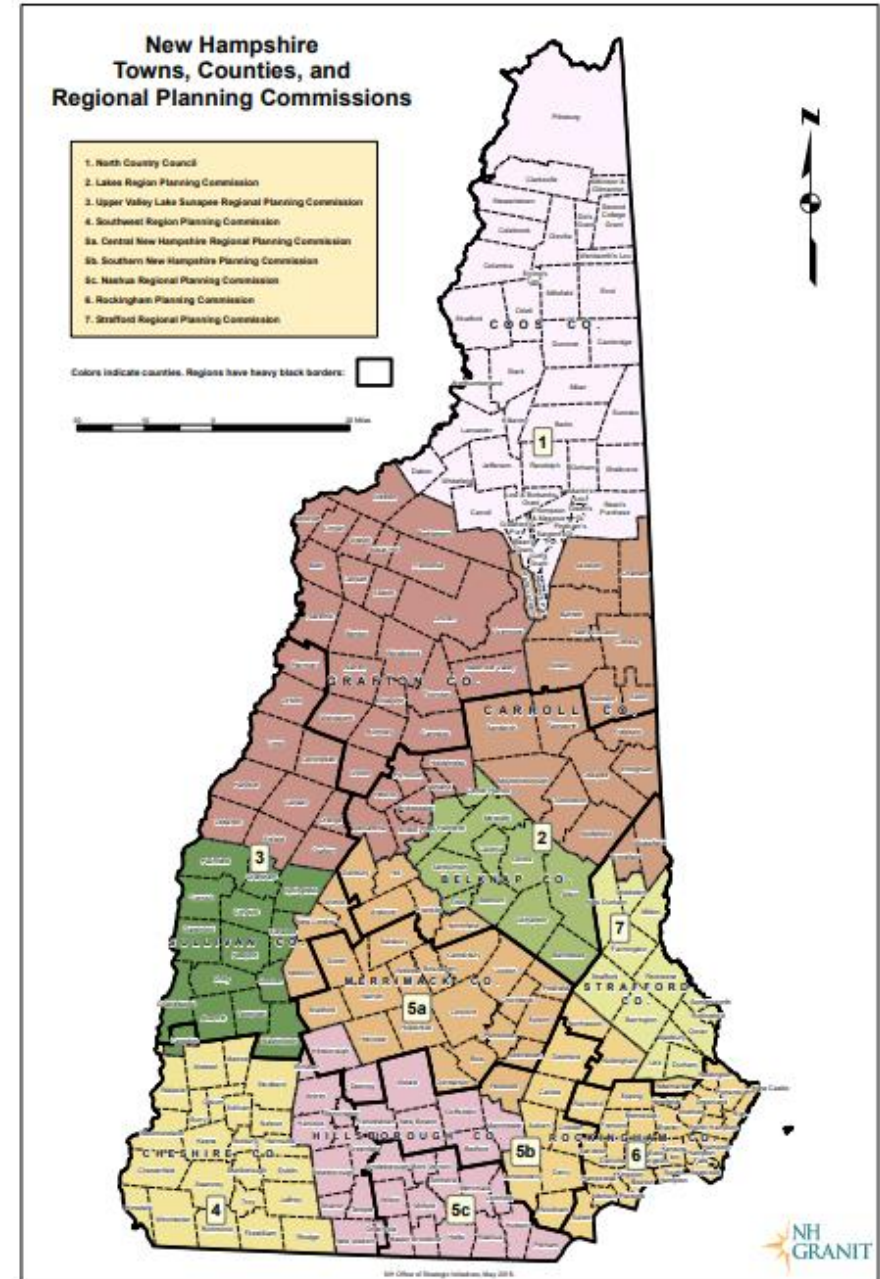
Recreational Rail Trails offer a variety of opportunities. Visit nhrails.org for a list of permitted activities on each trail.

Trail	Miles
Upper Coos Recreational Trail (Colebrook-Beecher Falls)	20.5
Presidential Recreational Rail Trail (Jefferson-Gorham)	68.3
Ammonoosuc Recreational Trail (Woodsville-Littleton)	59.2
Profile Recreational Trail (Bethlehem)	1.5
Warren Recreational Trail (Warren-St. Jerry)	4.0
Northern Recreational Rail Trail (Boscawen-Lebanon)	59.3
Wildboon Branch Recreational Trail (Wildboon/Wildfield)	12.0
Sugar River Recreational Trail (Newport-Claremont)	9.5
Farmington Recreational Trail (Farmington-Rochester)	6.0
Cheshire Recreational Rail Trail (North Wildfire-Tivoliham)	41.0
Hillsborough Recreational Trail (Hillsborough-Bernington)	7.7
Rockingham Recreational Trail, Fremont Branch (Boscawen-Fremont-Route 61-Terry)	18
Rockingham Recreational Trail, Portsmouth Branch (Manchester-Newfields)	25.3
Four Hill Recreational Rail Trail (Hamada)	8.9
Ashford Recreational Rail Trail (Keene-Winchester)	21.0
Monadnock Recreational Trail (Massachusetts Line/Jaffrey)	21.2
Greenfield Recreational Rail (Greenfield)	7.3
Manchester-Leicester Recreational Rail Trail (Salem-Windham)	5.4

Physical Infrastructure - Regional Planning Commissions

Regional Planning Commissions support local municipalities through planning and community development responsibilities, including advising on local ordinances and land use issues; providing professional planning services; helping to secure funds for transportation and infrastructure projects; working to obtain and administer state and federal grants; and reducing local costs through regional coordination and cooperation.

<https://www.nh.gov/osi/resource-library/regional.htm>





Physical Infrastructure - North Country RPC

North Country Council Planning Region

Colebrook Labor Market Area

- Conservation Land
- Water Feature
- Unincorporated Places
- Municipal Boundary
- Major Road

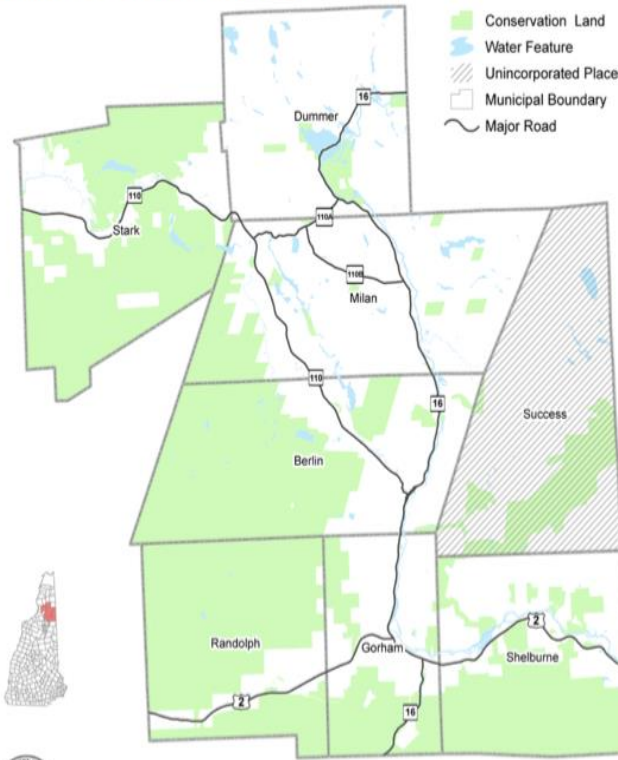


This map is for planning purposes only and may not fully

North Country Council Planning Region

Berlin Labor Market Area

- Conservation Land
- Water Feature
- Unincorporated Places
- Municipal Boundary
- Major Road



This map is for planning purposes only and may not fully

North Country Council Planning Region

Littleton Labor Market Area

- Conservation Land
- Water Feature
- Unincorporated Places
- Municipal Boundary
- Major Road



This map is for planning purposes only and may not fully

http://www.nccouncil.org/wp-content/uploads/2015/04/NCCSCI_1and2_MainBodyofPlan.pdf



Physical Infrastructure - North Country RPC

North Country Council Planning Region

Haverhill Labor Market Area

- Conservation Land
- Water Feature
- Town Boundary
- Major Road

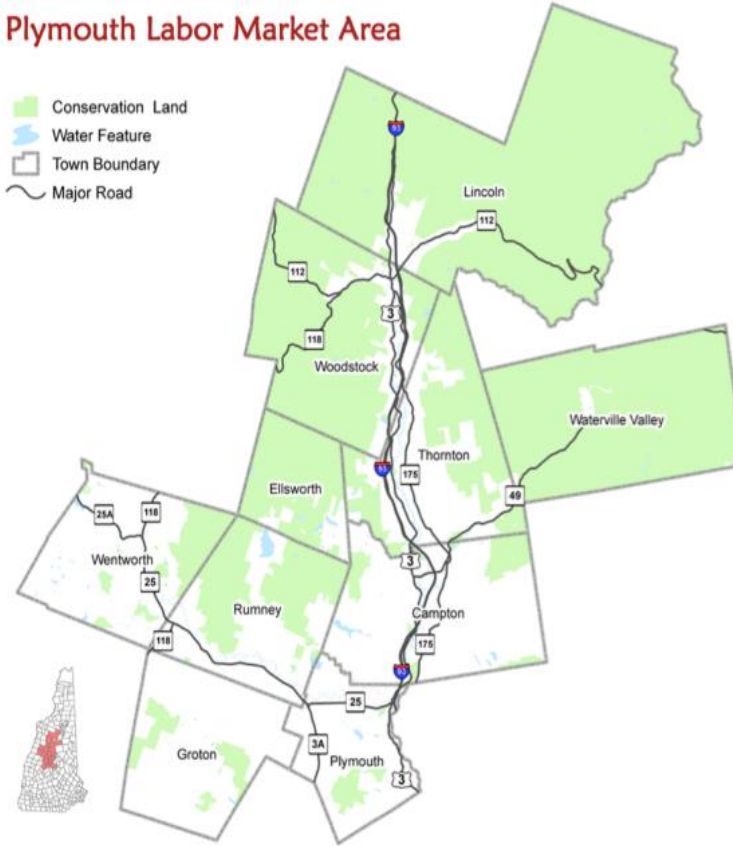


This map is for planning purposes only and may not fully

North Country Council Planning Region

Plymouth Labor Market Area

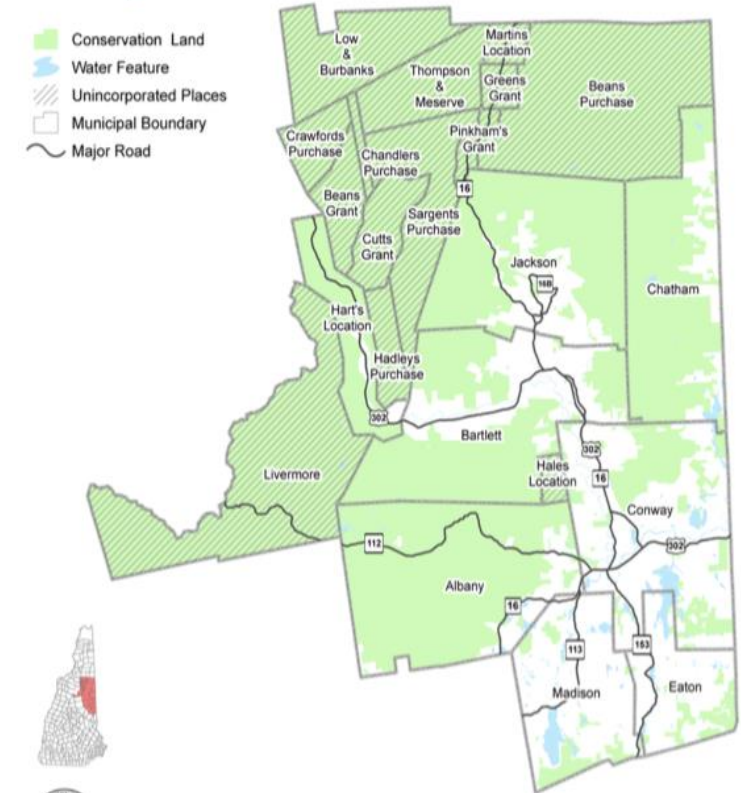
- Conservation Land
- Water Feature
- Town Boundary
- Major Road



North Country Council Planning Region

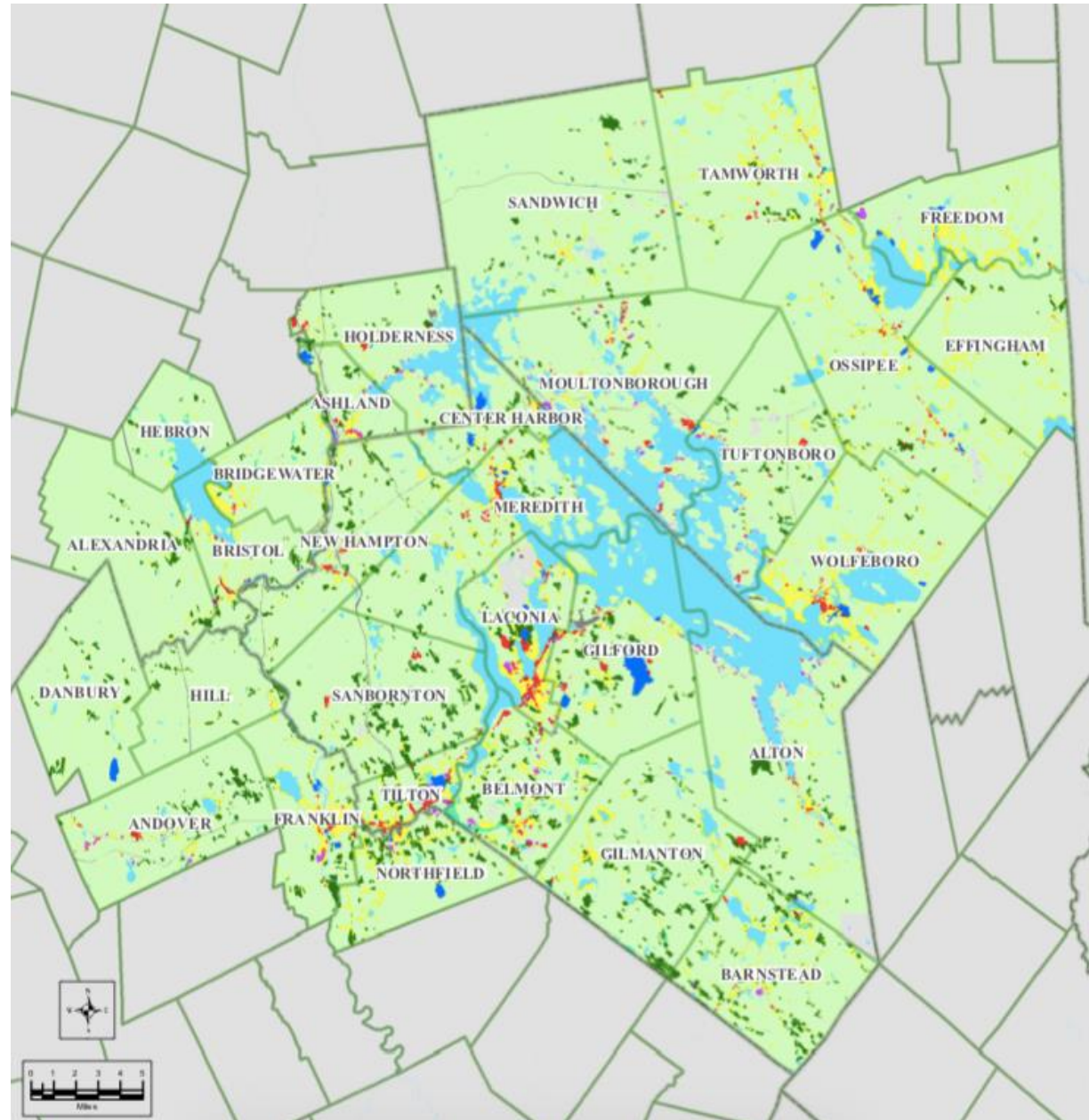
Conway Labor Market Area

- Conservation Land
- Water Feature
- Unincorporated Places
- Municipal Boundary
- Major Road





Physical Infrastructure Lakes Region RPC

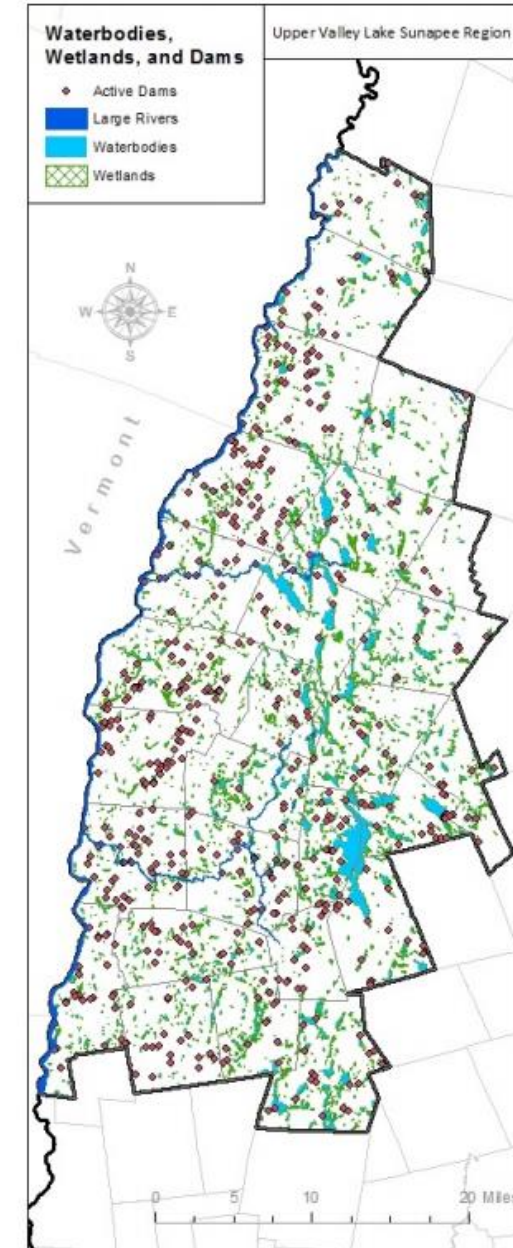


https://www.lakesrpc.org/maps/Map1_Land_Use.pdf



Physical Infrastructure - Upper Valley RPC

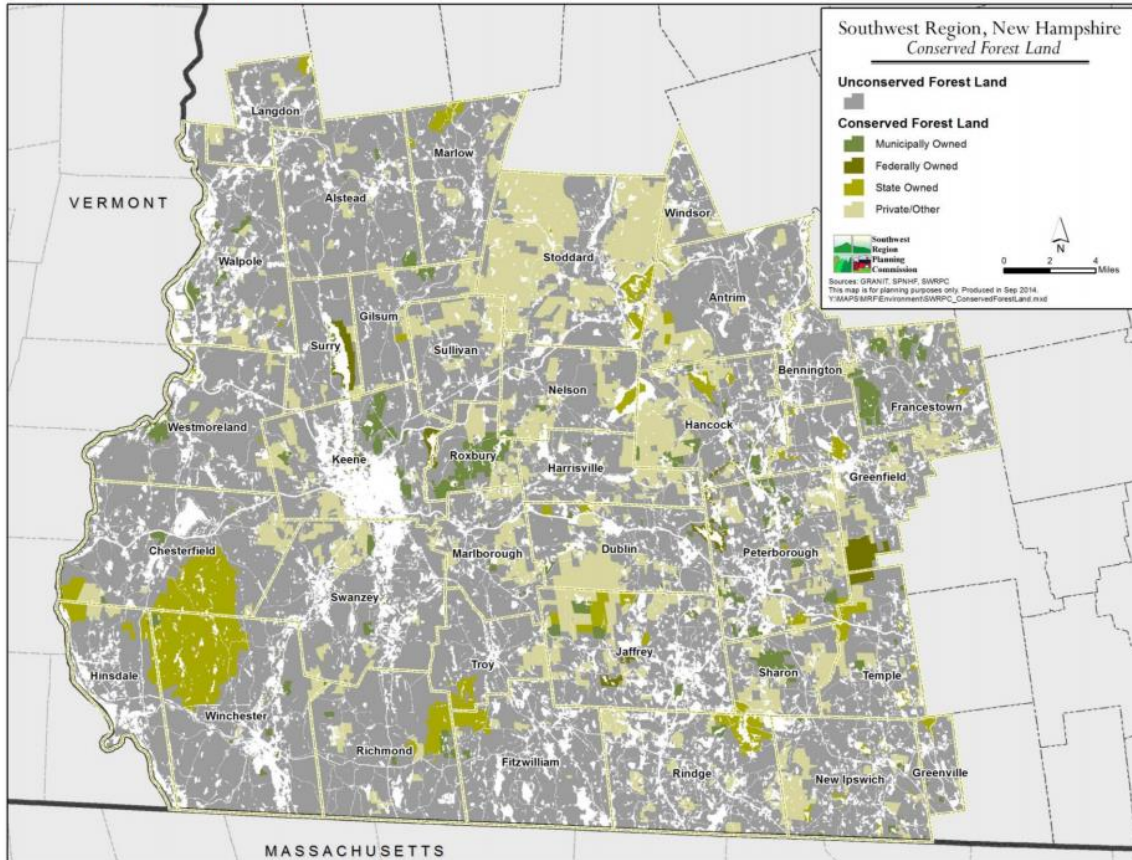
https://regionalplan.uvlsrc.org/files/4514/7077/4741/UVLSRPC_2015RegionalPlan_Complete.pdf



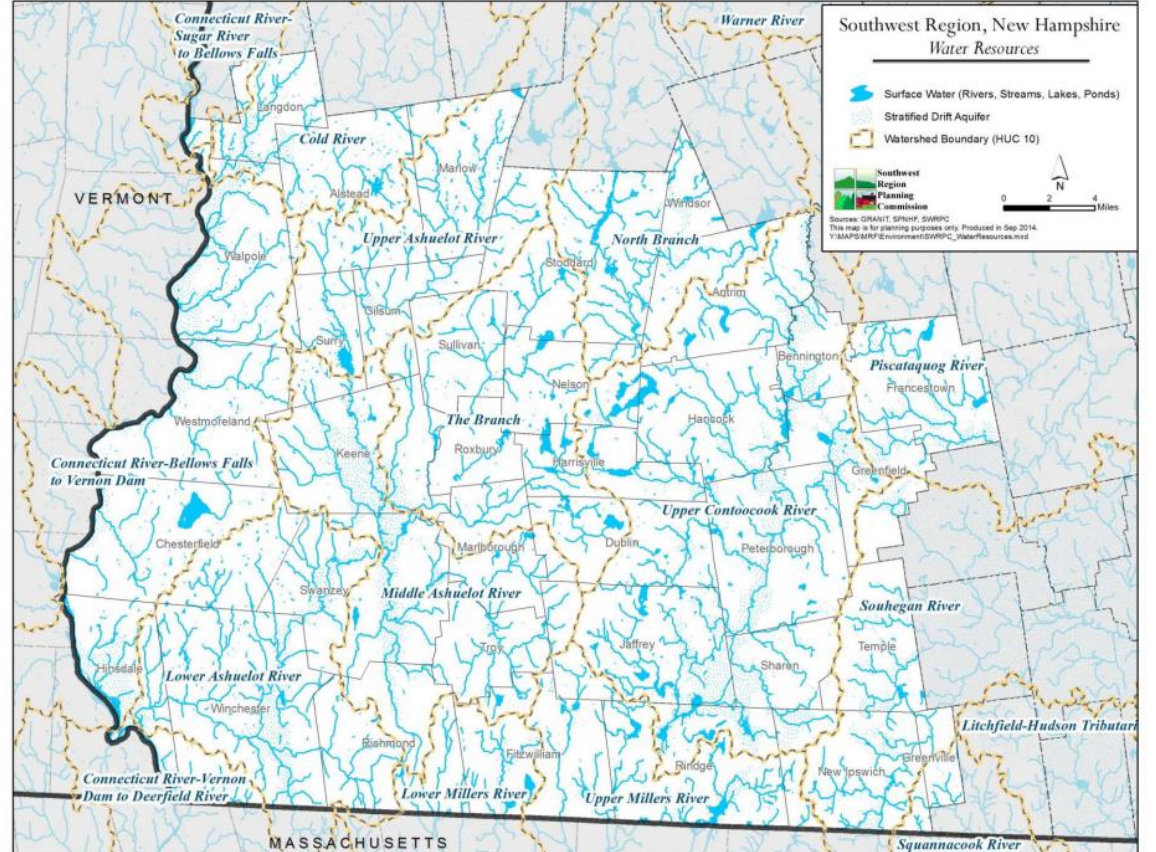


Physical Infrastructure - Southwest RPC

Map 2. Southwest Region Conserved Forest Land



Map 3. Southwest Region Water Resources

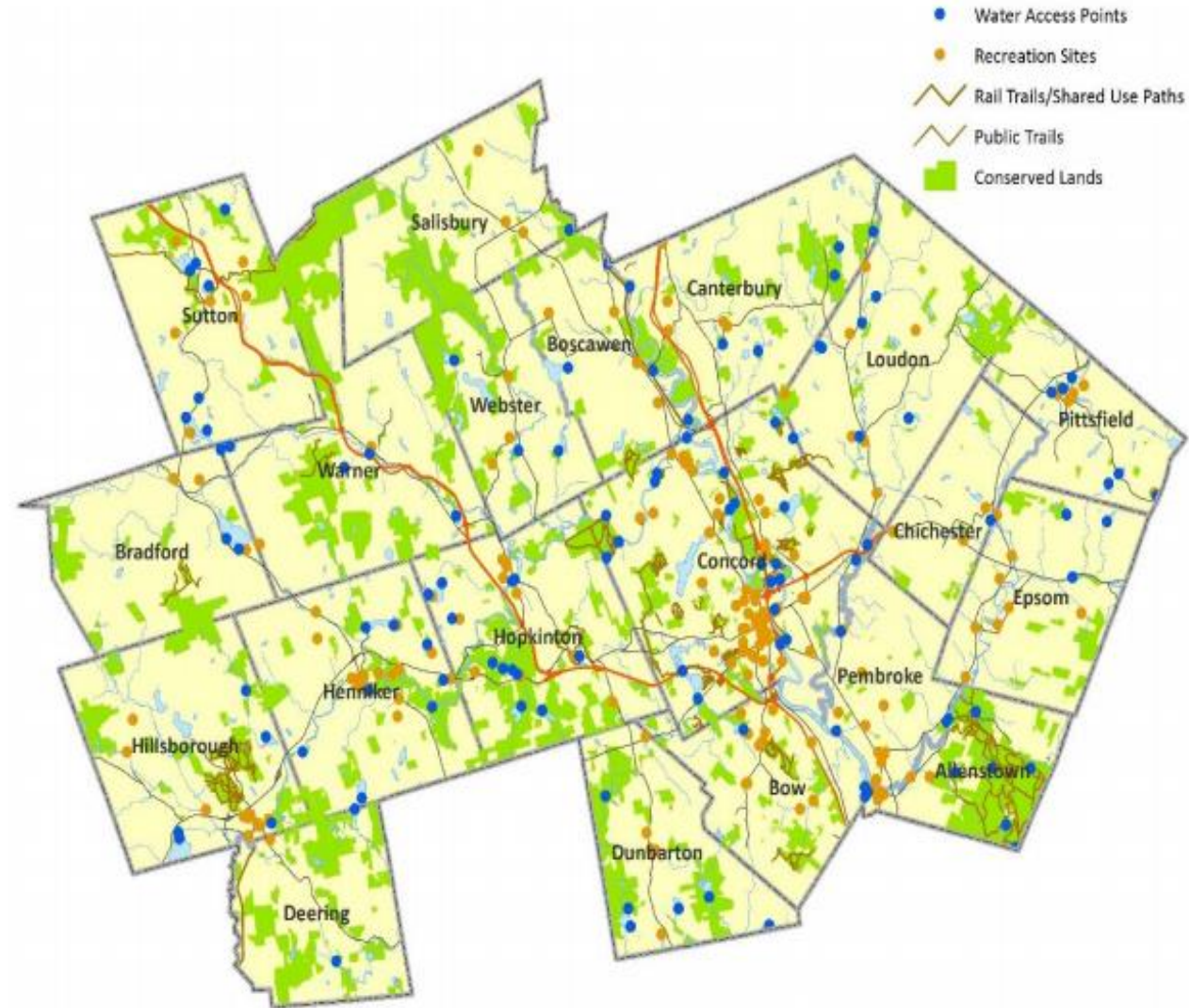


<http://swrpc.org/files/Southwest%20New%20Hampshire%20Natural%20Resources%20Plan%20FINAL.pdf>



Figure 1.7: Open Space Recreation Access Sites

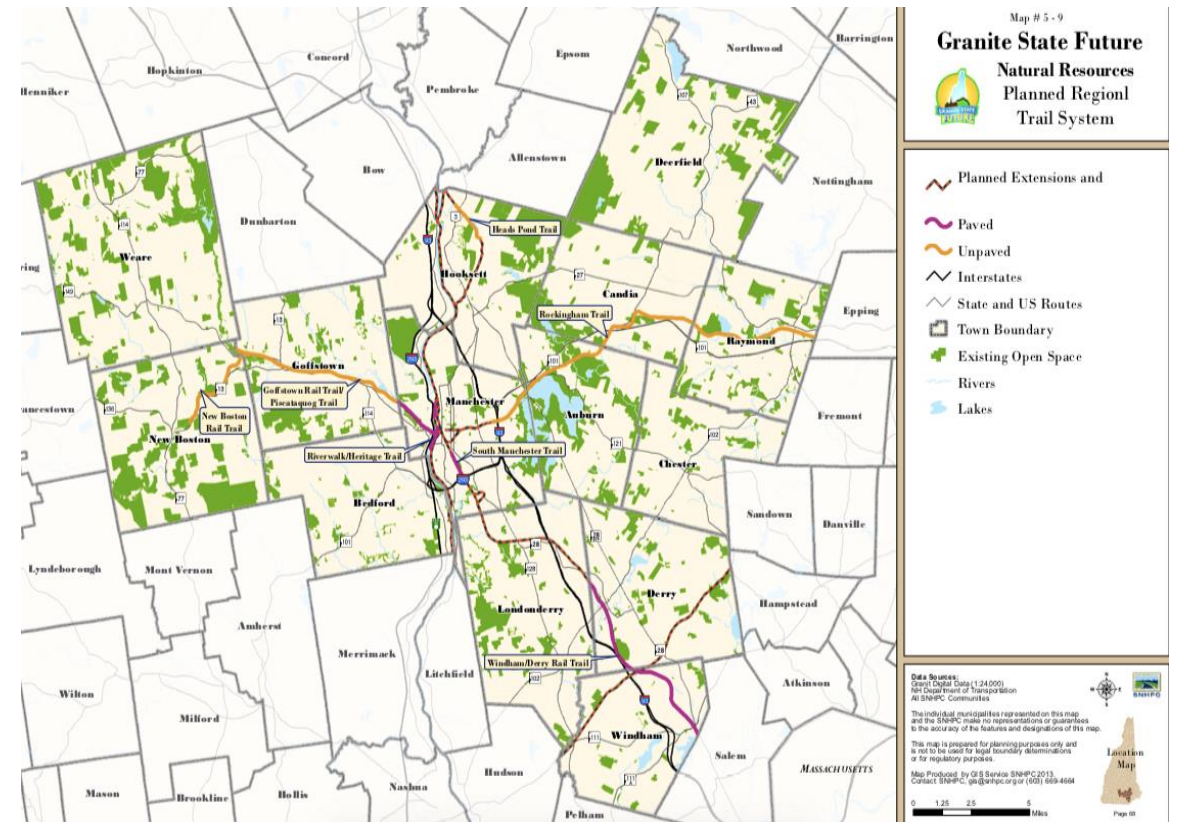
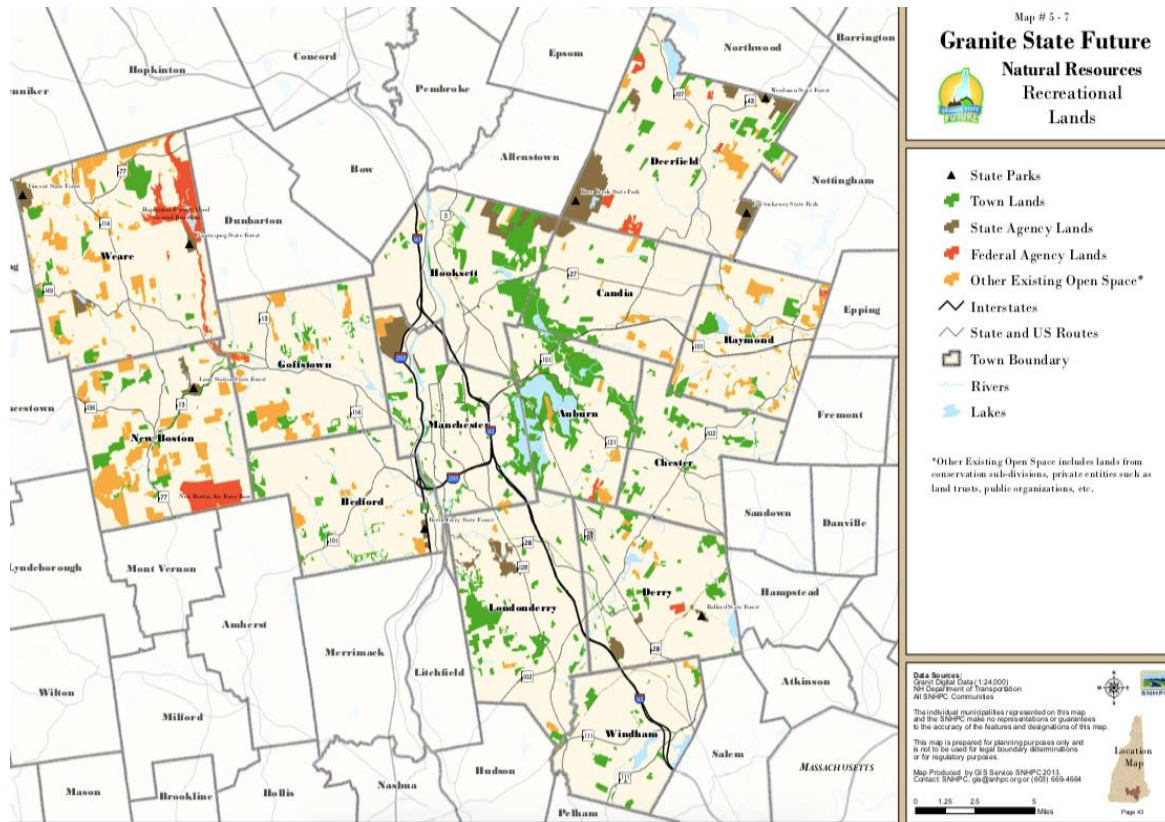
Physical Infrastructure - Central NH RPC



<https://cnhrpc.org//wp-content/uploads/2016/04/CNHRPC-Chapter-1-Regional-Story-FINAL-4-11-16.pdf>



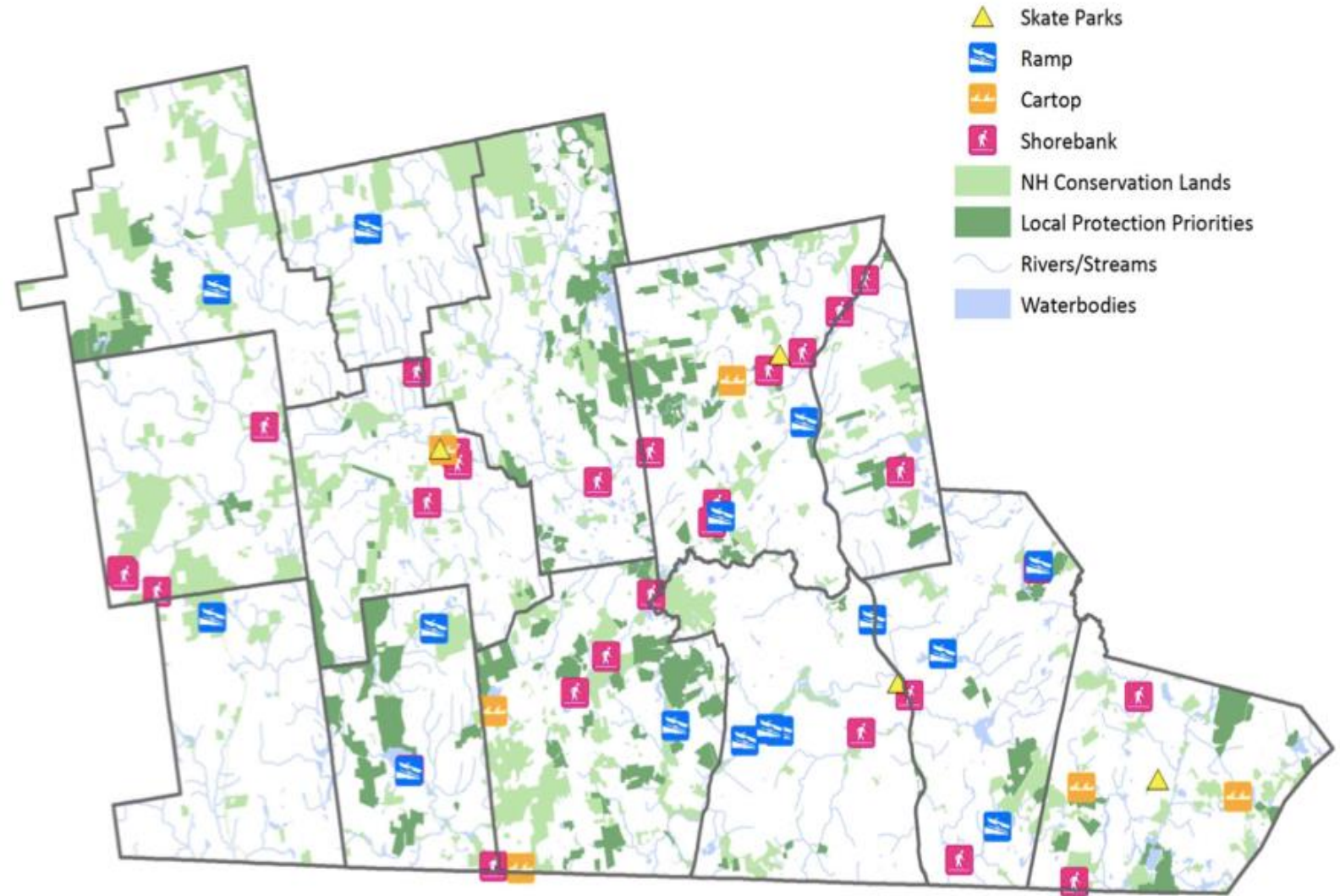
Physical Infrastructure - Southern NH RPC



https://www.snhpc.org/sites/g/files/vyhlf5006/f/uploads/southern_new_hampshire_regional_comprehensive_plan_2015.pdf



Physical Infrastructure Nashua RPC



https://www.nashuarpc.org/files/3914/5209/9306/05_Environment_Final_Adopted_121714.pdf



Physical Infrastructure - Rockingham RPC



http://www.therpc.org/application/files/8214/6100/8519/8_RMPNaturalResources_Maps.pdf



Physical Infrastructure - Strafford RPC

<https://srpc.maps.arcgis.com/apps/MapSeries/index.html?appid=546dbf4d8f7f4d5cbd1a628dd931a46a>

Promoting Outdoor Play
Get outside and have fun!

About Playgrounds Parks Trails & Open Space Sports Beaches & Pools Boats & Small Watercraft Ice Skating & Sledding Other All Recreation Sites

All Recreation Sites

Recreation Sites



Social Service Infrastructure – Regional Public Health Networks

“The 13 Regional Public Health Networks (RPHNs) integrate public health initiatives and services into one common network statewide.”

<https://www.dhhs.nh.gov/dphs/rphn/graphics/rphnmap-sm.jpg>
<https://nhphn.org/who-we-are/>

NEW HAMPSHIRE REGIONAL PUBLIC HEALTH NETWORKS

- North Country
- Upper Valley
- Central NH
- Carroll County
- Greater Sullivan County
- Winnepesaukee
- Strafford County
- Capital Area
- Greater Manchester
- Seacoast
- Greater Monadnock
- Greater Nashua
- South Central



THESE REGIONS ARE USED FOR PUBLIC HEALTH PLANNING AND THE DELIVERY OF SELECT PUBLIC HEALTH SERVICES.



Social Service Infrastructure – Area Agency System

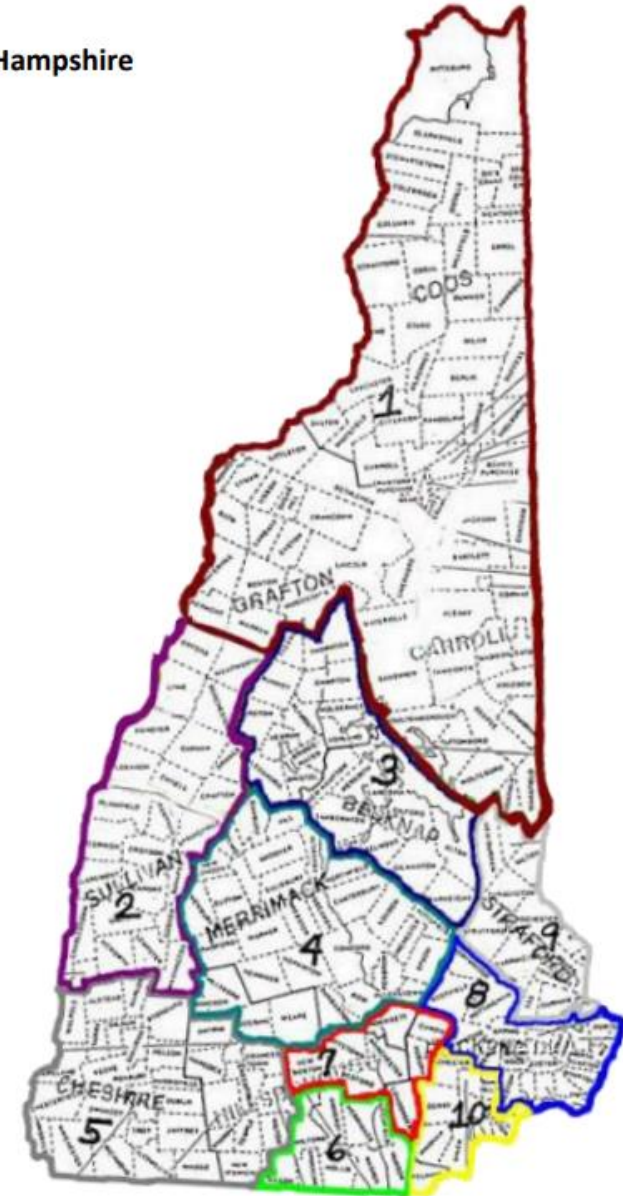
“These agencies are committed to strengthening and supporting individuals and families within the context of their lives and within their own communities.”

<https://www.dhhs.nh.gov/dcbcs/bds/agencies.htm>

<https://csni.org/>

Area Agencies in New Hampshire

	Region 1 Northern Human Services
	Region 2 PathWays of the River Valley
	Region 3 Lakes Region Community Services
	Region 4 Community Bridges
	Region 5 Monadnock Developmental Services, Inc.
	Region 6 Gateways Community Services
	Region 7 The Moore Center
	Region 8 One Sky Community Services, Inc.
	Region 9 Community Partners
	Region 10 Community Crossroads





Social Service Infrastructure - Doorways

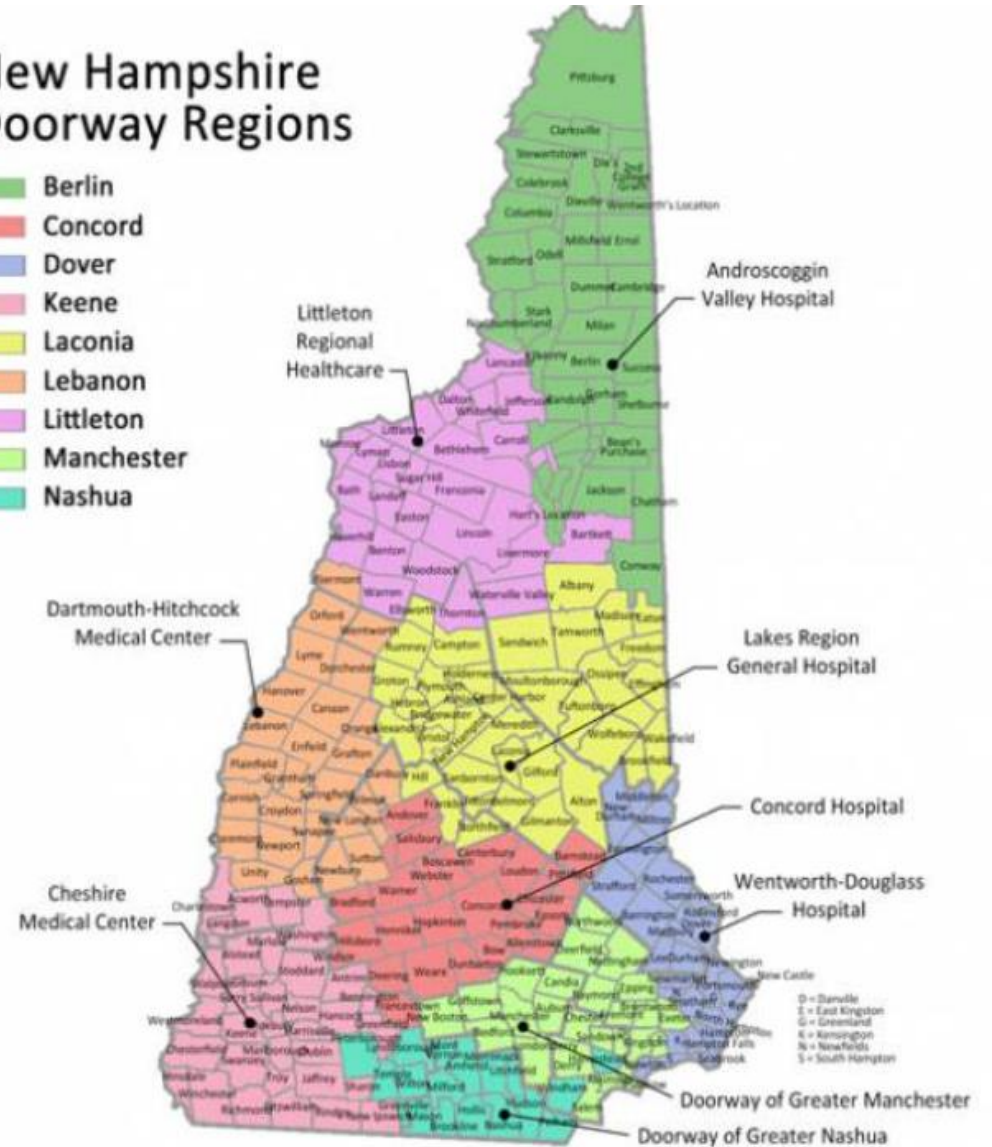
“The Doorway will connect you to the supports and services and the level of care that’s right for you, including:

- Screening and evaluation
- Treatment, including Medication Assisted Treatment
- Prevention, including naloxone
- Supports and services to assist in long-term recovery
- Peer recovery support services”

<https://www.thedoorway.nh.gov/>

New Hampshire Doorway Regions

- Berlin
- Concord
- Dover
- Keene
- Laconia
- Lebanon
- Littleton
- Manchester
- Nashua





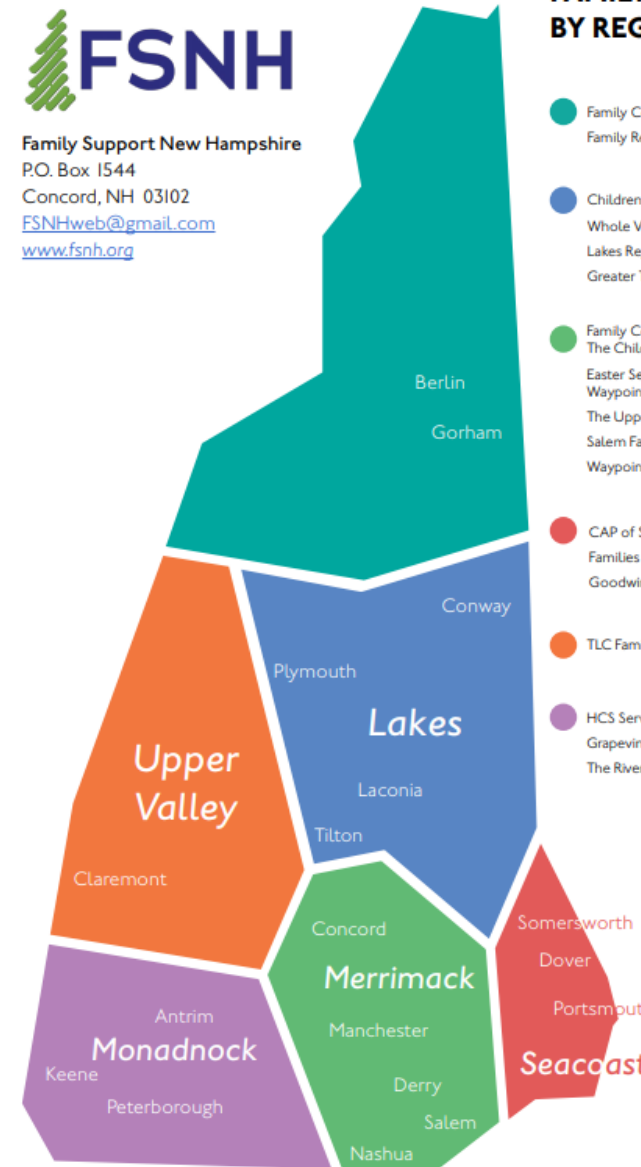
Social Service Infrastructure - Family Resource Centers

“The Family Resource Centers (FRCs) aim to strengthen families by providing support and education, such as parenting classes, play groups, after school assistance, and other programs.”

https://48eb1361-1c4e-4223-93cd-676c4536510e.filesusr.com/ugd/38c037_34124b0ea26643cebb13c5dd18334221.pdf



Family Support New Hampshire
P.O. Box 1544
Concord, NH 03102
FSNHweb@gmail.com
www.fsnh.org



NEW HAMPSHIRE FAMILY RESOURCE CENTERS BY REGION

- Teal:** Family Connections Center—Berlin
Family Resource Center—Gorham
- Blue:** Children Unlimited Inc.—Conway
Whole Village Family Resource Center—Plymouth
Lakes Region Community Services—Laconia
Greater Tilton Area Family Resource Center—Tilton
- Green:** Family Connections Center—Concord
The Children's Place and Parent Education Center—Concord
Easter Seals Child Development and FRC—Manchester
Waypoint—Manchester
The Upper Room—Derry
Salem Family Resources - Success by Six—Salem
Waypoint—Nashua
- Red:** CAP of Strafford County—Dover
Families First—Portsmouth
Goodwin Community Health—Somersworth
- Orange:** TLC Family Resource Center—Claremont
- Purple:** HCS Services—Keene
Grapevine Family & Community Resource Center—Antrim
The River Center—Peterborough

New Hampshire Children's Trust
(603) 224-1279
info@nhchildrenstrust.org
www.nhchildrenstrust.org

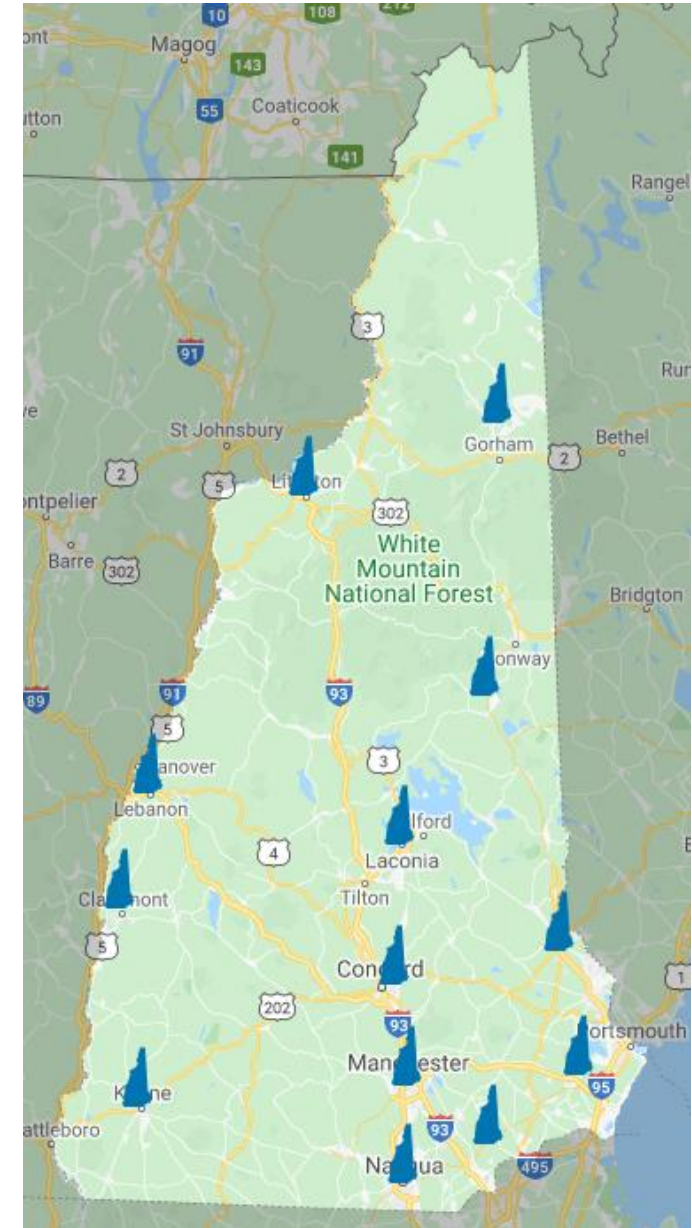




Social Service Infrastructure - ServiceLink Resource Centers

“As an Aging and Disability Resource Center and NHCarePath Partner, the New Hampshire Department of Health and Human Services's ServiceLink program strives to be visible, accessible and welcoming places where people can come for information and assistance.”

<https://www.servicelink.nh.gov/>

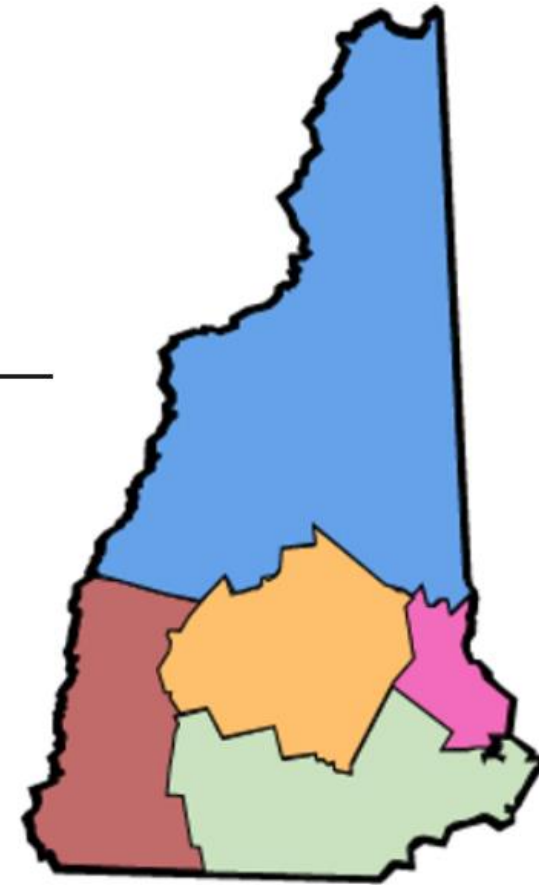




Social Service Infrastructure - Community Action Agencies

The Community Action Agencies aim to strengthen communities through appropriate resources including rental assistance, affordable childcare, emergency food programs, weatherization, housing assistance, and energy assistance.

<https://www.capnh.org/home>



**Southwestern
Community
Services**

Visit Site

**Tri-County
Community
Action Program**

Visit Site

**Southern
New Hampshire
Services**

Visit Site

**Community
Action Program
of Merrimack &
Belknap Counties**

Visit Site

**Community
Action
Partnership of
Strafford County**

Visit Site

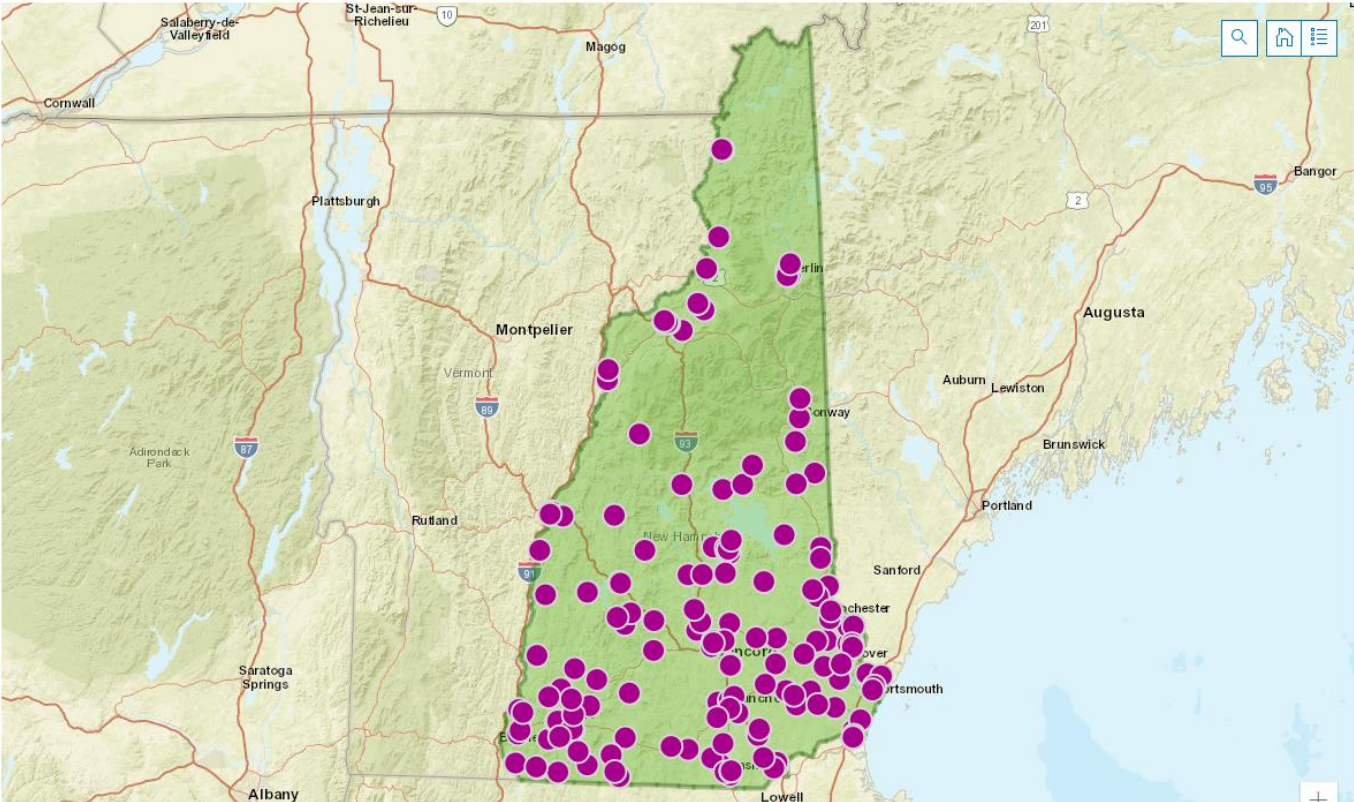


Social Service Infrastructure - Food Insecurity Resources

FOOD ACCESS | New Hampshire Food Access Map Find Local Food in New Hampshire

WELCOME ABOUT THIS MAP **DIRECTORY** PANTRIES / MEALS LOCAL FOOD DISCOUNTS / BENEFITS NUTRITION ASSISTANCE SUMMER MEALS GIVE / DONATE QUESTIONS?

TYPE OF SITE ALL LOCAL FOOD DISCOUNTS **PANTRIES / MEALS** WIC / SENIOR FOODS (CSFP) STATE ALL NH VT ME NH COUNTY ALL Belknap Carroll Cheshire Coos Grafton Hillsborough Merrimack Rockingham Strafford Sullivan



CLICK ON BUTTONS ABOVE to control sites displayed on MAP and LIST
ZOOM AND PAN ON THE MAP to control sites shown on LIST

Agape Ministries Servants Inc. Food Pantry
 80 Bean Road, Moultonborough, NH 03254
 hours: Mon, Wed, Fri, Sat: 9am-12pm
 phone: 603-677-6826
 web:

- Delivery: NO
- SNAP/EBT Discount:
- Veterans Discount:

All Saints' Community Food Cupboard
 35 School Street, Littleton, NH 03561 - Community Center parking lot entrance
 hours: Tue, Thu, Sun: 9am-10am
 phone: 603-444-3414
 web:

- Delivery: NO
- SNAP/EBT Discount:
- Veterans Discount:

Antrim Bennington Food Pantry
 85 Main St, Antrim, NH 03440
 hours: Sat, 10am-12pm
 phone: 603-588-6614
 web: <http://www.antrimbaptist.org/food-pantry.html>

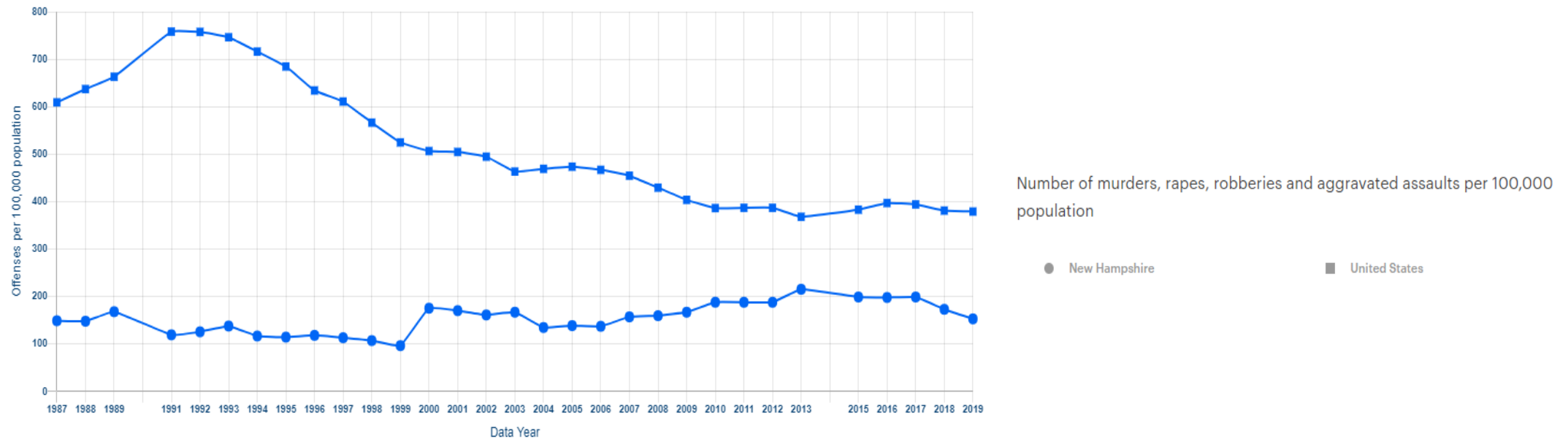
- Delivery: NO

<https://unhcoopext.maps.arcgis.com/apps/MapSeries/index.html?appid=5caa235e0e024beb8bebba50a0297d15&entry=2>



Safety - Crime

Trend: Violent Crime, New Hampshire, United States



Source:

• U.S. Department of Justice, Federal Bureau of Investigation

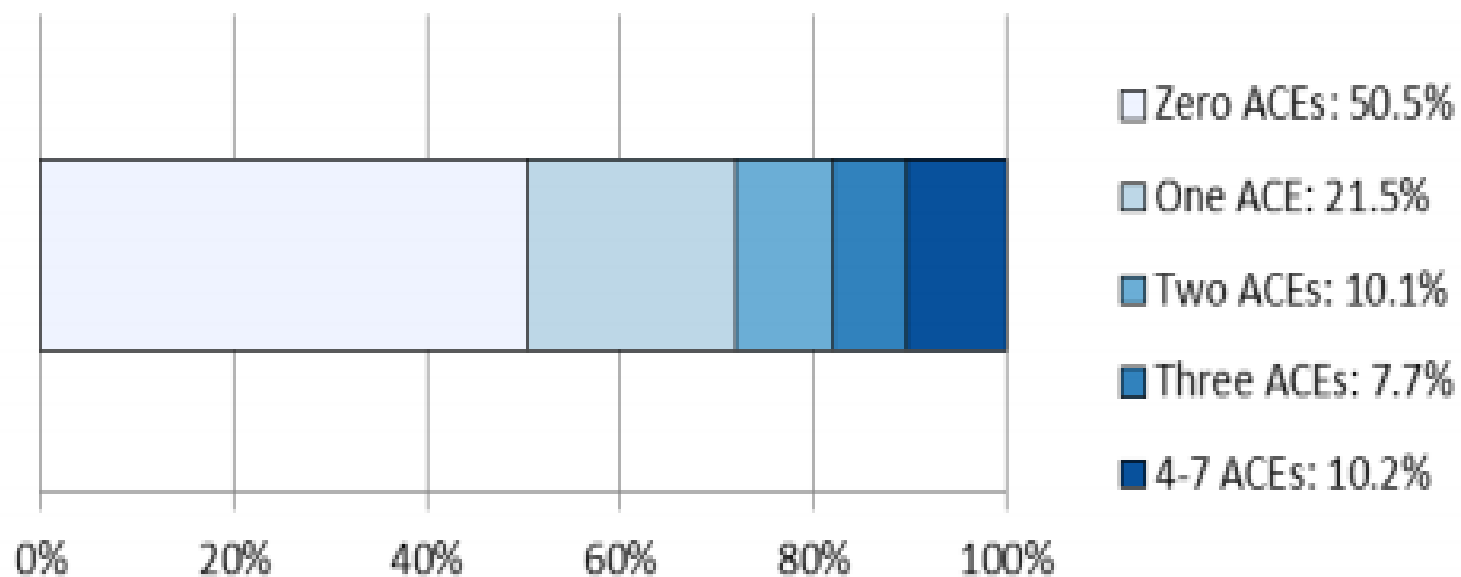
<https://www.americashealthrankings.org/explore/annual/measure/Crime/state/NH>

Safety - Adverse Childhood Events

Topic	Question detail
<ul style="list-style-type: none">• physical abuse	- was ever hit, beaten, kicked or physically hurt by a parent or adult in the home
<ul style="list-style-type: none">• sexual abuse	- was ever touched sexually by an adult or someone at least five years older
<ul style="list-style-type: none">• household substance abuse	- lived with someone who was a problem drinker or alcoholic - lived with someone who used illegal street drugs or who abused prescription medications
<ul style="list-style-type: none">• household mental illness	- lived with someone who was depressed, mentally ill, or suicidal
<ul style="list-style-type: none">• intimate partner violence	- parents or adults in the home ever slapped, hit, kicked, punched or beat each other up
<ul style="list-style-type: none">• incarceration of a household member	- lived with someone who served time or was sentenced to serve time in a prison, jail, or other correctional facility

Safety - Adverse Childhood Events

Percentage of NH population reporting ACEs
NH BRFSS 2016

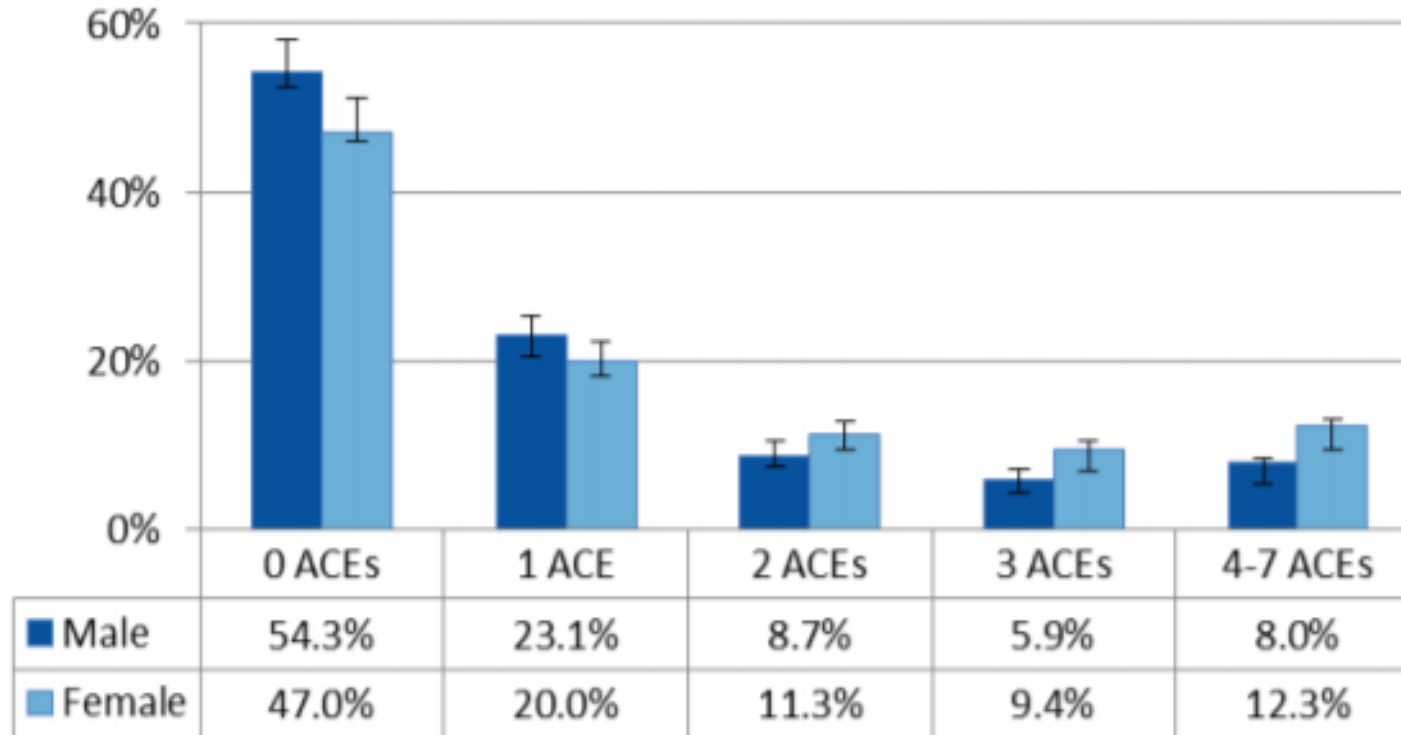




Safety - Adverse Childhood Events

Gender and ACE scores

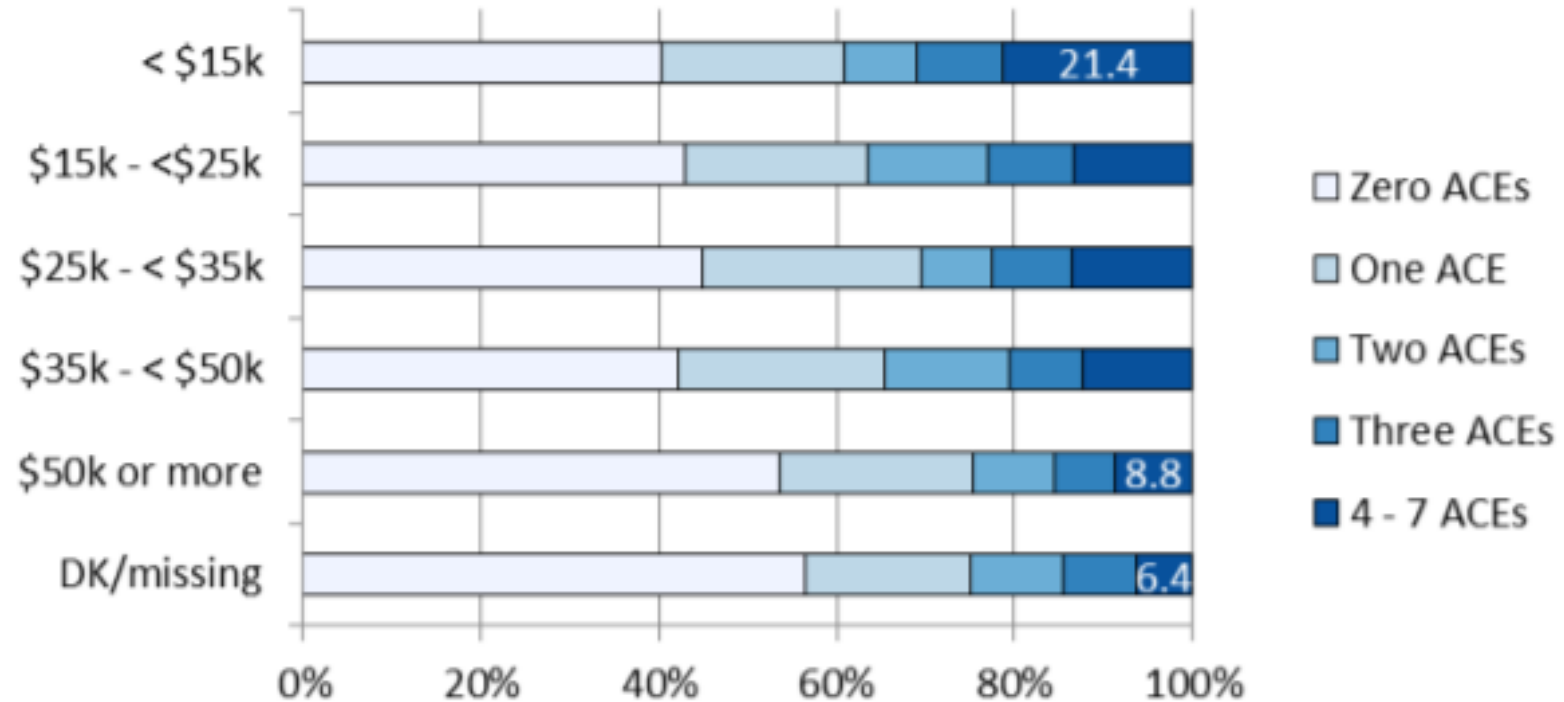
NH BRFSS 2016





Safety - Adverse Childhood Events

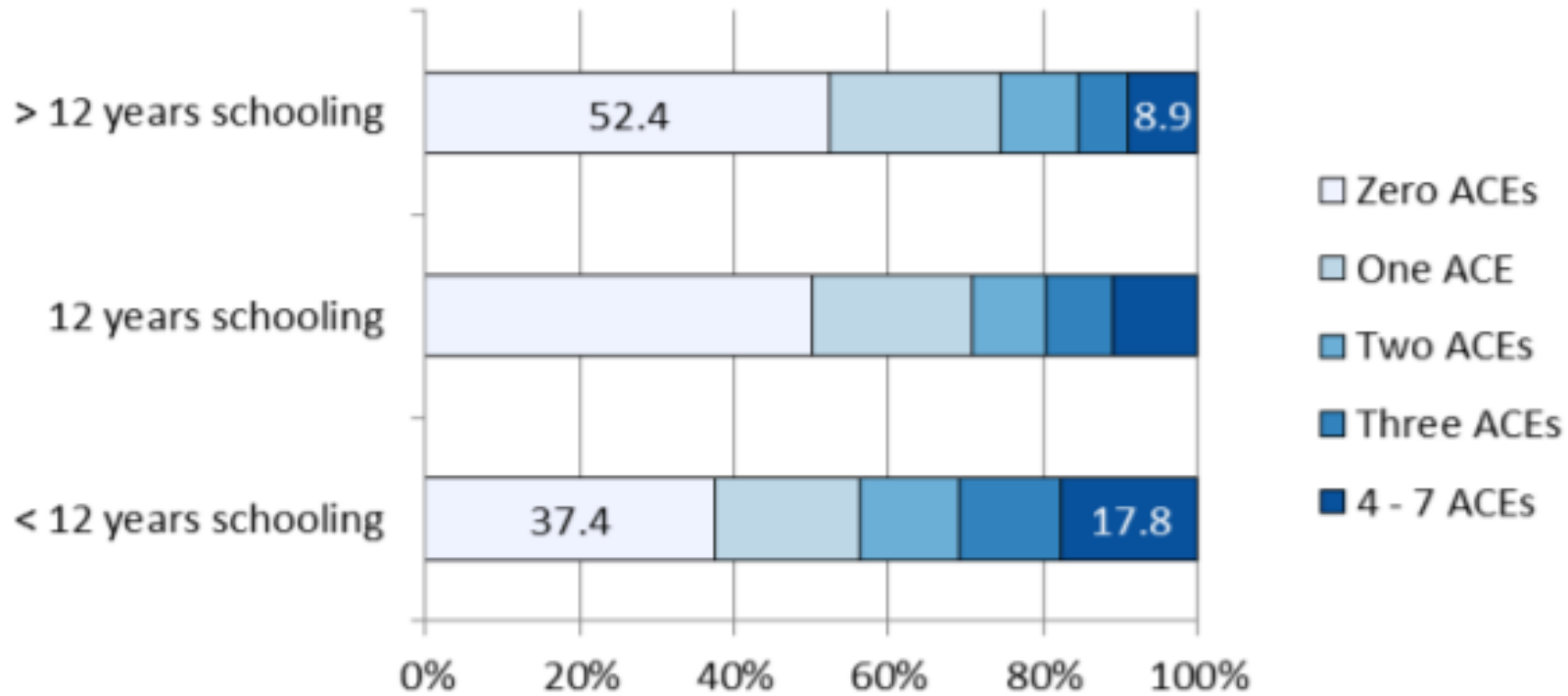
Income groups and ACE scores
NH BRFSS 2016





Safety - Adverse Childhood Events

Educational attainment and ACE scores
NH BRFSS 2016





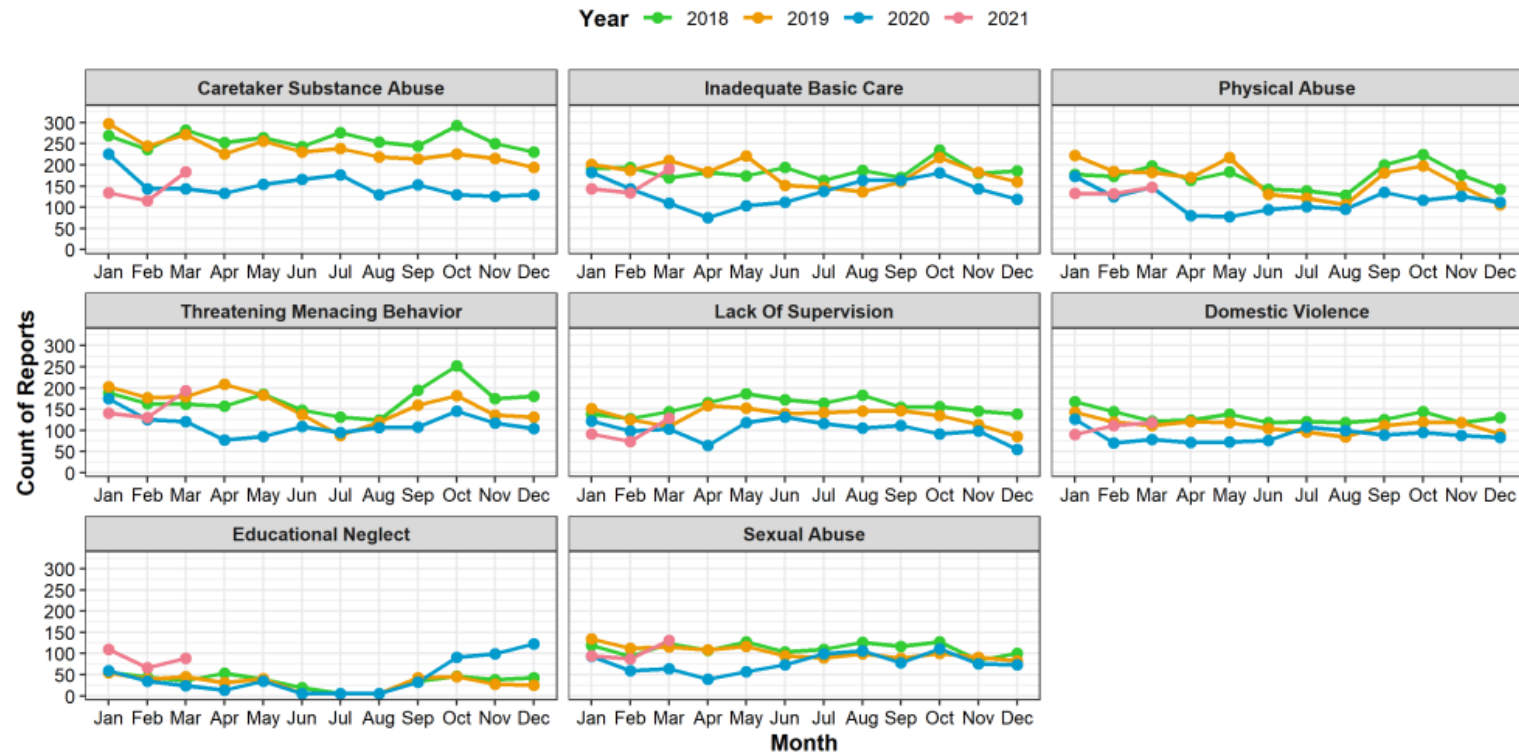
Safety - Childhood Protection, COVID Impact

Child Protection Intake- Allegation Types in Referrals

5

Child Protection: Trends in Allegations

Comparing 2018 - 2021 | Count of Screen Ins With at Least One Occurrence of Allegation



NH Department of Health & Human Services | Division for Children, Youth & Families

Extracted from Bridges (NH SACWIS) on 04/07/2021





Environment – Air Quality

Figure 4.12: Winter Air Quality Ratings by County, 2014-2016 (Percent of Days)

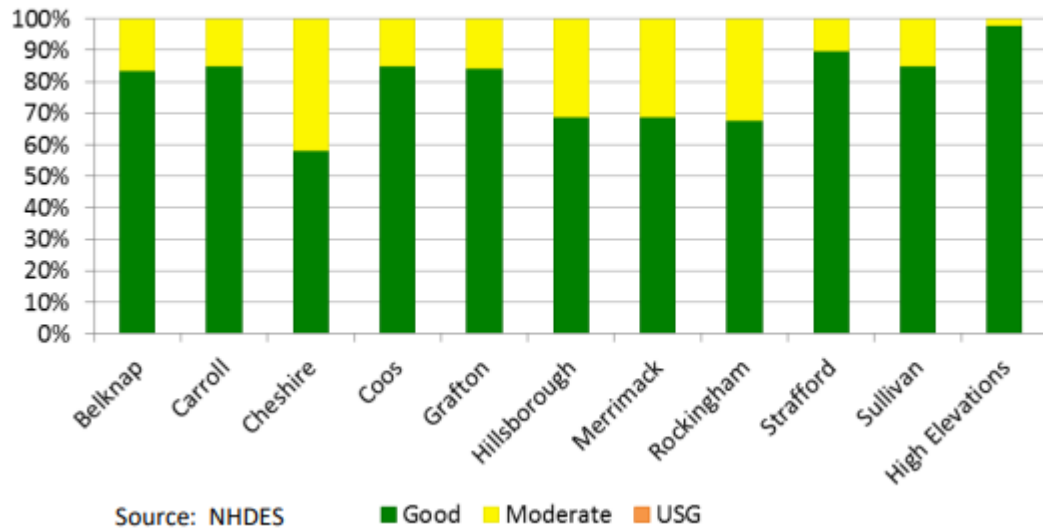
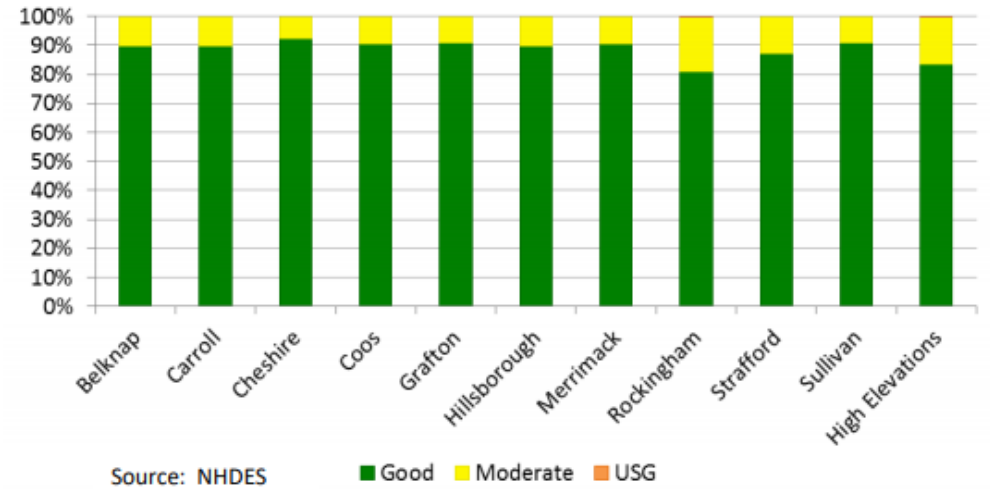


Figure 4.13: Summer Air Quality Ratings by County, 2014-2016 (Percent of Days)



Key Point: New Hampshire air quality reaches the air quality index of unhealthy for sensitive groups only a few days per year. The highest AQI tends to occur most often in the southern counties because these areas are the most populated and closest to out-of-state emission sources.

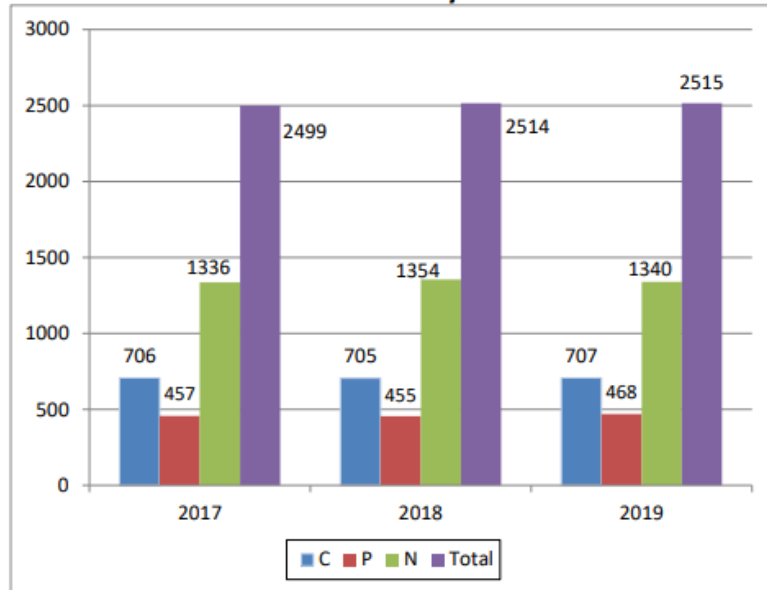
<https://www.des.nh.gov/sites/g/files/ehbemt341/files/documents/2020-01/r-ard-17-01.pdf>



Environment - Water Quality

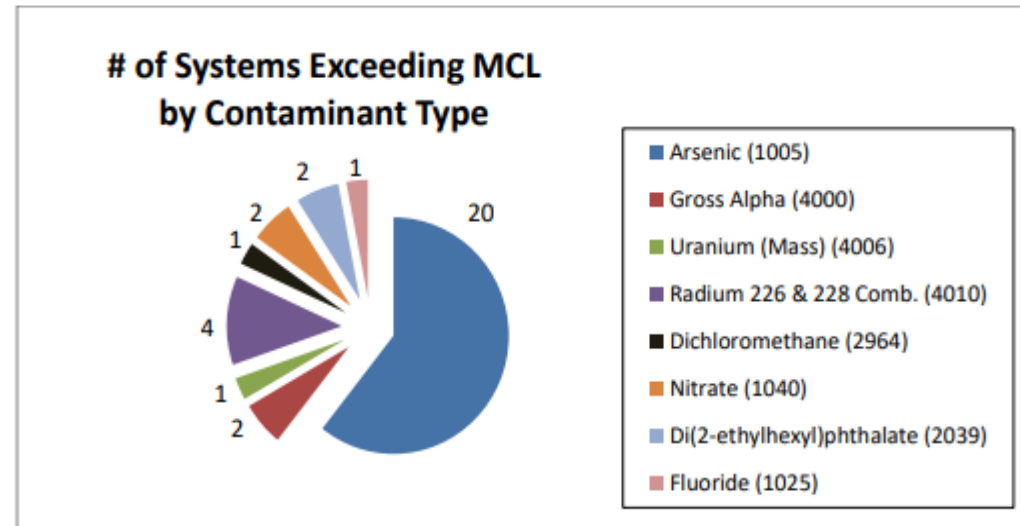
Public Water Systems

Active Public Water Systems in NH



In 2019, 33 public water systems incurred 41 MCL violations (Violation Codes 01 and 02) for regulated chemical contaminants. Numbers in this report may not match the Appendices because a water system may have incurred multiple violations for any given contaminant or violation type.

of Systems Exceeding MCL by Contaminant Type



<https://www.des.nh.gov/sites/g/files/ehbemt341/files/documents/r-wd-20-09.pdf>



Environment - Water Quality

- Well Water accounts for over 40%.
- New well water reporting for state

Source: Rates of Arsenic Exceedance in Residential Wells by New Hampshire State Senate District.

NH EPHT Program, Division of Public Health Services, NH DHHS

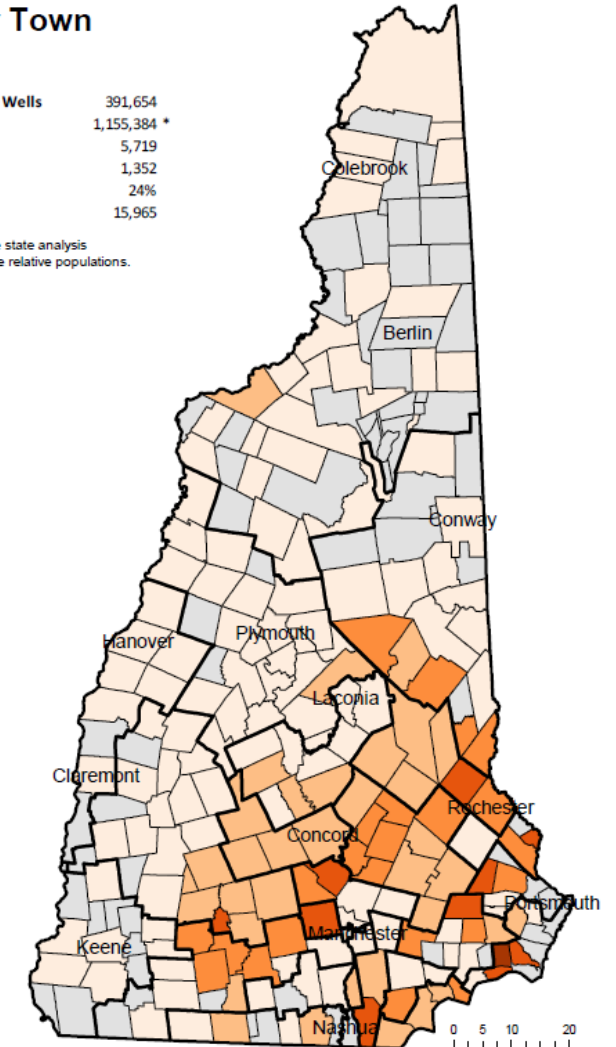
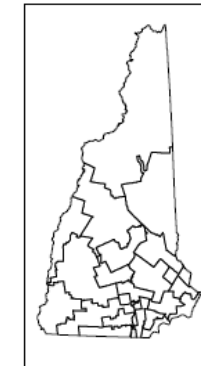
New Hampshire Rates of Arsenic Exceedance in Residential Wells by Town (2014-2018)

Estimated Population Served by Residential Wells	391,654
Estimated State Population	1,155,384 *
Number of Well Water Samples	5,719
Number of Exceedances (Arsenic > 5 ppb)	1,352
Percent Exceedances > 5 ppb	24%
Estimated Children Exposed < 6 years of age	15,965

* Manchester and Nashua are excluded from the state analysis due to the low number of well samples and large relative populations.

Percent Exceedance > 5 ppb

0 - 20%
21 - 40%
41 - 60%
61 - 80%
81 - 100%
Too Few Samples



Data note: Well water data is from the NH Department of Environmental Services (NHDES) and NH Public Health Laboratories (NHPHL). Years: 2014 - 2018. Population data is from NH Department of Public Health Services (2018). Samples were limited to residential wells and duplicate wells were not included. If wells were tested multiple times, the highest concentration sample was used. Previous arsenic treatment was not taken into account. Towns with less than 6 samples were suppressed.

NHDES recommends standard and radiological analysis testing every three to five years.



Environmental Exposures – Radon (1998-2011)

Location	Number of tests	Number of elevated tests	% elevated	Median of all tests (pCi/L)	Median of elevated tests (pCi/L)
Belknap	1,066	166	16%	1.4	6.0
Carroll	1,418	586	41%	3.0	8.9
Cheshire	1,349	204	15%	1.3	6.4
Coos	1,487	585	39%	2.9	9.8
Grafton	2,406	521	22%	1.9	6.7
Hillsborough	2,810	631	22%	1.8	7.1
Merrimack	5,421	1,727	32%	2.4	7.2
Rockingham	5,660	2,026	36%	2.7	7.3
Strafford	2,347	960	41%	3.0	7.7
Sullivan	975	114	12%	1.3	5.9
Nashua city	259	90	35%	2.7	7.5
Manchester city	278	85	31%	2.5	7.6

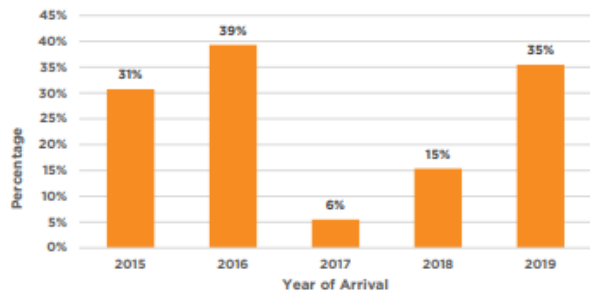
Elevated tests are defined as those greater than the EPA recommended level (4.0 pCi/L).

<https://www.nh.gov/epht/environmental-topics/documents/radon.pdf>



Environmental Exposures - Childhood Lead Levels

Figure 11: Percentage of newly arrived refugees 0 - 72 months with an elevated blood lead level of 5 µg/dL or higher within 3 months of arrival.

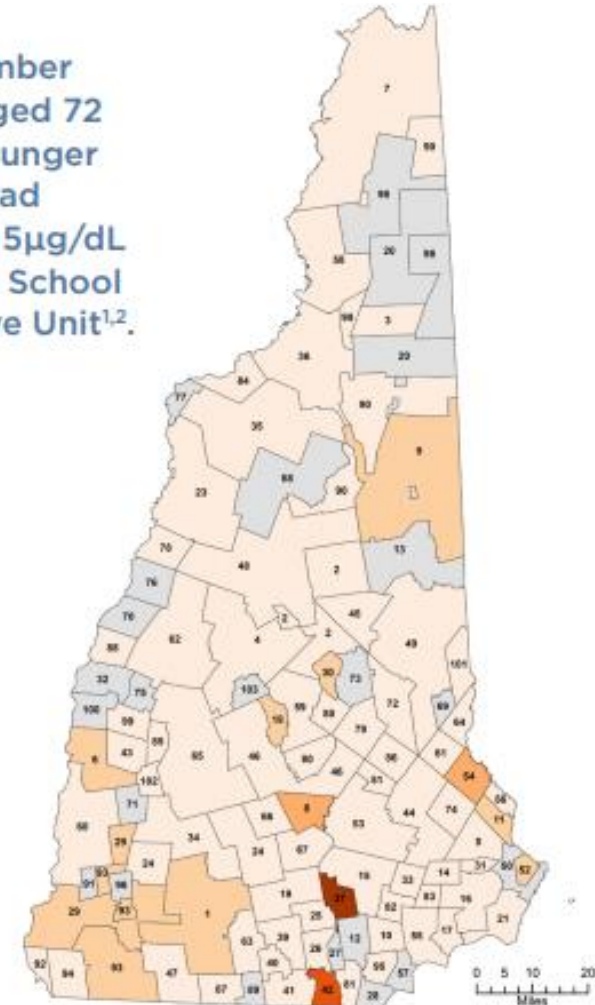
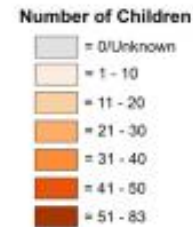


35%
11 OUT OF 31



In 2019, 35% (11 out of 31) of children newly arrived refugees in NH tested for blood lead within 3 months of arrival had a blood lead level of 5ug/dL or higher. This compares to an estimated 22.7% of newly arrived refugees in US with an elevated blood lead level of 5ug/dL or higher within 3 months of arrival.

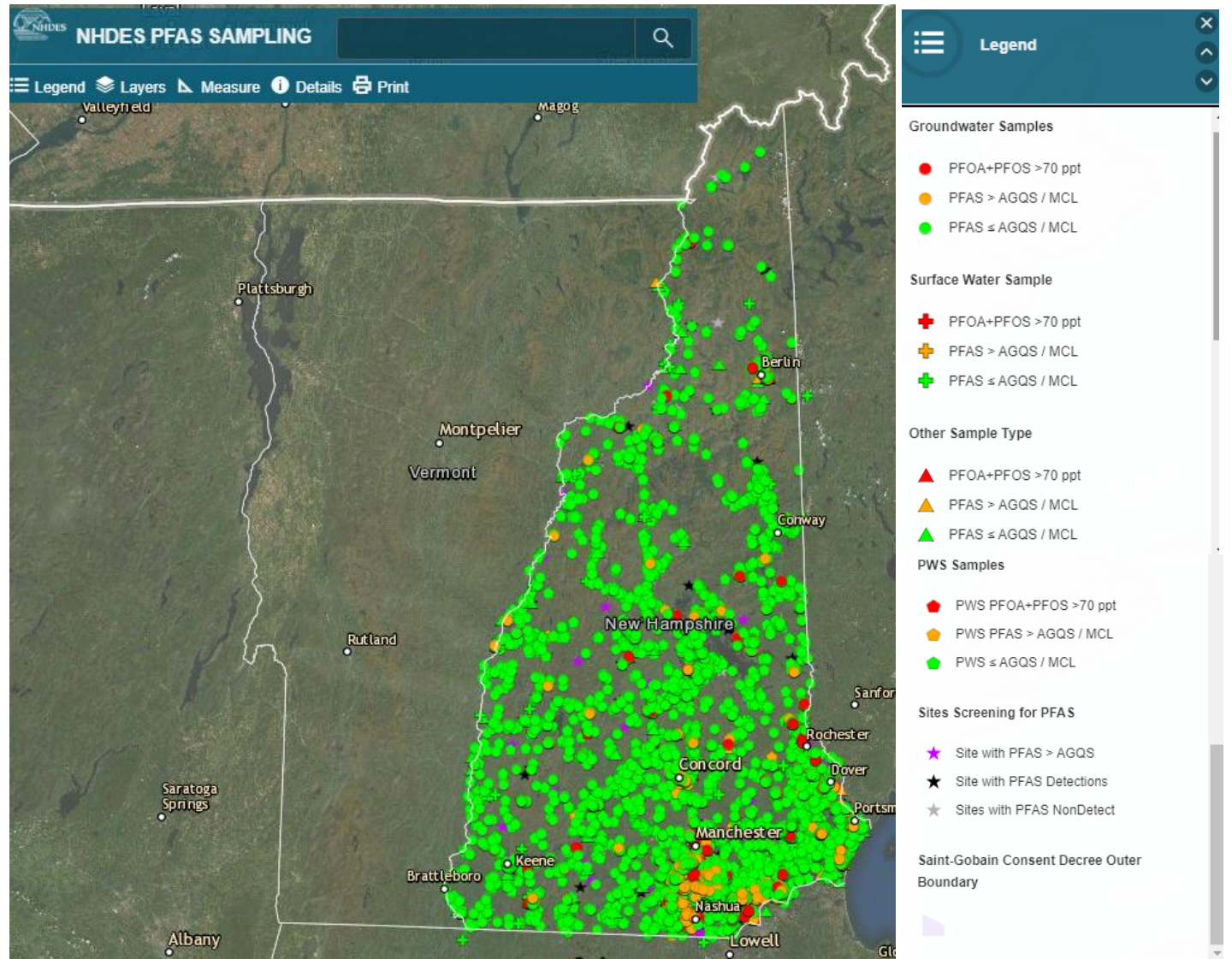
Figure 6: Number of children aged 72 months or younger with blood lead elevations of 5µg/dL or greater by School Administrative Unit^{1,2}.



<https://leadfreekidsnh.org/wp-content/uploads/2021/01/2019-lead-exposure-nh-data-brief.pdf> -



Environmental Exposures – PFAS (Per- and Polyfluoroalkyl Substances)



<https://nhdes.maps.arcgis.com/apps/View/index.html?appid=66770bef141c43a98a445c54a17720e2&extent=-73.5743,42.5413,-69.6852,45.4489>



Transportation – Commuting Patterns

Location	Drove alone	Carpooled	Public transportation (including taxicab)	Walked	Other means	Worked from home	Mean travel time to work (in minutes)
New Hampshire	80.6%	7.9%	0.9%	2.7%	1.3%	6.6%	27.5
Belknap	80.1%	9.5%	0.2%	2.4%	1.9%	5.9%	25.8
Carroll	80.8%	9.1%	0.1%	2.2%	0.9%	7.0%	26.7
Cheshire	76.9%	8.2%	0.3%	3.2%	2.0%	9.5%	23.2
Coos	76.3%	10.9%	0.2%	2.4%	2.8%	7.4%	21.4
Grafton	74.3%	9.1%	1.2%	6.6%	3.0%	5.7%	23.6
Hillsborough	81.4%	8.1%	1.0%	2.1%	1.0%	6.4%	28.3
Merrimack	80.9%	7.9%	0.2%	2.5%	1.3%	7.1%	27.1
Rockingham	82.8%	6.1%	0.9%	1.9%	1.0%	7.3%	30.4
Strafford	79.0%	8.5%	1.8%	4.3%	1.6%	4.8%	26.4
Sullivan	82.4%	9.7%	0.3%	2.3%	0.4%	4.9%	24.5

2019: ACS 5-Year Estimates Data <https://www.census.gov/acs/www/data/data-tables-and-tools/data-profiles/>
Economic Characteristics



Transportation – Commuting Time

Location	Commute time 35-60 minutes	Commute time more than 60 minutes
NEW HAMPSHIRE	16.0%	10.0%
Belknap County	16.0%	7.9%
Carroll County	15.1%	11.2%
Cheshire County	10.1%	7.5%
Coos County	10.9%	6.3%
Grafton County	11.7%	5.7%
Hillsborough County	16.3%	11.2%
Merrimack County	16.0%	8.6%
Rockingham County	19.2%	12.5%
Strafford County	15.3%	8.8%
Sullivan County	16.7%	4.3%
Nashua city	15.9%	9.2%
Manchester city	11.0%	8.0%

NH WISDOM Dashboard, 2014-2018

https://dashboard.nh.gov/t/DHHS/views/SocialDeterminantsofHealthLandingPage/SocialDeterminantsOfHealthLandingPage?:linktarget=_self&:embed=yes Housing and Transportation



Teleworking during COVID-19

Month	Some adult in household substituted some or all of their typical in-person work for telework because of the coronavirus pandemic
April 2021	31.1%
March 2021	41.6%
February 2021	42.2%
January 2021	39.9%
December 2020	41.8%
November 2020	38.8%
October 2020	40.8%
September 2020	37.2%
August 2020	39.5%

<https://www.census.gov/programs-surveys/household-pulse-survey/data.html>

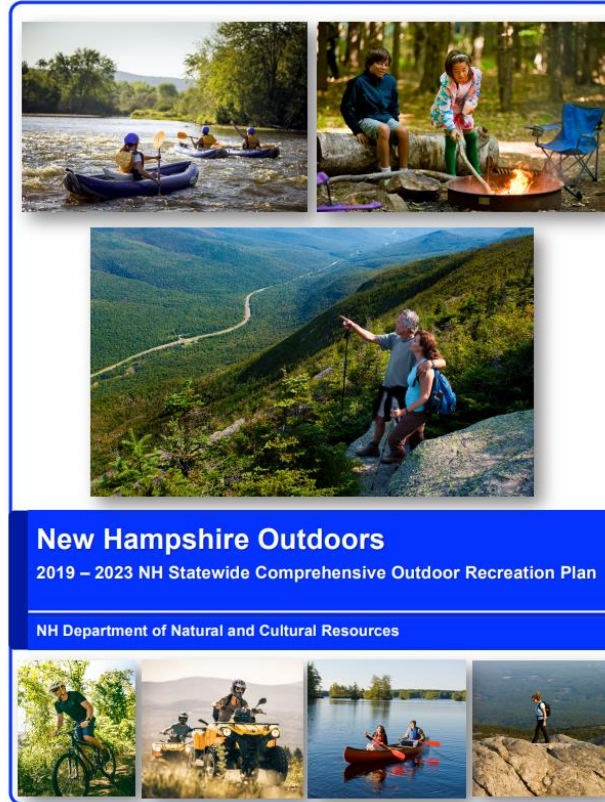
Community – Major Themes

- Need for services varies by geography and demographic groups.
- NH's geography allows for natural recreational space.
- NH has many social service agencies, spanning all regions of the state, focusing on specific topics. Regional approach with varying geographies covered.
- Environmental exposures exist, and some are related to land type and use.
- Public transportation is minimal.

What do we need to know but don't yet?

- What are the variations in the access and ability to use the natural recreation resources?
- Are there gaps in social service infrastructure?
- Hyperlocal measures of safety
- How do the environmental factors and interact?
- How does air quality differ at hyperlocal levels?
- Will the commuting patterns continue to change, and what will that mean for NH?

What plans does NH have to address these issues?



New Hampshire Outdoors
2019 – 2023 NH Statewide Comprehensive Outdoor Recreation Plan

NH Department of Natural and Cultural Resources

<https://www.nhstateparks.org/getmedia/43f2dddc-dfd5-475a-951b-3a61922d5c15/Community-Recreation-9-19-FINAL-SCORP.pdf>

TEN YEAR TRANSPORTATION IMPROVEMENT PLAN

2021 - 2030

Projects Only

APPROVED BY THE NH LEGISLATURE
AND SIGNED INTO LAW BY THE GOVERNOR
UNDER HB 1182, AS AMENDED

PURSUANT TO
RSA 228:99 AND RSA 240 OF THE LAWS OF NEW HAMPSHIRE



PROJECTS LISTED ALPHABETICALLY



PREPARED BY THE NEW HAMPSHIRE
DEPARTMENT OF TRANSPORTATION

July 24, 2020

<https://www.nh.gov/dot/media/video/ten-year-plan.htm>

What resources
are important
for the public to
know about to
address these
topics?

All the referenced
systems.

What else?



Public Comment



Next Steps

- Upcoming Meetings:
 - June 18
 - July 16